

WAAS CH 97509 W01B	APP CRS 011°	Rwy ldg 11497 TDZE 286 Apt Elev 312
--	------------------------	--

RNAV (GPS) Y RWY 1C

WASHINGTON DULLES INTL (IAD)

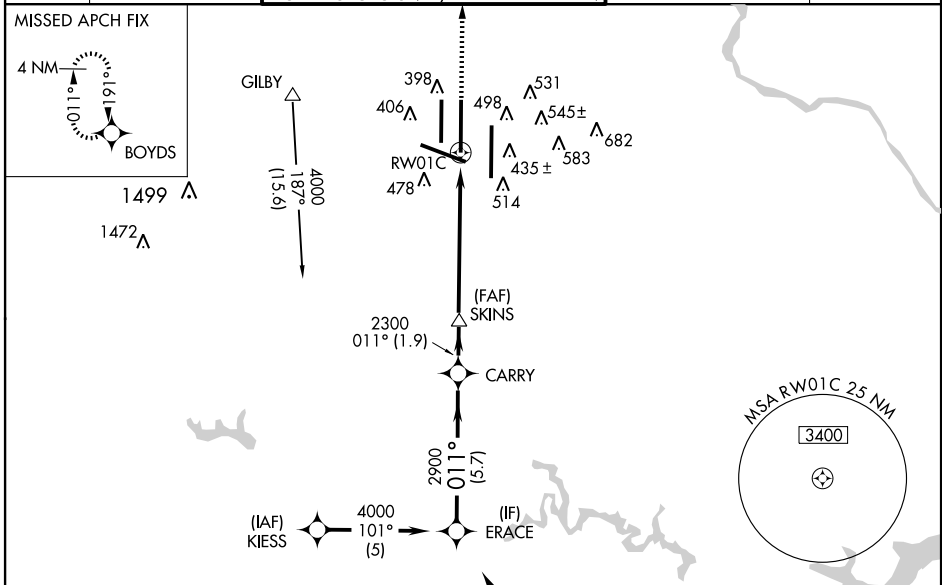
▼ For uncompensated Baro-VNAV systems, LNAV/VNAV NA below -15°C (5°F) or above 48°C (118°F). DME/DME RNP-0.3 NA. Simultaneous approach authorized with ILS or LOC/DME Rwy 1L, ILS Rwy 1L (Cat II), ILS Rwy 1L (Cat III), ILS or LOC Rwy 1R, ILS Rwy 1R (Cat II), ILS Rwy 1R (Cat III). LNAV procedure NA during simultaneous operations. Use of FD or AP providing RNAV track guidance required during simultaneous operations.

MALSR



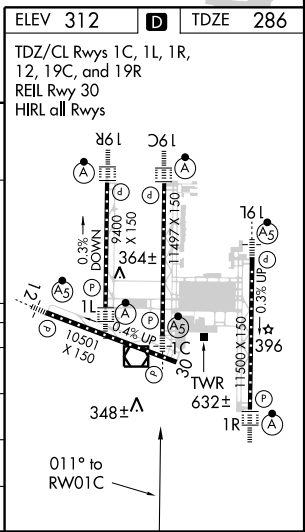
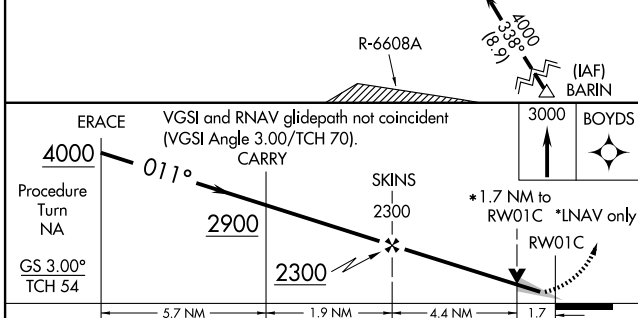
MISSED APPROACH:
Climb to 3000 direct
BOYDS and hold.

ATIS 134.85	POTOMAC APP CON 120.45 306.925	DULLES TOWER 120.1 317.8 (Rwy 1R/19L) 120.25 348.6 (Rwy 1C/19C) 134.425 348.6 (Rwys 1L/19R and 12/30)	GND CON 121.9 317.8 (EAST) 132.45 348.6 (WEST)	CLNC DEL 135.7 317.8
-----------------------	--	---	--	--------------------------------



NE-3, 31 MAY 2012 to 28 JUN 2012

NE-3, 31 MAY 2012 to 28 JUN 2012



CATEGORY	A	B	C	D
LPV DA		486/24	200 (200-½)	
LNAV/VNAV DA		785/60	499 (500-1¼)	
LNAV MDA	900/24	614 (600-½)	900/60 614 (600-1¼)	900-1½ 614 (600-1½)
CIRCLING	940-1	628 (700-1)	940-1¾ 628 (700-1¾)	940-2 628 (700-2)