

WAAS CH 63114 W18A	APP CRS 180°	Rwy ldg 4404 TDZE 985 Apt Elev 1002
--	------------------------	--

RNAV (GPS) RWY 18

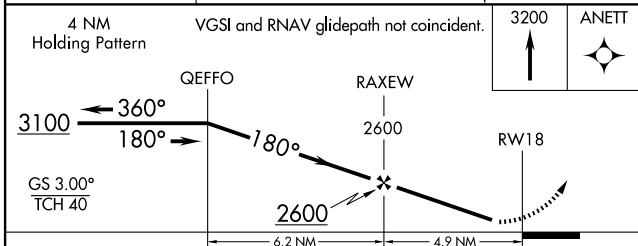
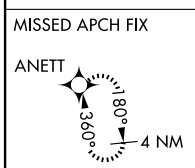
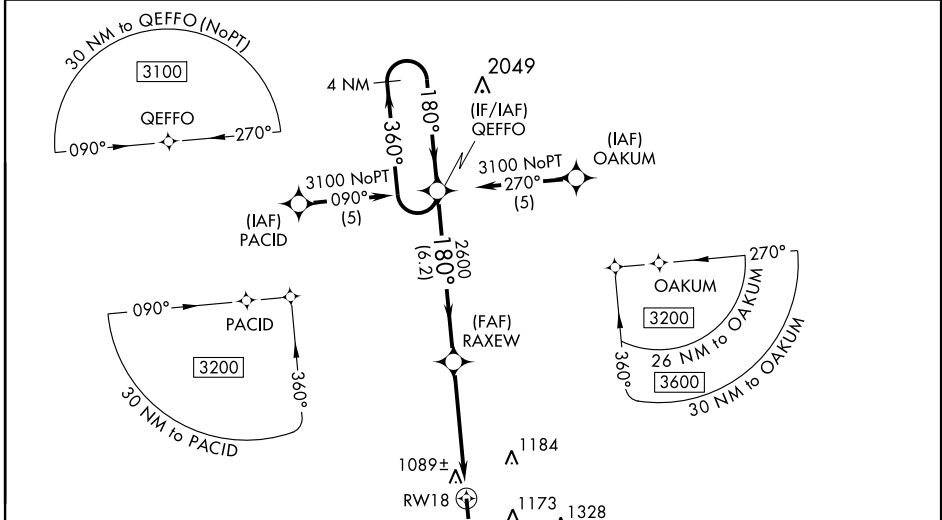
RICHMOND/MADISON (I39)

▽ DME/DME RNP-0.3 NA. Visibility reduction by helicopters NA. Baro-VNAV NA when using Lexington altimeter setting. When local altimeter setting not received use Lexington altimeter setting and increase all DA 67 feet and all MDA 80 feet; and increase LPV all Cats, LNAV/VNAV all Cats, and LNAV Cat C and D visibility ¼ mile. For uncompensated Baro-VNAV systems, LNAV/VNAV NA below -17°C (2°F) or above 46°C (114°F).

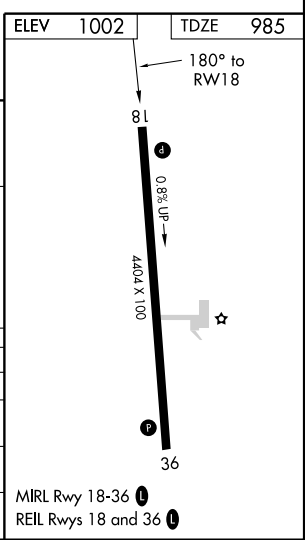
▲ NA

MISSED APPROACH: Climb to 3200 direct ANETT and hold.

AWOS-3 119.625	LEXINGTON APP CON 120.15 259.3	UNICOM 122.8 (CTAF) 0
--------------------------	--	---------------------------------



CATEGORY	A	B	C	D
LPV DA		1235-1	250 (300-1)	
LNAV/VNAV DA		1378-1½	393 (400-1½)	
LNAV MDA	1460-1	475 (500-1)	1460-1¼ 475 (500-1¼)	1460-1½ 475 (500-1½)
CIRCLING	1480-1	478 (500-1)	1480-1½ 478 (500-1½)	1560-2 558 (600-2)



SE-1, 31 MAY 2012 to 28 JUN 2012

SE-1, 31 MAY 2012 to 28 JUN 2012

WAAS CH 40218 W36A	APP CRS 360°	Rwy Idg 4404 TDZE 1002 Apt Elev 1002
--	------------------------	---

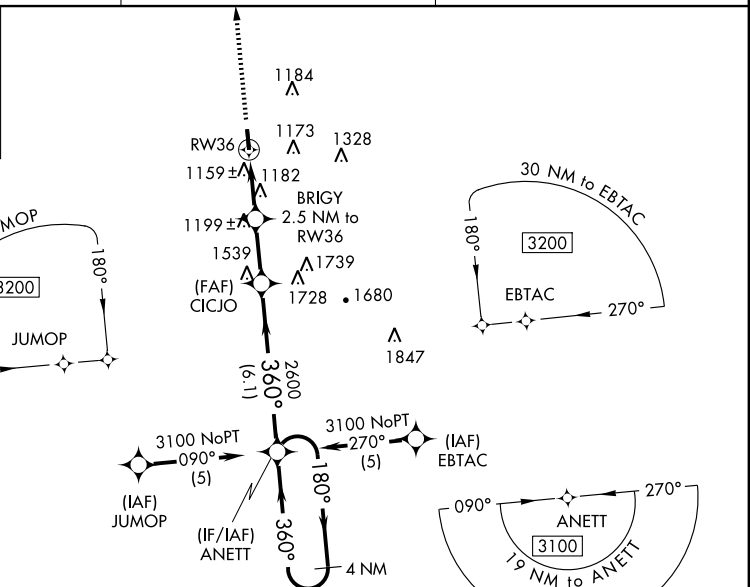
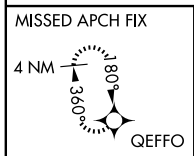
RNAV (GPS) RWY 36

RICHMOND/MADISON (I39)

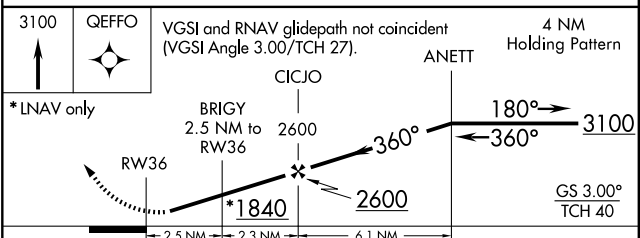
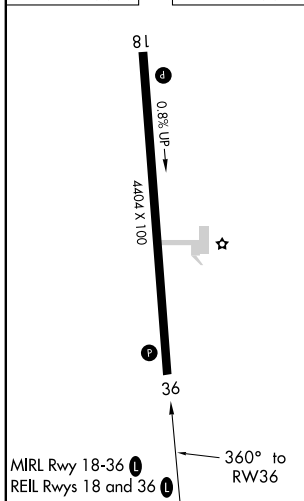
▽ DME/DME RNP-0.3 NA. Visibility reduction by helicopters NA. When local altimeter setting not received use Lexington altimeter setting and increase all DA 67 feet and all MDA 80 feet; increase LPV all Cats, LNAV/VNAV all Cats, and LNAV Cat C and D visibility ¼ mile. For uncompensated Baro-VNAV systems, LNAV/VNAV NA below -17°C (2°F) or above 46°C (114°F). Baro-VNAV NA when using Lexington altimeter setting.

△ NA MISSED APPROACH: Climb to 3100 direct QEFFO and hold.

AWOS-3 119.625	LEXINGTON APP CON 120.15 259.3	UNICOM 122.8 (CTAF)
--------------------------	--	-------------------------------



ELEV 1002	TDZE 1002
-----------	-----------



CATEGORY	A	B	C	D
LPV DA		1288-1	286 (300-1)	
LNAV/VNAV DA		1470-1¾	468 (500-1¾)	
LNAV MDA	1460-1	458 (500-1)	1460-1¼ 458 (500-1¼)	1460-1½ 458 (500-1½)
CIRCLING	1480-1	478 (500-1)	1480-1½ 478 (500-1½)	1560-2 558 (600-2)

RNAV (GPS) RWY 36

SE-1, 31 MAY 2012 to 28 JUN 2012

SE-1, 31 MAY 2012 to 28 JUN 2012

VORTAC HYK 112.6 Chan 73	APP CRS 161°	Rwy Idg TDZE Apt Elev	4404 985 1002
--	------------------------	-----------------------------	--

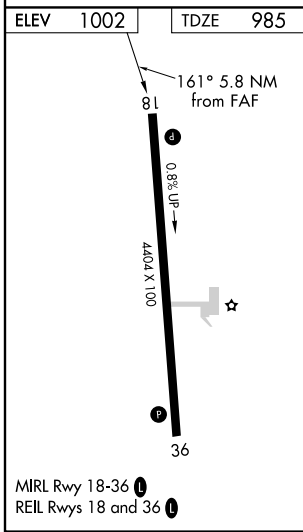
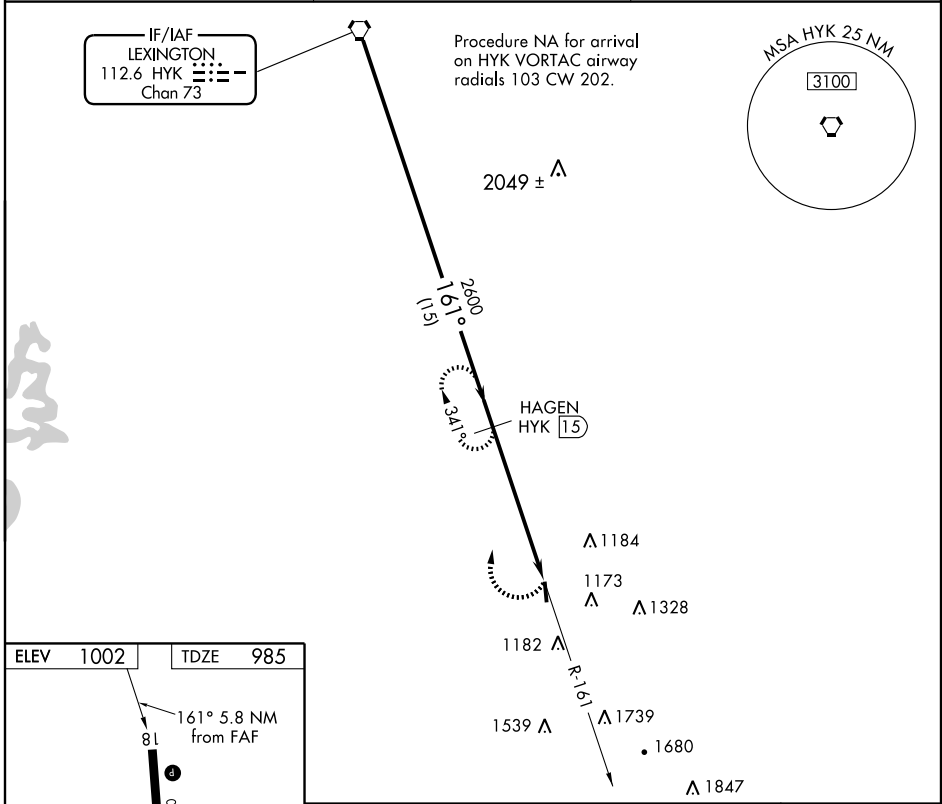
VOR/DME RWY 18

RICHMOND/MADISON (I39)

NA Visibility reduction by helicopters NA. When local altimeter setting not received use Lexington altimeter setting and increase all MDA 80 feet.

MISSED APPROACH: Climbing right turn to 2600 via HYK VORTAC R-161 to HAGEN/15 DME and hold.

AWOS-3 119,625	LEXINGTON APP CON 120.15 259.3	UNICOM 122.8 (CTAF) 0
--------------------------	--	--



VORTAC 2800	Procedure Turn NA	HAGEN HYK 15			
		HYK 20.8			
		15 NM	5.8 NM		
CATEGORY	A	B	C	D	
S-18	1460-1 475 (500-1)	1460-1¼ 475 (500-1¼)	1460-1½ 475 (500-1½)	1460-1¾ 475 (500-1¾)	
CIRCLING	1480-1 478 (500-1)	1480-1¼ 478 (500-1¼)	1480-1½ 478 (500-1½)	1560-2 558 (600-2)	

SE-1, 31 MAY 2012 to 28 JUN 2012

SE-1, 31 MAY 2012 to 28 JUN 2012