

RICHMOND, KENTUCKY

AL-6610 (FAA)

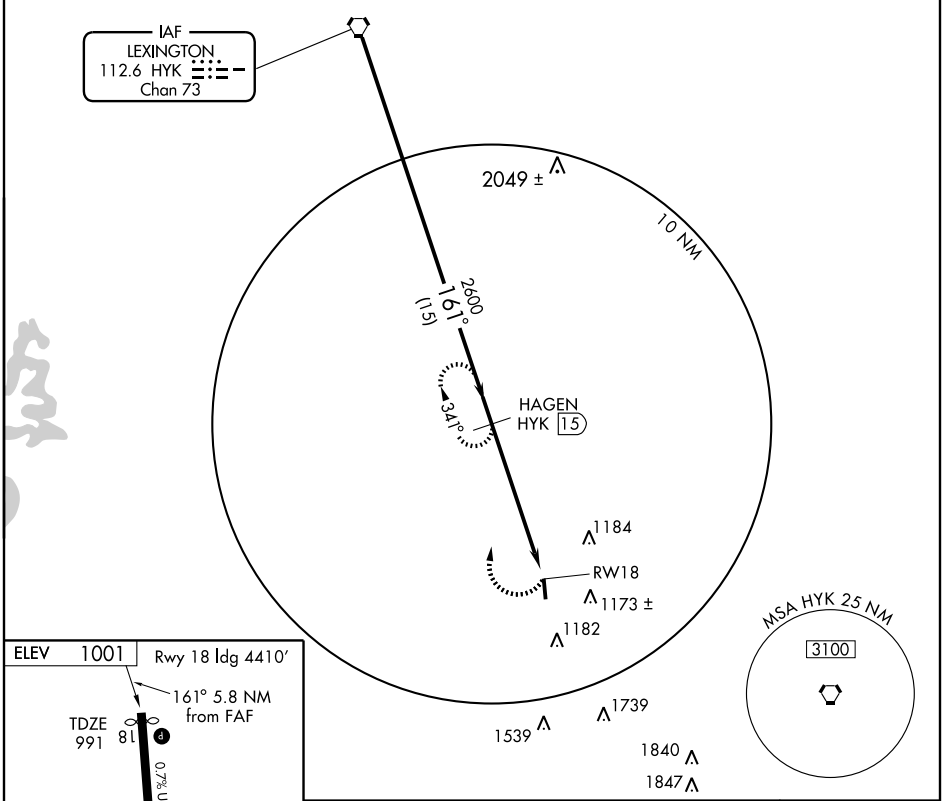
VOR/DME or GPS RWY 18

RICHMOND/MADISON (I39)

VORTAC HYK 112.6 Chan 73	APP CRS 161°	Rwy ldg TDZE Apt Elev	4410 991 1001
--	------------------------	-----------------------------	--

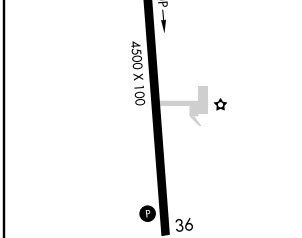
▲ NA Use Lexington altimeter setting. MISSED APPROACH: Climbing right turn to 2600 via HYK R-161 to HAGEN/15 DME and hold.

AWOS-3 119,625	LEXINGTON APP CON 120.15 259.3	UNICOM 122.8 (CTAF) ①
--------------------------	--	--

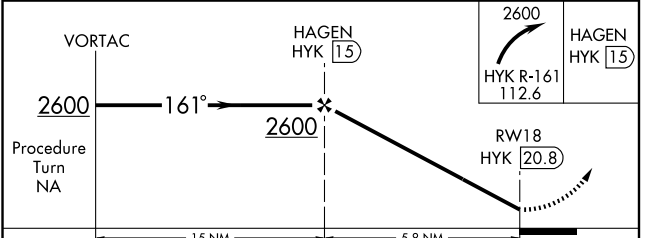


SE-1, 19 NOV 2009 to 17 DEC 2009

SE-1, 19 NOV 2009 to 17 DEC 2009



MIRL Rwy 18-36 ①	REIL Rwys 18 and 36 ①
Knots	60 90 120 150 180
Min:Sec	



CATEGORY	A	B	C	D
S-18	1520-1 529 (600-1)	1520-1¼ 529 (600-1¼)	1520-1½ 529 (600-1½)	NA
CIRCLING	1540-1 539 (600-1)	1540-1¼ 539 (600-1¼)	1540-1½ 539 (600-1½)	NA

RICHMOND, KENTUCKY
Amdt 5 08157

RICHMOND/MADISON (I39)
37°38'N-84°20'W **VOR/DME or GPS RWY 18**

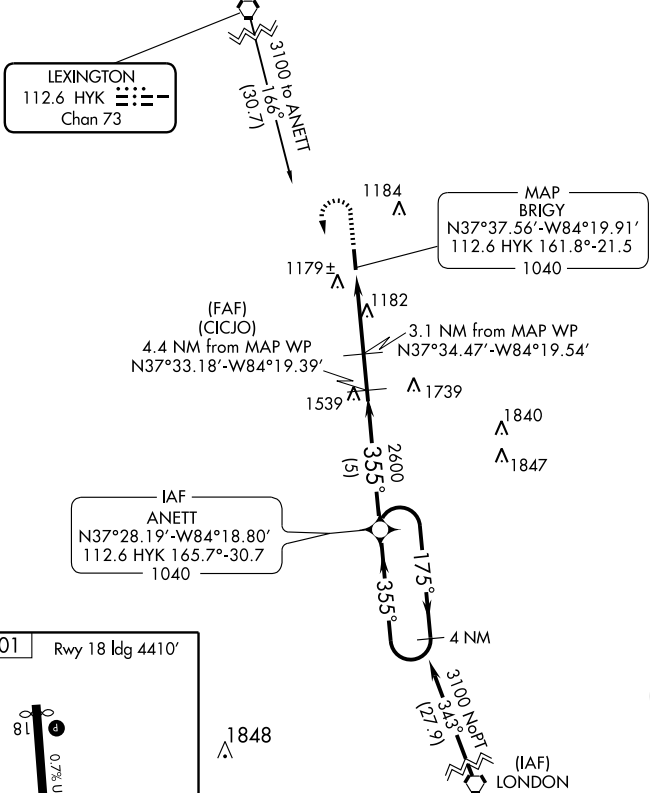
VORTAC HYK 112.6 Chan 73	APP CRS 355°	Rwy ldg TDZE Apt Elev	4500 1001 1001
--	------------------------	-----------------------------	---

VOR/DME RNAV or GPS RWY 36

RICHMOND/MADISON (I39)

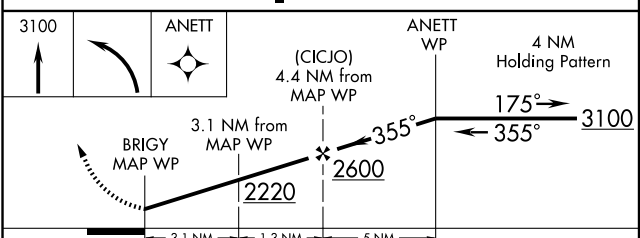
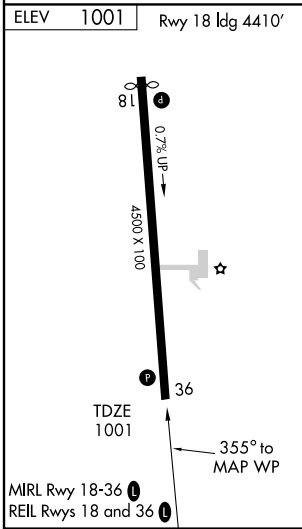
▲ NA Use Lexington altimeter setting. MISSED APPROACH: Climb to 3100 then left turn direct ANETT WP and hold.

AWOS-3 119.625	LEXINGTON APP CON 120.15 259.3	UNICOM 122.8 (CTAF) ①
--------------------------	--	--



SE-1, 19 NOV 2009 to 17 DEC 2009

SE-1, 19 NOV 2009 to 17 DEC 2009



CATEGORY	A	B	C	D
S-36	1600-1	599 (600-1)	1600-1½ 599 (600-1½)	1600-1¾ 599 (600-1¾)
CIRCLING	1640-1	639 (700-1)	1640-1¾ 639 (700-1¾)	1640-2 639 (700-2)

VOR/DME RNAV or GPS RWY 36