

NDB RWY 23

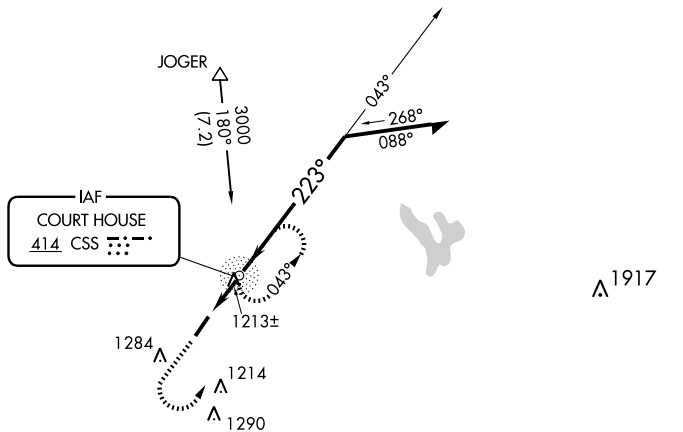
WASHINGTON COURT HOUSE/FAYETTE COUNTY (I23)

NDB CSS 414	APP CRS 223°	Rwy Idg TDZE Apt Elev	5097 979 980
-----------------------	------------------------	-----------------------------	---

▽ When local altimeter setting not received, use Wilmington Air Park altimeter setting and increase all MDAs 60 feet and Circling visibility Cats C and D ¼ mile. Visibility reduction by helicopters NA.

△ NA MISSED APPROACH: Climb to 2000, then climbing left turn to 2600 direct CSS NDB and hold.

AWOS-3 118.775	COLUMBUS APP CON 119.15 279.6	UNICOM 122.8 (CTAF) 0
--------------------------	---	---------------------------------



EC-2, 31 MAY 2012 to 28 JUN 2012

EC-2, 31 MAY 2012 to 28 JUN 2012

ELEV	980	TDZE	979
------	-----	------	-----

223° 1.9 NM from FAF

REIL Rwy 23
MIRL Rwy 5-23

Knots	60	90	120	150	180
Min:Sec	1:54	1:16	0:57	0:46	0:38

2000	2600	CSS	Remain within 10 NM
↑	↶	○	

NDB 043° 2600

223° 1700

≤ 3.48° TCH 40

1.9 NM

VGSI and descent angles not coincident.

CATEGORY	A	B	C	D
S-23	1580-1	601 (600-1)	1580-1¾ 601 (600-1¾)	1580-2 601 (600-2)
CIRCLING	1580-1	600 (600-1)	1640-1¾ 660 (700-1¾)	1640-2 660 (700-2)

NDB RWY 23

RNAV (GPS) RWY 23

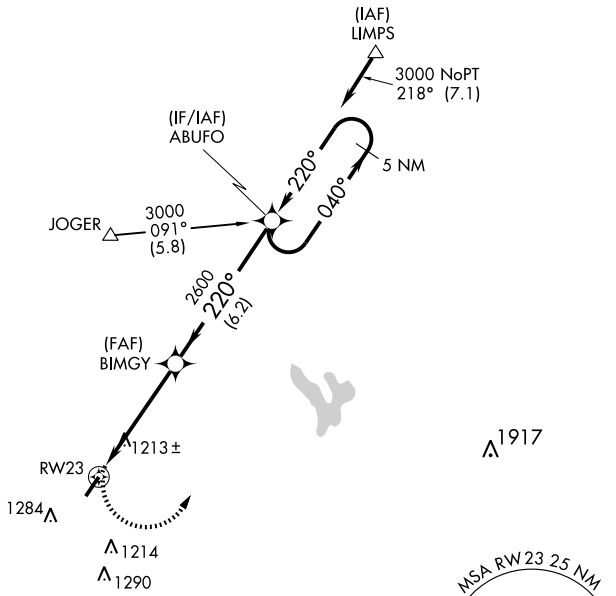
WASHINGTON COURT HOUSE/FAYETTE COUNTY (I23)

APP CRS	Rwy Idg	5097
220°	TDZE	979
	Apt Elev	980

NA When local altimeter setting not received, use Wilmington Air Park altimeter setting and increase all MDAs 60 feet and visibility Cats C and D ¼ mile. Visibility reduction by helicopters NA. DME/DME RNP-0.3 NA.

MISSED APPROACH: Climbing left turn to 3000 direct ABUFO and hold.

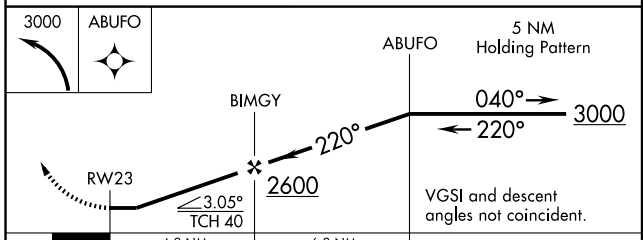
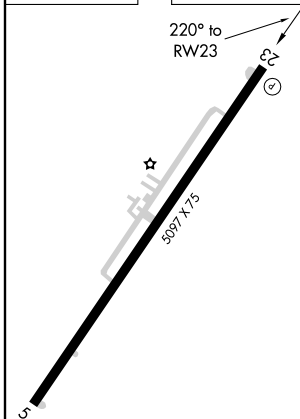
AWOS-3 118.775	COLUMBUS APP CON 119.15 279.6	UNICOM 122.8 (CTAF)
--------------------------	---	-------------------------------



EC-2, 31 MAY 2012 to 28 JUN 2012

EC-2, 31 MAY 2012 to 28 JUN 2012

ELEV	980	TDZE	979
------	------------	------	------------



CATEGORY	A	B	C	D
LNAV MDA	1540-1	561 (600-1)	1540-1½ 561 (600-1½)	1540-1¾ 561 (600-1¾)
CIRCLING	1580-1	600 (600-1)	1640-1¾ 660 (700-1¾)	1640-2 660 (700-2)

RNAV (GPS) RWY 23