

VORTAC HTO 113.6 Chan 83	APP CRS 063°	Rwy Idg TDZE N/A Apt Elev 55
--	------------------------	--

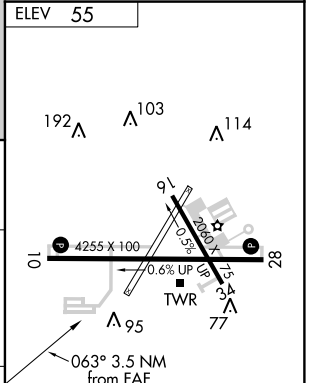
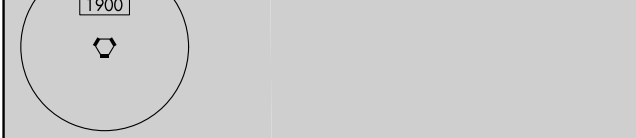
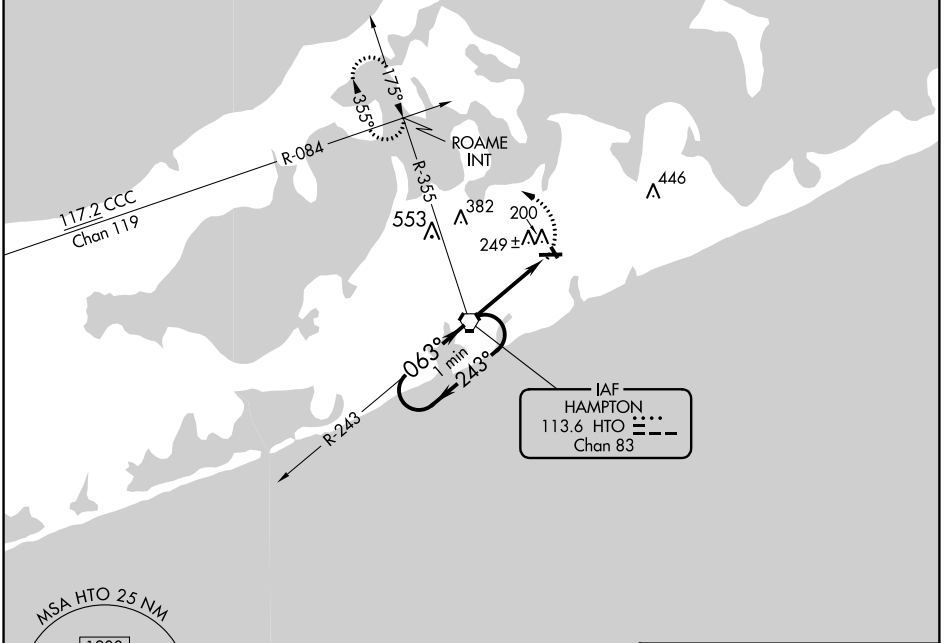
VOR-A

EAST HAMPTON (HTO)

⚠ When local altimeter setting not received, use Westhampton Beach altimeter setting. Helicopter visibility reduction below 1 SM NA. Night landing: Rwy 10, 28 operational VGSI required, remain on or above VGSI glidepath until threshold.

MISSED APPROACH: Climbing left turn to 2000 via heading 280° and HTO. VORTAC R-355 to ROAME INT and hold.

AWOS-3PT 118.075	NEW YORK APP CON 125.975 343.65	GND CON 121.9	CLNC DEL 118.95	CTAF 125.225	UNICOM 122.7
----------------------------	---	-------------------------	---------------------------	------------------------	------------------------



One Minute Holding Pattern	2000	HTO R-355	ROAME INT
	hdg 280°		
1700 ← 243°	→ 063° 1700	HTO (3.5)	
		3.5 NM	

CATEGORY	A	B	C	D
C CIRCLING	600-1 545 (600-1)		640-1½ 585 (600-1½)	800-2½ 745 (800-2½)
WESTHAMPTON BEACH ALTIMETER SETTING MINIMUMS				
C CIRCLING	640-1 585 (600-1)		700-1¾ 645 (700-1¾)	840-2¼ 785 (800-2¼)
FAF to MAP 3.5 NM				
Knots	60	90	120	150 180
Min:Sec	3:30	2:20	1:45	1:24 1:10

NE-2, 27 APR 2017 to 25 MAY 2017

NE-2, 27 APR 2017 to 25 MAY 2017