

WAAS CH 77928 W10B	APP CRS 102°	Rwy Idg 4255 TDZE 55 Apt Elev 55
--	------------------------	---

RNAV (GPS) X RWY 10

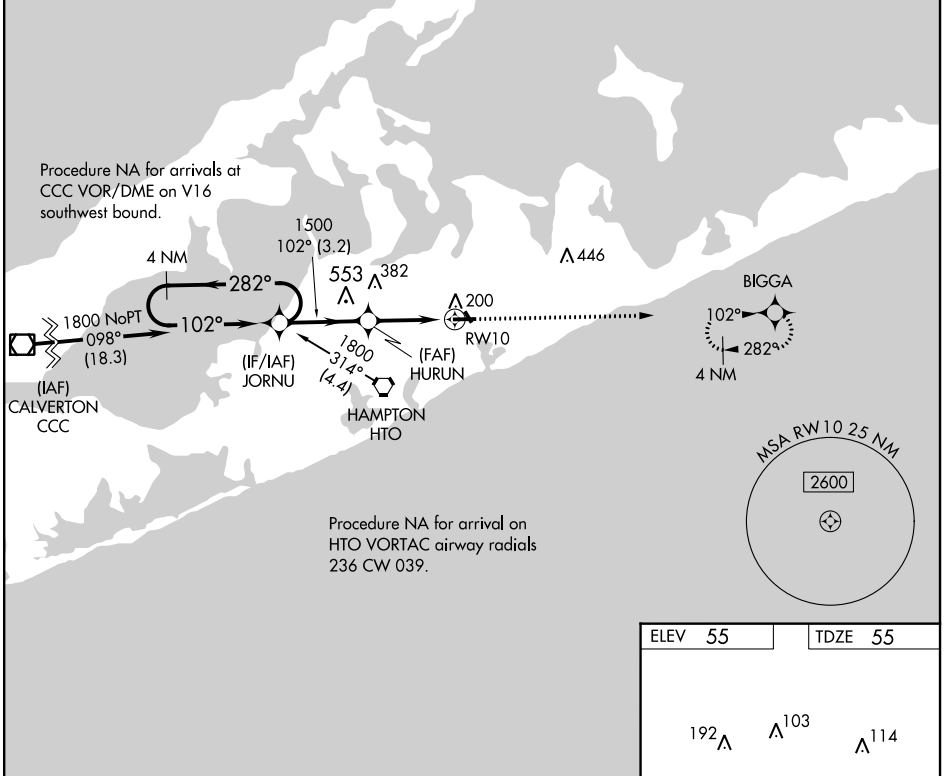
EAST HAMPTON (HTO)

⚠ Baro-VNAV NA when using Westhampton Beach altimeter setting. For uncompensated Baro-VNAV systems, LNAV/VNAV NA below -15°C (5°F) or above 54°C (130°F). DME/DME RNP-0.3 NA.

⚠ NA Helicopter visibility reduction below 1 SM NA. When local altimeter setting not received, use Westhampton Beach altimeter setting and increase all DA 45 feet and increase LPV and LNAV/VNAV visibility 1/8 mile. Night landing: Rwy 10, 28 operational VGSI required, remain on or above VGSI glidepath until threshold.

MISSED APPROACH: Climb to 2000 direct BIGGA and hold.

AWOS-3PT 118.075	NEW YORK APP CON 125.975 343.65	EAST HAMPTON TOWER ★ 125.225 (CTAF) 0	GND CON 121.9	CLNC DEL 118.95	UNICOM 122.7
----------------------------	---	---	-------------------------	---------------------------	------------------------



NE-2, 14 SEP 2017 to 12 OCT 2017

NE-2, 14 SEP 2017 to 12 OCT 2017

ELEV 55		TDZE 55	
<p>4 NM Holding Pattern</p> <p>VGSI and RNAV glidepath not coincident (VGSI Angle 3.30/TCH 49).</p> <p>2000 BIGGA</p> <p>102° to RWY 10</p>			
<p>JORNU</p> <p>1800 ← 282°</p> <p>102° →</p> <p>GP 4.20°</p> <p>TCH 60</p>		<p>HURUN</p> <p>1500</p> <p>1500</p> <p>RWY 10</p>	
← 3.2 NM		← 3.1 NM	
CATEGORY	A	B	C
LPV DA	394-1 339 (400-1)		NA
LNAV/VNAV DA	531-1 3/8 476 (500-1 3/8)		NA
<p>MIRL Rwy 10-28 0</p> <p>REIL Rws 10 and 28 0 ★</p>			