

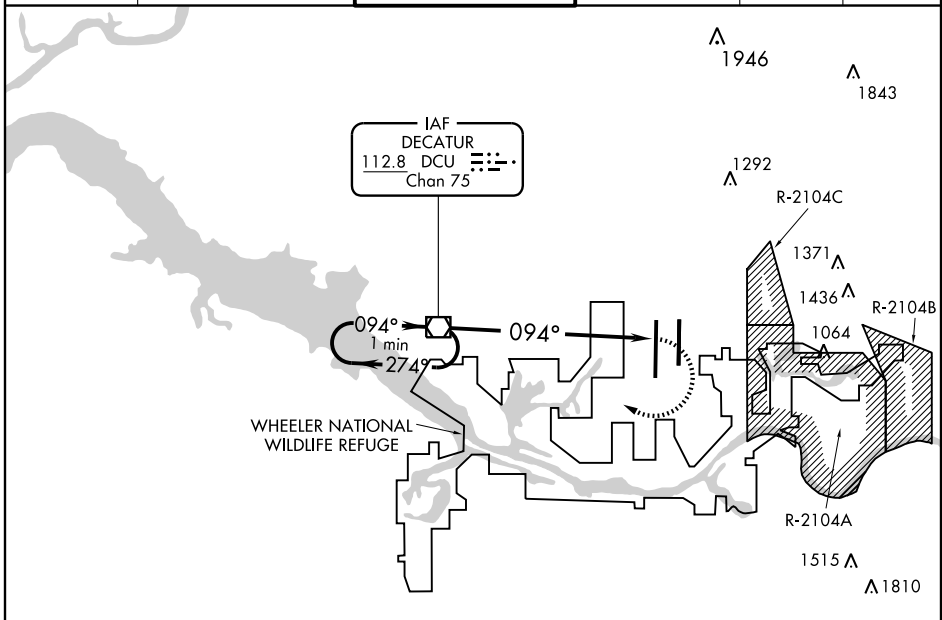
VOR/DME DCU <b>112.8</b> Chan <b>75</b>	APP CRS <b>094°</b>	Rwy Idg TDZE Apt Elev <b>629</b>	<b>N/A</b> <b>N/A</b> <b>629</b>
---	------------------------	---	--

**VOR-A**

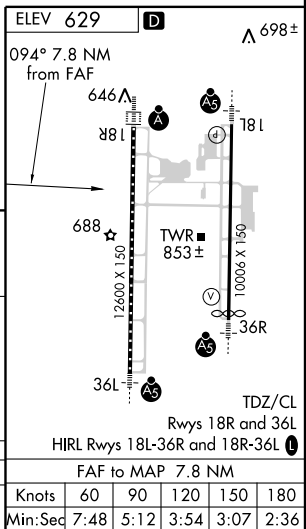
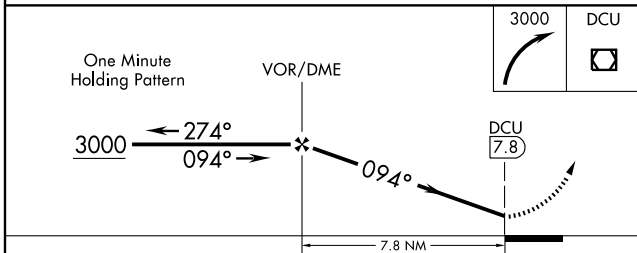
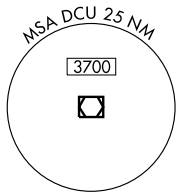
HUNTSVILLE INTL-CARL T. JONES FIELD (HSV)

<p><b>ASR</b> When local altimeter setting not received, use Decatur altimeter setting and increase all MDA 40 feet. Circling NA for Cat E east of Rwy 18L-36R.</p>	<p>MISSED APPROACH: Climbing right turn to 3000 direct DCU VOR/DME and hold.</p>
---	--

<p>ATIS <b>121.25</b></p>	<p>HUNTSVILLE APP CON * <b>125.6 354.1</b></p>	<p>HUNTSVILLE TOWER * <b>127.6</b> (CTAF) <b>350.35</b></p>	<p>GND CON <b>121.9 269.525</b></p>	<p>CLNC DEL <b>120.35</b></p>	<p>UNICOM <b>122.95</b></p>
-------------------------------	--	---	---	-----------------------------------	---------------------------------



CAUTION: Numerous migratory bird flocks in area. Wildlife Refuge Area south of airport.



CATEGORY	A	B	C	D	E	FAF to MAP 7.8 NM					
CIRCLING	1180-1	551 (600-1)	1180-1½ 551 (600-1½)	1240-2 611 (700-2)	1240 2¼ 611 (700-2¼)	Knots	60	90	120	150	180
						Min:Seq	7:48	5:12	3:54	3:07	2:36

**VOR-A**

SE-4, 31 MAY 2012 to 28 JUN 2012

SE-4, 31 MAY 2012 to 28 JUN 2012