


WAAS CH 86606 W36B	APP CRS 002°	Rwy Idg TDZE Apt Elev	9800 595 629
--	------------------------	-----------------------------	---

RNAV (GPS) RWY 36R

HUNTSVILLE INTL-CARL T. JONES FIELD (HSV)

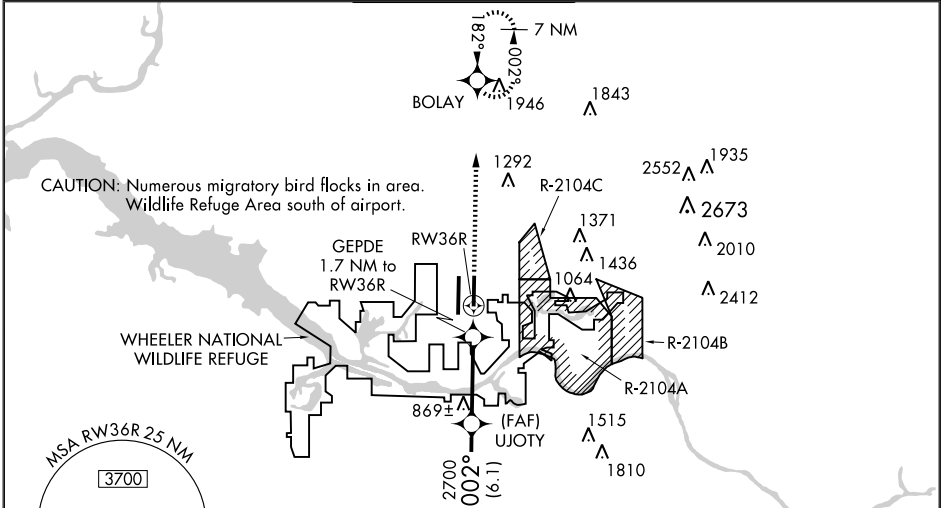
▽ For inoperative MALSRS when using Decatur altimeter setting, increase LPV Cat E visibility to RVR 4000, LNAV/VNAV Cat E visibility to RVR 6000, and LNAV Cat E visibility to 1 1/4 mile. For inoperative MALSRS, increase LPV Cat E visibility to RVR 4000, LNAV/VNAV Cat E visibility to RVR 6000 and LNAV Cat E visibility to 1 1/2 mile. Baro-VNAV NA when using Decatur altimeter setting. Circling NA for Cat E east of Rwy 18L-36R. For uncompensated Baro-VNAV systems, LNAV/VNAV NA below -16°C (4°F) or above 48°C (118°F). DME/DME RNP-0.3 NA. When local altimeter setting not received, use Decatur altimeter setting and increase LPV DA to 821, LNAV/VNAV DA to 958 and MDA 40 feet, and LNAV Cat E visibility to RVR 6000. Simultaneous approach authorized with ILS or LOC Rwy 36L. LNAV procedure NA during simultaneous operations. Use of FD or AP providing RNAV track guidance required during simultaneous operations.

MALSRS



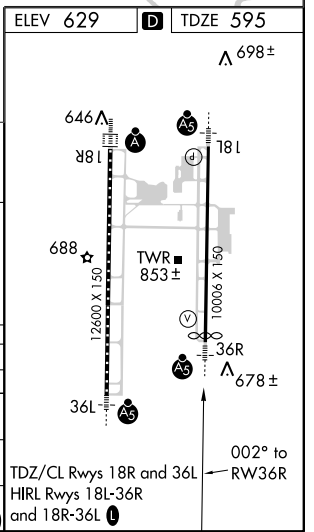
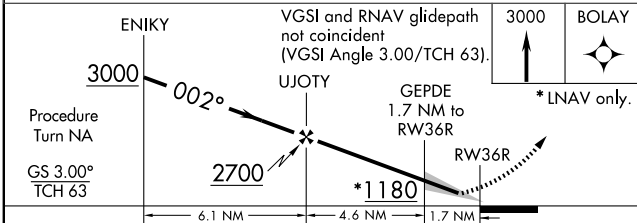
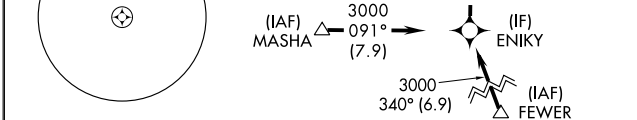
MISSED APPROACH: Climb to 3000 direct BOLAY and hold.

ATIS 121.25	HUNTSVILLE APP CON * 125.6 354.1	HUNTSVILLE TOWER * 127.6 (CTAF) 350.35	GND CON 121.9 269.525	CLNC DEL 120.35	UNICOM 122.95
-----------------------	--	--	---------------------------------	---------------------------	-------------------------



SE-4, 31 MAY 2012 to 28 JUN 2012

SE-4, 31 MAY 2012 to 28 JUN 2012



CATEGORY	A	B	C	D	E
LPV DA	796/24		201 (200-1/2)		
LNAV/ VNAV DA	933/40		338 (400-3/4)		
LNAV MDA	1040/24	445 (500-1/2)	1040/40 445 (500-3/4)	1040/50	445 (500-1)
CIRCLING	1160-1	531 (600-1)	1160-1 1/2 531 (600-1 1/2)	1240-2 611 (700-2)	1240-2 1/4 611 (700-2 1/4)