

WAAS CH 82606 W36A	APP CRS 002°	Rwy Idg 12600 TDZE 615 Apt Elev 629
--	------------------------	--

RNAV (GPS) RWY 36L

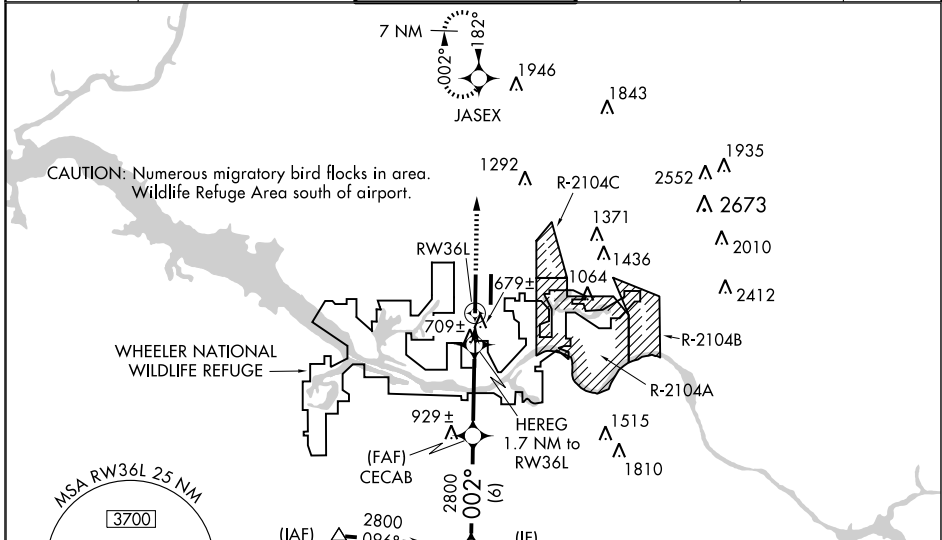
HUNTSVILLE INTL-CARL T. JONES FIELD (HSV)

ASR For inoperative MALSR, increase LNAV Cat D and E visibility to RVR 6000, LPV Cat E visibility to RVR 4000, and LNAV/VNAV Cat E visibility to RVR 6000. Baro-VNAV NA when using Decatur altimeter setting. Circling NA for Cat E east of Rwy 18L-36R. For uncompensated Baro-VNAV systems, LNAV/VNAV NA below -16°C (4°F) or above 48°C (118°F). DME/DME RNP-0.3 NA. When local altimeter setting not received, use Decatur altimeter setting and increase LPV DA to 840, LNAV/VNAV DA to 994 and all MDA 40 feet. VDP NA when using Decatur altimeter setting. Simultaneous approach authorized with ILS or LOC Rwy 36R. LNAV procedure NA during simultaneous operations. Use of FD or AP providing RNAV track guidance required during simultaneous operations.

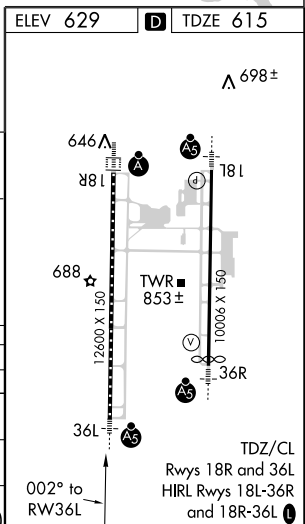
MALSR

MISSED APPROACH:
Climb to 3000 direct JASEX and hold.

ATIS 121.25	HUNTSVILLE APP CON ★ 125.6 354.1	HUNTSVILLE TOWER ★ 127.6 (CTAF) 350.35	GND CON 121.9 269.525	CLNC DEL 120.35	UNICOM 122.95
-----------------------	--	--	---------------------------------	---------------------------	-------------------------



	BOSAC	CECAB	HEREG 1.7 NM to RW36L	3000	JASEX
	2800	2800			
	GS 3.00° TCH 63				
	6 NM	4.9 NM	0.8 NM	0.9 NM	
CATEGORY	A	B	C	D	E
LPV DA	815/24		200 (200-½)		
LNAV/VNAV DA	969/40		354 (400-¾)		
LNAV MDA	960/24 345 (400-½)		960/50 345 (400-1)		
CIRCLING	1160-1 531 (600-1)		1160-1½ 531 (600-1½)	1240-2 611 (700-2)	1240-2¼ 611 (700-2¼)



SE-4, 31 MAY 2012 to 28 JUN 2012

SE-4, 31 MAY 2012 to 28 JUN 2012