


WAAS CH 58206 W18B	APP CRS 182°	Rwy Idg 12600 TDZE 629 Apt Elev 629
--	------------------------	--

RNAV (GPS) RWY 18R

HUNTSVILLE INTL-CARL T. JONES FIELD (HSV)

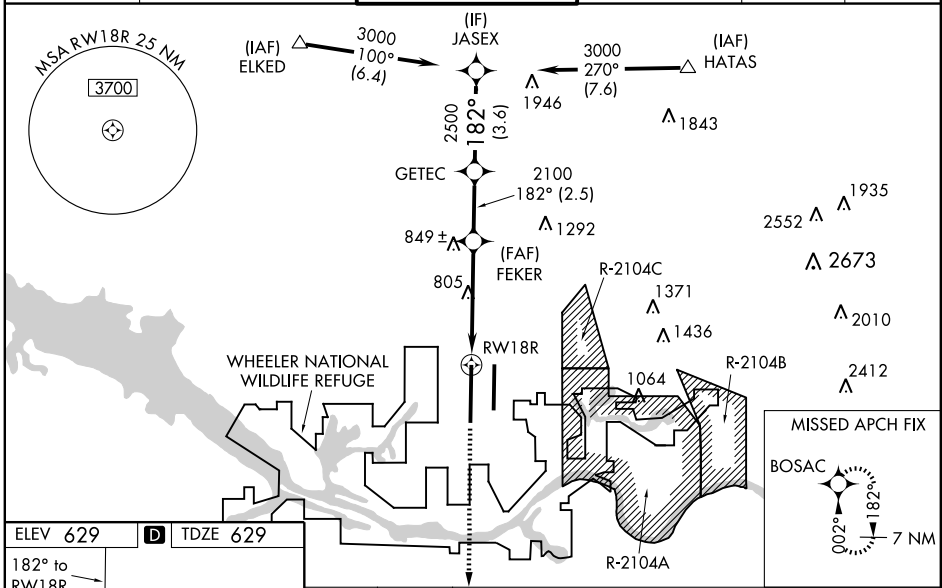
ASR For inoperative ALSF, increase LPV Cat E visibility to RVR 4000, LNAV/VNAV Cat E visibility to RVR 6000 and LNAV Cat E visibility to 1½, when using Decatur altimeter setting, increase LNAV/VNAV Cat E visibility to 1½ and LNAV Cat E visibility to 2. Circling NA for Cat E east of Rwy 18L-36R. Baro-VNAV NA when using Decatur altimeter setting. For uncompensated Baro-VNAV systems, LNAV/VNAV NA below -16°C (4°F) or above 47°C (116°F). DME/DME RNP-0.3 NA. When local altimeter setting not received, use Decatur altimeter setting and increase LPV DA to 854, LNAV/VNAV DA to 1042 and all MDA 40 feet; increase LNAV/VNAV all Cats visibility to RVR 5000 and LNAV Cat C visibility to RVR 5000, Cat D visibility to RVR 6000 and Cat E visibility to 1½. VDP NA when using Decatur altimeter setting.

ALSF-2



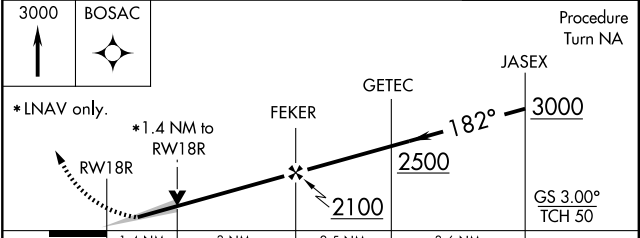
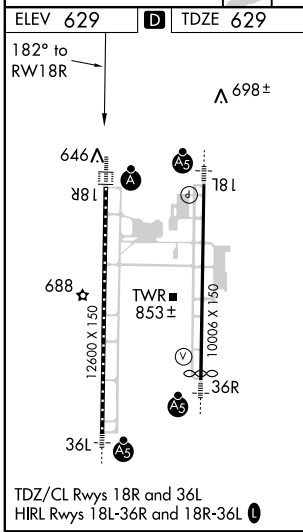
MISSED APPROACH:
Climb to 3000 direct BOSAC and hold.

ATIS 121.25	HUNTSVILLE APP CON ★ 125.6 354.1	HUNTSVILLE TOWER ★ 127.6 (CTAF) 350.35	GND CON 121.9 269.525	CLNC DEL 120.35	UNICOM 122.95
-----------------------	--	--	---------------------------------	---------------------------	-------------------------



SE-4, 31 MAY 2012 to 28 JUN 2012

SE-4, 31 MAY 2012 to 28 JUN 2012



CATEGORY	A	B	C	D	E
LPV DA	829/24 200 (200-½)				
LNAV/VNAV DA	1017/40 388 (400-¾)				
LNAV MDA	1120/24 491 (500-½)	1120/40 491 (500-¾)	1120/50 491 (500-1)	1120/60 491 (500-1¼)	1120/60 491 (500-1½)
CIRCLING	1160-1 531 (600-1)	1160-1½ 531 (600-1½)	1240-2 611 (700-2)	1240-2¼ 611 (700-2¼)	1240-2½ 611 (700-2½)