


WAAS CH 72906 W18A	APP CRS 182°	Rwy Idg TDZE Apt Elev	10006 609 629
--	------------------------	-----------------------------	--

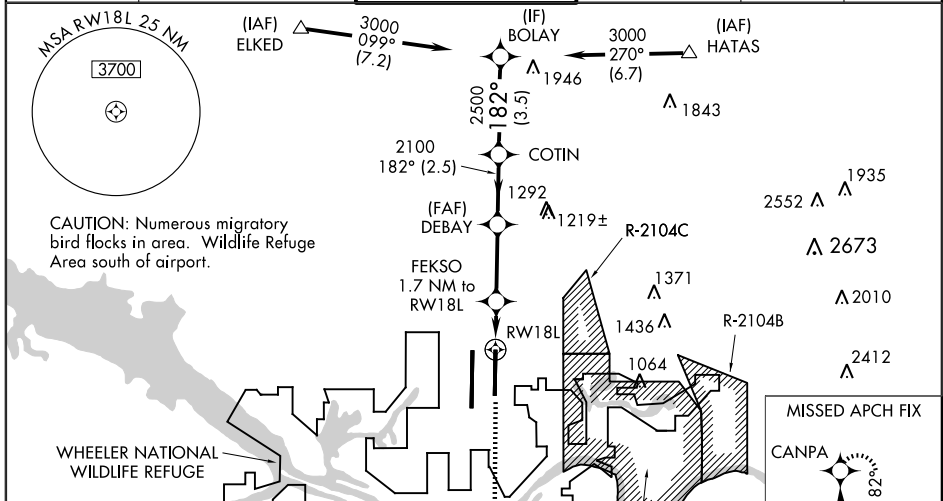
RNAV (GPS) RWY 18L

HUNTSVILLE INTL-CARL T. JONES FIELD (HSV)

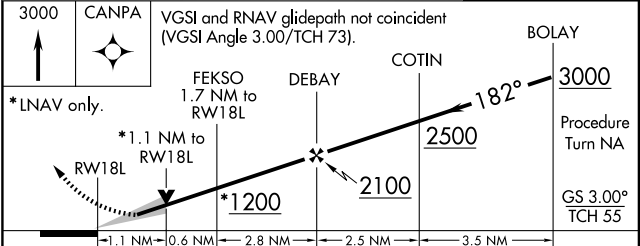
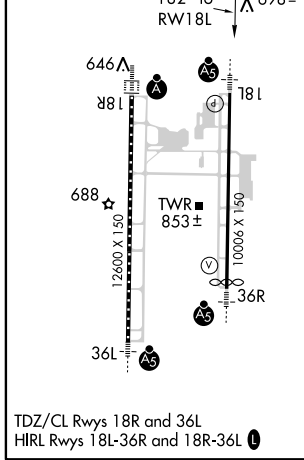
▼ For inoperative MALSR, increase LPV Cat E visibility to RVR 4000, LNAV/VNAV Cat E visibility to 1½ and LNAV Cat E visibility to 1½. Baro-VNAV NA when using Decatur altimeter setting. Circling NA for Cat E east of Rwy 18L-36R. DME/DME RNP-0.3 NA. For uncompensated Baro-VNAV systems, LNAV/VNAV NA below -16°C (4°F) or above 47°C (116°F). When local altimeter setting not received, use Decatur altimeter setting and increase LPV DA to 834, LNAV/VNAV DA to 1042 and all MDAs 40 feet. VDP NA when using Decatur altimeter setting. For inoperative MALSR when using Decatur altimeter setting, increase LPV Cat E visibility to RVR 4000, LNAV/VNAV Cat E visibility to 1½ and LNAV Cat E visibility to 1¾. Simultaneous approach authorized with ILS or LOC Rwy 18R, ILS Rwy 18R (Cat II). Use of FD or AP providing RNAV track guidance required during simultaneous operations. LNAV procedure NA during simultaneous operations.

MALSR

MISSED APPROACH:
Climb to 3000 direct CANPA and hold.

ATIS 121.25	HUNTSVILLE APP CON ★ 125.6 354.1	HUNTSVILLE TOWER ★ 127.6 (CTAF) 350.35	GND CON 121.9 269.525	CLNC DEL 120.35	UNICOM 122.95
-----------------------	--	--	---------------------------------	---------------------------	-------------------------



ELEV 629	D	TDZE 609
----------	----------	----------



CATEGORY	A	B	C	D	E
LPV DA	809/24 200 (200-½)				
LNAV/VNAV DA	1017/50 408 (400-1)				
LNAV MDA	1040/24	431 (500-½)	1040/40 431 (500-¾)	1040/50	431 (500-1)
CIRCLING	1160-1	531 (600-1)	1160-1½ 531 (600-1½)	1240-2	1240-2¼ 611 (700-2¼)

SE-4, 31 MAY 2012 to 28 JUN 2012

SE-4, 31 MAY 2012 to 28 JUN 2012