


LOC I-ELL <b>108.5</b>	APP CRS <b>002°</b>	Rwy ldg <b>12600</b>
		TDZE <b>615</b>
		Apt Elev <b>629</b>

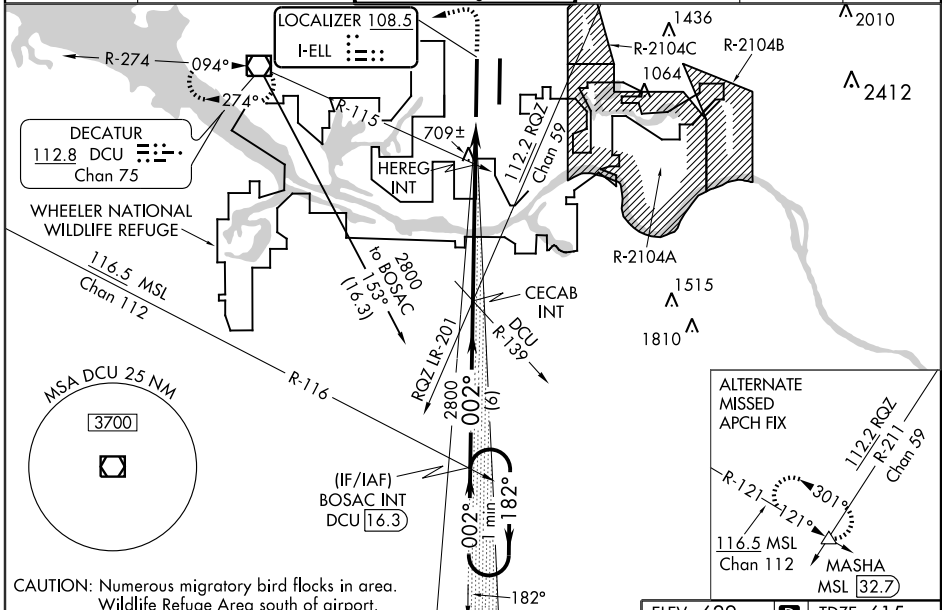
# ILS or LOC RWY 36L

HUNTSVILLE INTL-CARL T. JONES FIELD (HSV)

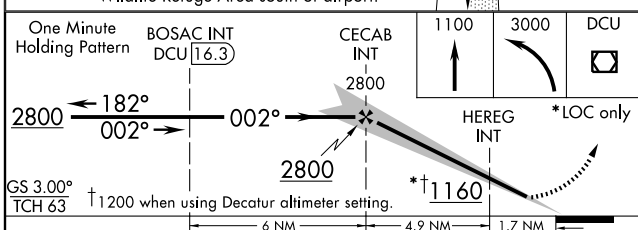
**▲** For inoperative MALSR, increase S-ILS 36L Cat E visibility to RVR 4000, S-LOC 36L Cat E visibility to 2 miles. **HEREG** fix minimums S-LOC 36L increase Cat E visibility to RVR 6000. When local altimeter setting not received, use Decatur altimeter setting and increase DA to 840 and all MDA 40 feet. For inoperative MALSR when using Decatur altimeter setting increase S-ILS 36L Cat E visibility to RVR 4000, S-LOC 36L Cat E visibility to 2 miles, **HEREG** fix minimums: S-LOC 36L increase Cat E visibility to RVR 6000. Circling NA for Cat E east of Rwy 18L-36R. Simultaneous approach authorized with Rwy 36R.

**MALSR**  
  
**MISSED APPROACH:**  
 Climb to 1100 then  
 climbing left turn to 3000  
 direct DCU VOR/DME  
 and hold, continue  
 climb-in-hold to 3000.

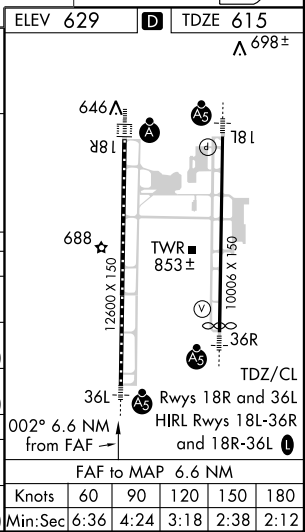
ATIS <b>121.25</b>	HUNTSVILLE APP CON * <b>125.6 354.1</b>	HUNTSVILLE TOWER * <b>127.6 (CTAF) 350.35</b>	GND CON <b>121.9 269.525</b>	CLNC DEL <b>120.35</b>	UNICOM <b>122.95</b>
-----------------------	--	--	---------------------------------	---------------------------	-------------------------



CAUTION: Numerous migratory bird flocks in area. Wildlife Refuge Area south of airport.



CATEGORY	A	B	C	D	E
S-ILS 36L	815/18		200 (200-½)		815/24 200 (200-½)
S-LOC 36L	1160/24	545 (600-½)	1160/50 545 (600-1)	1160/60 545 (600-1¼)	1160-1½ 545 (600-1½)
CIRCLING	1160-1	531 (600-1)	1160-1½ 531 (600-1½)	1240-2 611 (700-2)	1240-2¼ 611 (700-2¼)
HEREG FIX MINIMUMS					
S-LOC 36L	960/24	345 (400-½)	960/40		345 (400-¾)
CIRCLING	1160-1	531 (600-1)	1160-1½ 531 (600-1½)	1240-2 611 (700-2)	1240-2¼ 611 (700-2¼)



SE-4, 31 MAY 2012 to 28 JUN 2012

SE-4, 31 MAY 2012 to 28 JUN 2012