

LOC I-HSV 109.3	APP CRS 184°	Rwy Idg 12600 TDZE 629 Apt Elev 629
---------------------------	------------------------	--

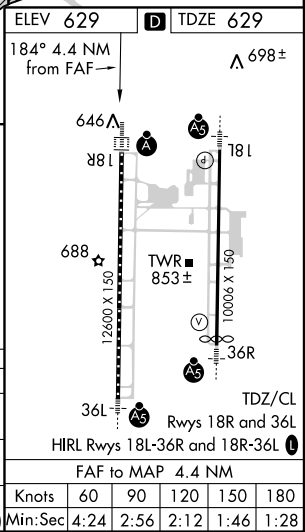
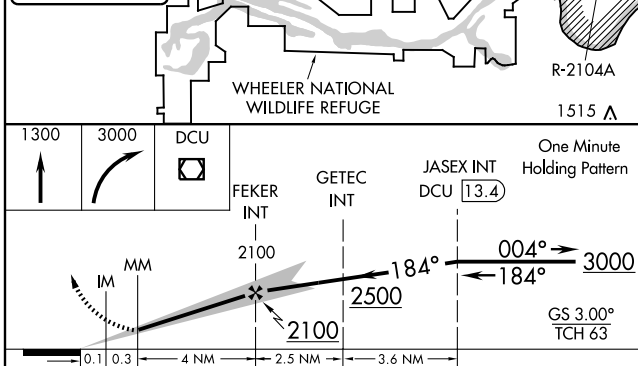
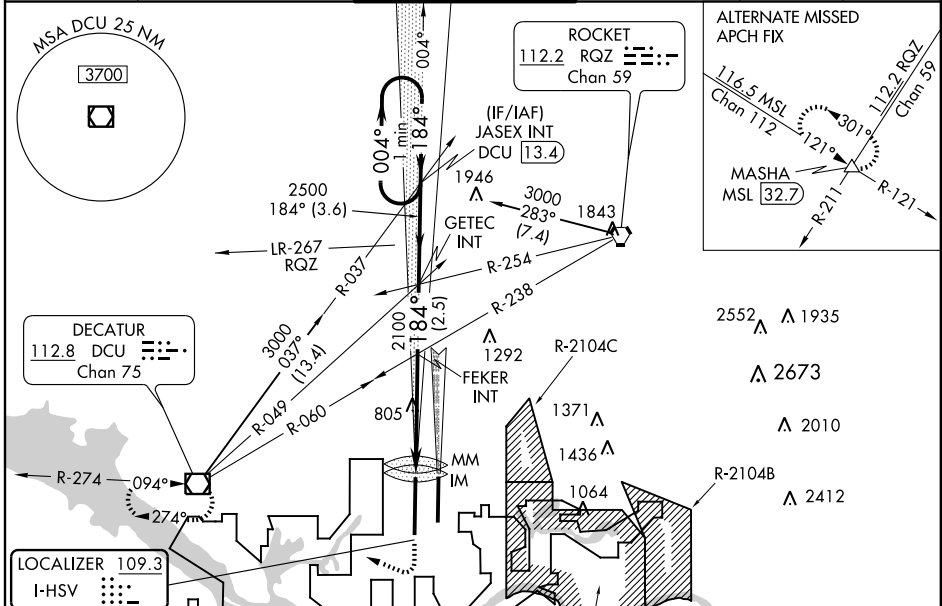
ILS or LOC RWY 18R

HUNTSVILLE INTL-CARL T. JONES FIELD (HSV)

ASR For inoperative ALSF-2, increase S-ILS 18R Cat E visibility to RVR 4000 and S-LOC 18R Cat E visibility to 1½ miles, when using Decatur altimeter setting increase S-ILS 18R Cat E visibility to RVR 4000, and S-LOC 18R Cat E visibility to 1¾. Circling NA for Cat E east of Rwy 18L-36R. When local altimeter setting not received, use Decatur altimeter setting and increase S-ILS 18R DA to 854 and all MDA 40 feet, and increase S-LOC 18R Cat E visibility to RVR 6000. Cat II minimums NA. Simultaneous approach authorized with Rwy 18L.

ALSF-2 MISSED APPROACH: Climb to 1300 then climbing right turn to 3000 direct DCU VOR/DME and hold.

ATIS 121.25	HUNTSVILLE APP CON * 125.6 354.1	HUNTSVILLE TOWER * 127.6 (CTAF) 350.35	GND CON 121.9 269.525	CLNC DEL 120.35	UNICOM 122.95
-----------------------	--	--	---------------------------------	---------------------------	-------------------------



CATEGORY	A	B	C	D	E
S-ILS 18R	829/18 200 (200-½)				
S-LOC 18R	1060/24 431 (500-½)	1060/40 431 (500-¾)	1060/50 431 (500-1)		
CIRCLING	1160-1 531 (600-1)	1160-1½ 531 (600-1½)	1240-2 611 (700-2)	1240-2¼ 611 (700-2¼)	

SE-4, 31 MAY 2012 to 28 JUN 2012

SE-4, 31 MAY 2012 to 28 JUN 2012