

| | | |
|---------------------------|------------------------|-------------------------|
| LOC I-TVN 111.9 | APP CRS 182° | Rwy Ldg 10006 |
| | | TDZE 609 |
| | | Apt Elev 629 |

ILS or LOC RWY 18L

HUNTSVILLE INTL-CARL T. JONES FIELD (HSV)

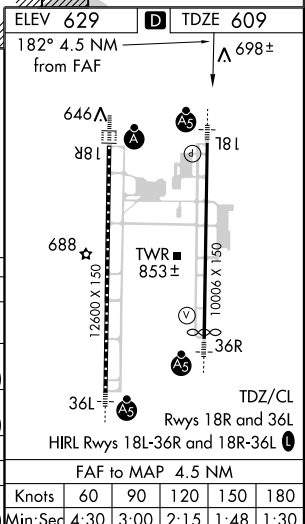
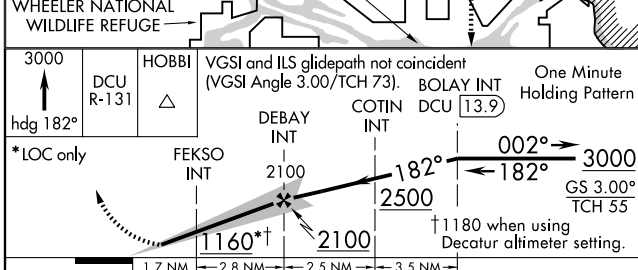
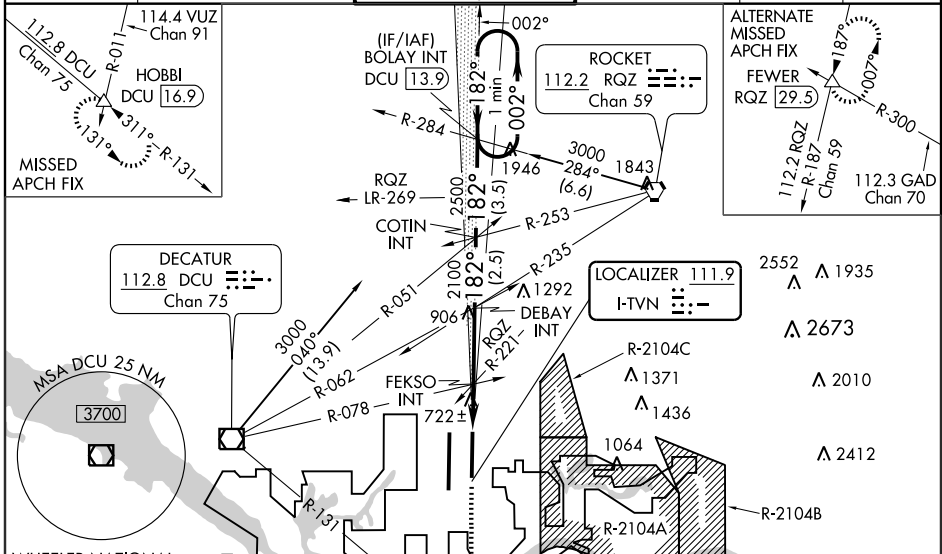
▼ When local altimeter setting not received, use Decatur altimeter setting and increase DA 834 and all MDA 40 feet, increase FEKSO fix minimums S-LOC 18L Cat C visibility to RVR 4000, and Cat E visibility to RVR 5000. For inoperative MALSRS increase S-ILS 18L Cat E visibility to RVR 4000 and S-LOC 18L Cat E visibility to 2; FEKSO fix minimums increase S-LOC 18L Cat E visibility to RVR 6000. For inoperative MALSRS when using Decatur altimeter setting, increase S-ILS 18L Cat E visibility to RVR 4000, S-LOC 18L Cat E visibility to 2; FEKSO fix minimums increase S-LOC 18L Cat E visibility to 1/2. Circling NA for Cat E east of Rwy 18L-36R.

****** RVR 1800 authorized with the use of FD or AP or HUD to DA. Simultaneous approach authorized with ILS or LOC Rwy 18R, ILS Rwy 18R (Cat II).

MALSRS

MISSED APPROACH:
Climb to 3000 via heading 182° and DCU VOR/DME R-131 to HOBBI INT/DCU 16.9 DME and hold.

| | | | | | |
|-----------------------|--|--|---------------------------------|---------------------------|-------------------------|
| ATIS 121.25 | HUNTSVILLE APP CON * 125.6 354.1 | HUNTSVILLE TOWER * 127.6 (CTAF) 350.35 | GND CON 121.9 269.525 | CLNC DEL 120.35 | UNICOM 122.95 |
|-----------------------|--|--|---------------------------------|---------------------------|-------------------------|



| CATEGORY | A | B | C | D | E |
|--------------------|------------------------|---------------|-------------------------------|----------------------------|-------------------------------|
| S-ILS 18L | **809/24 200 (200-1/2) | | | | 809/24 200 (200-1/2) |
| S-LOC 18L | 1160/24 | 551 (600-1/2) | 1160/50 551 (600-1) | 1160/60 551 (600-1 1/4) | 1160-1 1/2 551 (600-1 1/2) |
| CIRCLING | 1160-1 | 531 (600-1) | 1160-1 1/2 531 (600-1 1/2) | 1240-2 611 (700-2) | 1240-2 1/4 611 (700-2 1/4) |
| FEKSO FIX MINIMUMS | | | | | |
| S-LOC 18L | 980/24 | 371 (400-1/2) | 980/40 | 371 (400-3/4) | |
| CIRCLING | 1160-1 | 531 (600-1) | 1160-1 1/2 531 (600-1 1/2) | 1240-2 611 (700-2) | 1240-2 1/4 611 (700-2 1/4) |

SE-4, 31 MAY 2012 to 28 JUN 2012

SE-4, 31 MAY 2012 to 28 JUN 2012