

HOUSTON, TEXAS

AL-198 (FAA)

VOR/DME HUB <b>117.1</b> Chan <b>118</b>	APP CRS <b>325°</b>	Rwy Idg <b>7602</b> TDZE <b>43</b> Apt Elev <b>46</b>
--	------------------------	---

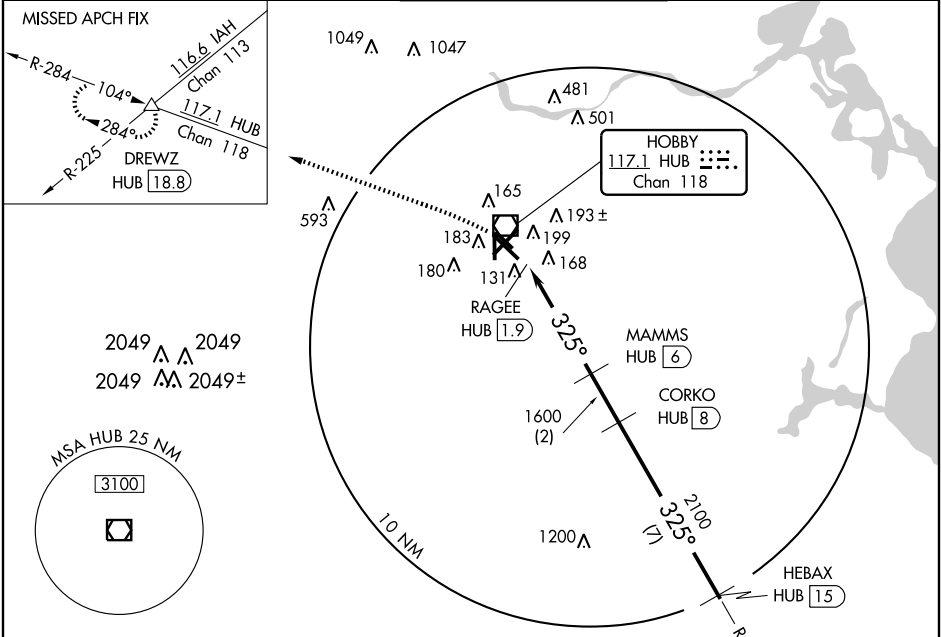
# VOR/DME RWY 30L

HOUSTON/ WILLIAM P. HOBBY (HOU)

**▽**  
**▲**

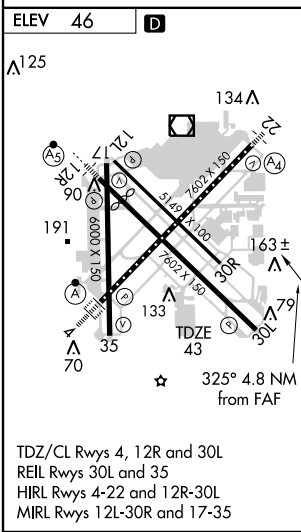
MISSED APPROACH: Climbing left turn to 2000 via HUB R-284 to DREWZ Int/HUB 18.8 DME and hold.

ATIS <b>124.6</b>	HOUSTON APP CON <b>120.05 379.1</b> EAST <b>124.35 316.15</b> WEST	HOBBY TOWER <b>118.7 256.9</b>	GND CON <b>121.9</b>	CLNC DEL <b>125.45</b>
----------------------	--	-----------------------------------	-------------------------	---------------------------

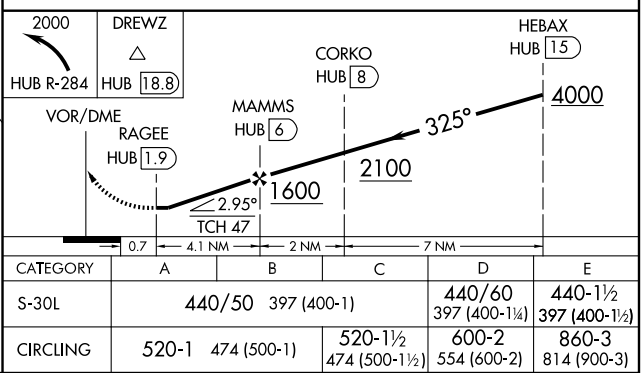


SC-5, 19 NOV 2009 to 17 DEC 2009

SC-5, 19 NOV 2009 to 17 DEC 2009



## RADAR REQUIRED



HOUSTON, TEXAS  
Amdt 17A 09071

29°39'N-95°17'W

# VOR/DME RWY 30L