

HOUSTON, TEXAS

AL-198 (FAA)

# VOR/DME RWY 4

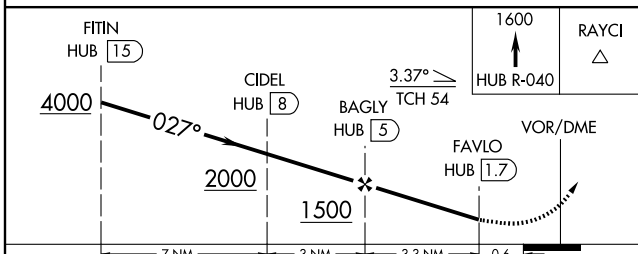
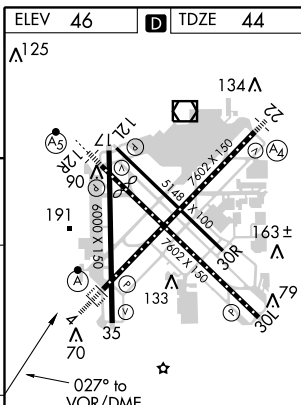
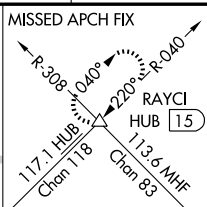
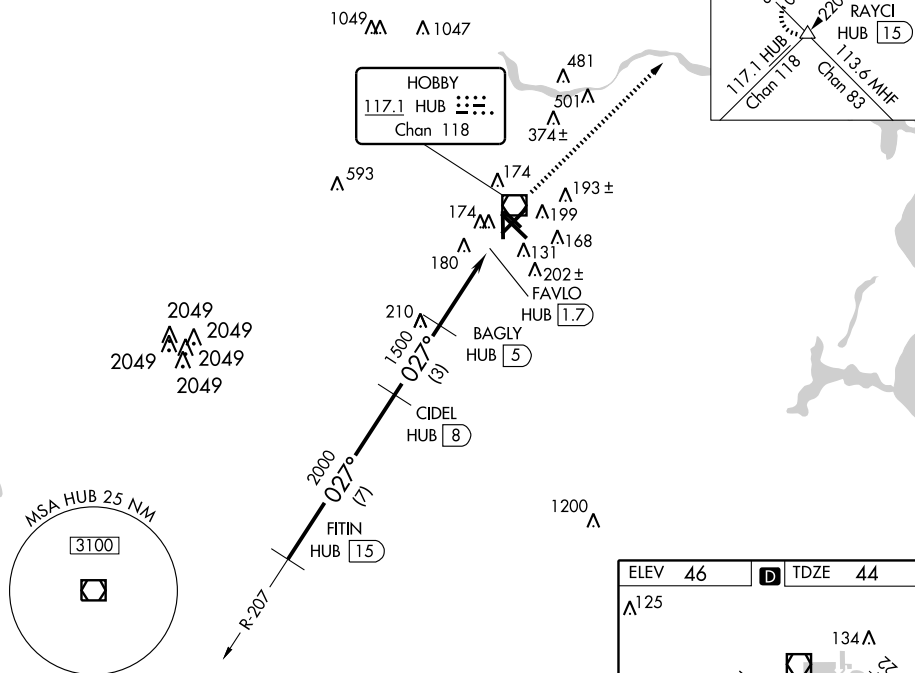
HOUSTON/ WILLIAM P. HOBBY (HOU)

VOR/DME HUB <b>117.1</b>	APP CRS <b>027°</b>	Rwy Idg <b>7602</b>
Chan <b>118</b>		TDZE <b>44</b>
		Apt Elev <b>46</b>

	For inoperative MALS/R, increase Cat D S-4 visibility to RVR 6000.	MISSED APPROACH: Climb to 1600 via HUB R-040 to RAYCI Int/HUB 15 DME and hold.

ATIS <b>124.6</b>	HOUSTON APP CON <b>120.05 379.1</b> EAST <b>124.35 316.15</b> WEST	HOBBY TOWER <b>118.7 256.9</b>	GND CON <b>121.9</b>	CLNC DEL <b>125.45</b>
----------------------	--	-----------------------------------	-------------------------	---------------------------

## RADAR REQUIRED



CATEGORY	A	B	C	D	
S-4	460/40 416 (500-¾)		460/50 416 (500-1)		TDZ/CL Rws 4, 12R and 30L REIL Rws 30L and 35
CIRCLING	520-1	474 (500-1)	520-1½ 474 (500-1½)	600-2 554 (600-2)	HIRL Rws 4-22 and 12R-30L MIRL Rws 12L-30R and 17-35

HOUSTON, TEXAS  
Amdt 18 12096

29°39'N-95°17'W

# HOUSTON/ WILLIAM P. HOBBY (HOU)

## VOR/DME RWY 4

SC-5, 31 MAY 2012 to 28 JUN 2012

SC-5, 31 MAY 2012 to 28 JUN 2012