

HOUSTON, TEXAS

AL-198 (FAA)

RNAV (GPS) RWY 35

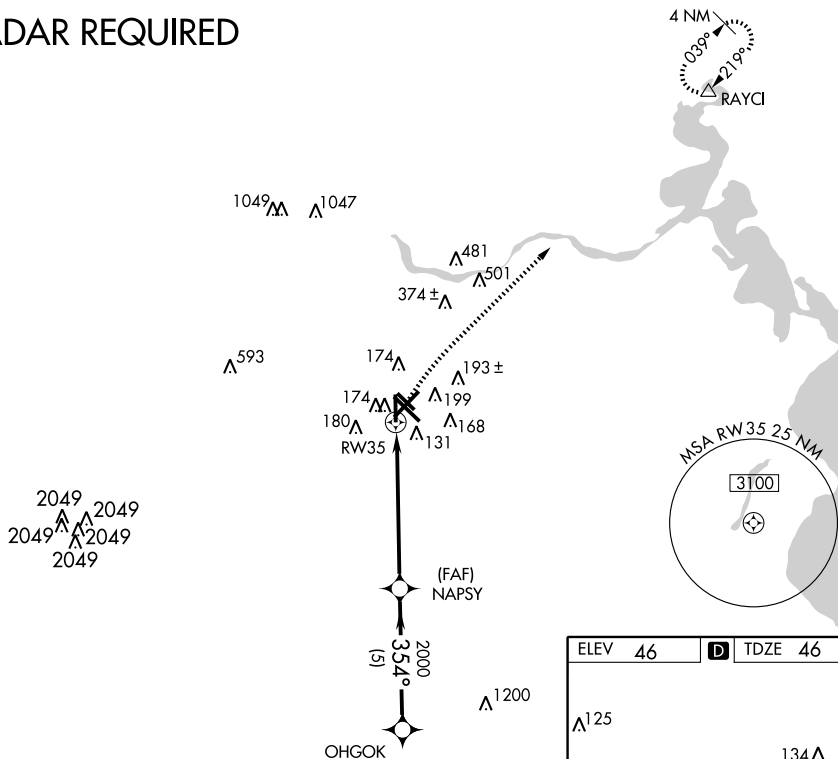
HOUSTON/WILLIAM P. HOBBY (HOU)

APP CRS 354°	Rwy Idg TDZE 46 Apt Elev 46
------------------------	---

▼ Baro-VNAV NA below -15°C (5°F).
 ▲ NA GPS or RNP-0.3 required. DME/DME RNP-0.3 NA. MISSED APPROACH: Climb to 1600 direct RAYCI and hold.

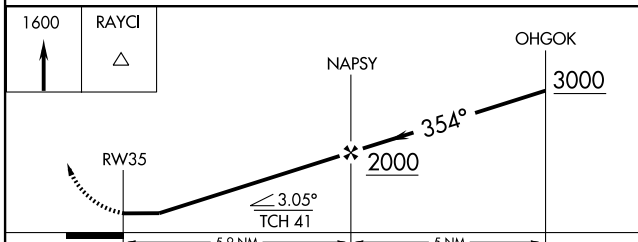
ATIS 124.6	HOUSTON APP CON 120.05 379.1 EAST 124.35 316.15 WEST	HOBBY TOWER 118.7 256.9	GND CON 121.9	CLNC DEL 125.45
----------------------	--	-----------------------------------	-------------------------	---------------------------

RADAR REQUIRED

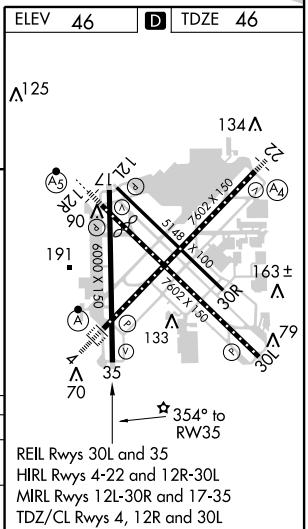


SC-5, 31 MAY 2012 to 28 JUN 2012

SC-5, 31 MAY 2012 to 28 JUN 2012



CATEGORY	A	B	C	D
LNNAV MDA	560-1	514 (600-1)	560-1½ 514 (600-1½)	560-1¾ 514 (600-1¾)
CIRCLING	560-1	514 (600-1)	560-1½ 514 (600-1½)	600-2 554 (600-2)



HOUSTON, TEXAS
Amdt 1 12096

29°39'N-95°17'W

HOUSTON/WILLIAM P. HOBBY (HOU) RNAV (GPS) RWY 35

REIL Rwy 30L and 35
HIRL Rwy 4-22 and 12R-30L
MIRL Rwy 12L-30R and 17-35
TDZ/CL Rwy 4, 12R and 30L