

HOUSTON, TEXAS

AL-198 (FAA)

WAAS CH 77510 W30A	APP CRS 309°	Rwy Idg 7602 TDZE 43 Apt Elev 46
--	------------------------	---

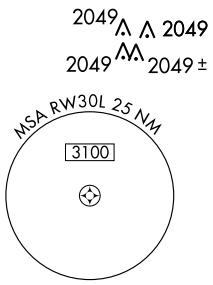
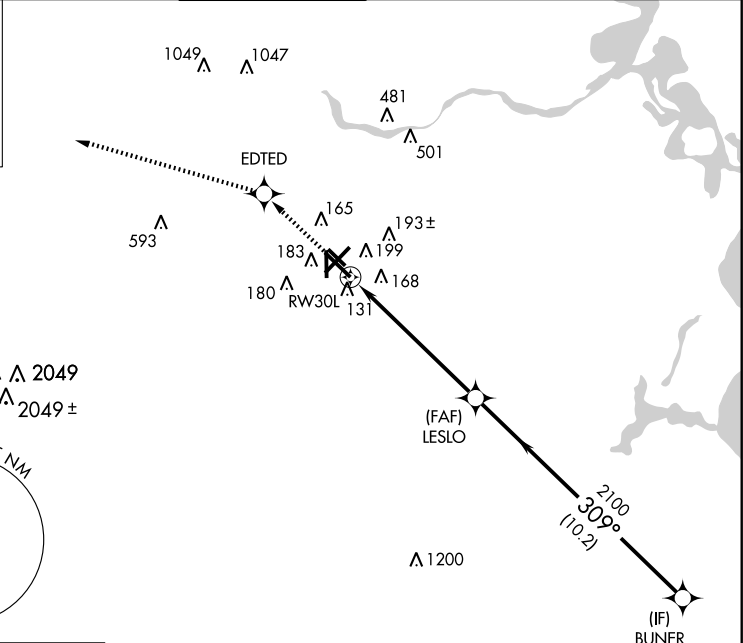
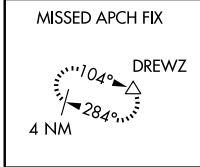
RNAV (GPS) RWY 30L

HOUSTON/ WILLIAM P. HOBBY (HOU)

▼ When VGSi inop, circling to Rwy 35 NA at night.
Baro-VNAV NA below -15° C (5° F).
DME/DME RNP-0.3 NA.

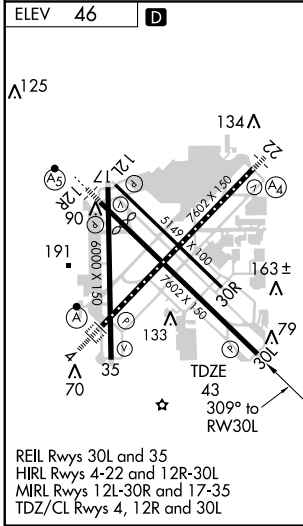
MISSED APPROACH: Climb to 2000 direct EDTED and via 281° track to DREWZ and hold.

ATIS 124.6	HOUSTON APP CON 120.05 379.1 EAST 124.35 316.15 WEST	HOBBY TOWER 118.7 256.9	GND CON 121.9	CLNC DEL 125.45
----------------------	--	--	-------------------------	---------------------------



SC-5, 19 NOV 2009 to 17 DEC 2009

SC-5, 19 NOV 2009 to 17 DEC 2009



RADAR REQUIRED

2000	EDTED	TRACK 281°	DREWZ	BUNER	
↑	◆	△	△	4000	
*LNAV only		*1.3 NM to RWY30L	LESLO	GS 3.00° TCH 47	
RWY30L		1.3 NM	4.9 NM	10.2 NM	
CATEGORY		A	B	C	D
LPV	DA	310/50		267 (300-1)	
LNAV/VNAV	DA	520-1¾		477 (500-1¾)	
LNAV	MDA	500/50	457 (500-1)	500/60 457 (500-1¼)	500-1½ 457 (500-1½)
CIRCLING		520-1¾	474 (500-1¾)		600-2 554 (600-2)

HOUSTON, TEXAS
Amdt 1 09071

29° 39'N-95° 17' W

RNAV (GPS) RWY 30L