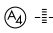


WAAS CH 65610 W22A	APP CRS 219°	Rwy ldg 7602 TDZE 41 Apt Elev 46
--	------------------------	---

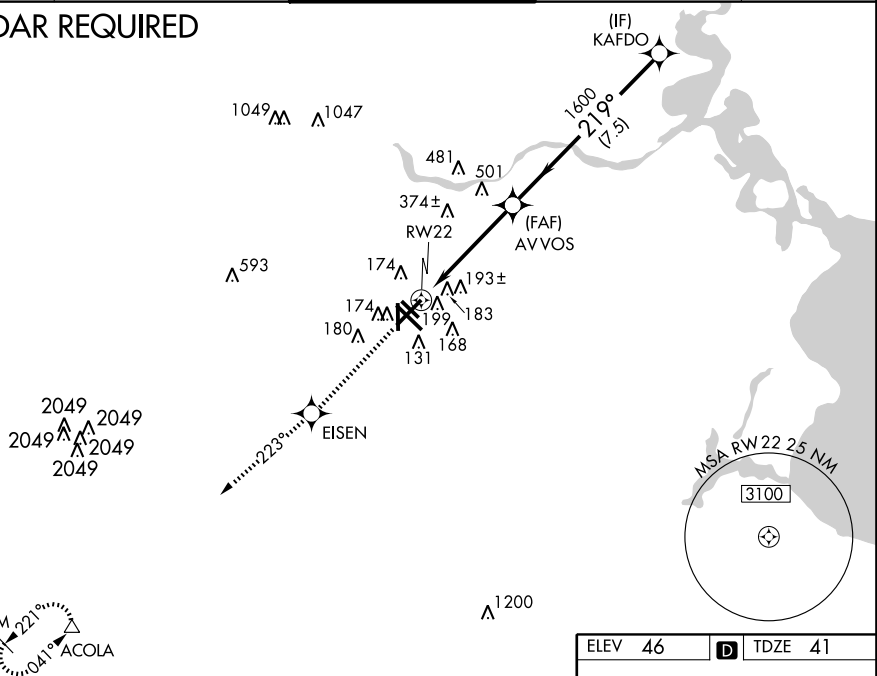
RNAV (GPS) RWY 22

HOUSTON/ WILLIAM P. HOBBY (HOU)

<p>▼ For uncompensated Baro-VNAV systems, LNAV/VNAV NA below -15°C (5°F) or above 48°C (118°F). DME/DME RNP -0.3 NA. ▲ Inoperative table does not apply to LPV, LNAV/VNAV all Cats, and LNAV Cat C.</p>	<p>MALS </p>	<p>MISSED APPROACH: Climb to 3000 direct EISEN and via 223° track to ACOLA and hold.</p>
---	--	--

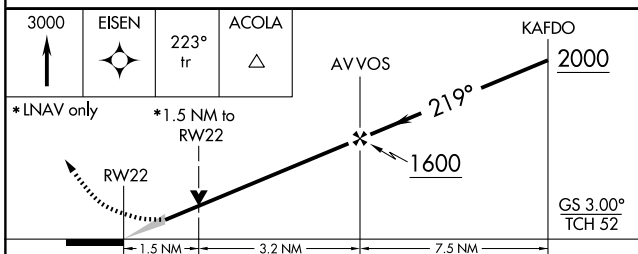
<p>ATIS 124.6</p>	<p>HOUSTON APP CON 120.05 379.1 EAST 124.35 316.15 WEST</p>	<p>HOBBY TOWER 118.7 256.9</p>	<p>GND CON 121.9</p>	<p>CLNC DEL 125.45</p>
------------------------------	---	---	---------------------------------	-----------------------------------

RADAR REQUIRED



SC-5, 31 MAY 2012 to 28 JUN 2012

SC-5, 31 MAY 2012 to 28 JUN 2012



CATEGORY	A	B	C	D	E
LPV DA	360-1		319 (400-1)		
LNAV/VNAV DA	480-1½		439 (500-1½)		
LNAV MDA	580-¾	539 (600-¾)	580-1½ 539 (600-1½)	580-1¾ 539 (600-1¾)	580-2 539 (600-2)
CIRCLING	580-1½ 534 (600-1½)		600-2 554 (600-2)		860-3 814 (900-3)

ELEV 46	TDZE 41
---------	---------

REIL Rwy 30L and 30R
HIRL Rwy 4-22 and 12R-30L
MIRL Rwy 12L-30R and 17-35
TDZ/CL Rwy 4, 12R and 30L