

RNAV (GPS) RWY 17

HOUSTON/ WILLIAM P. HOBBY (HOU)

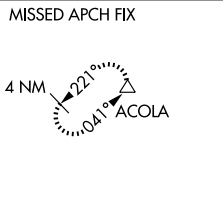
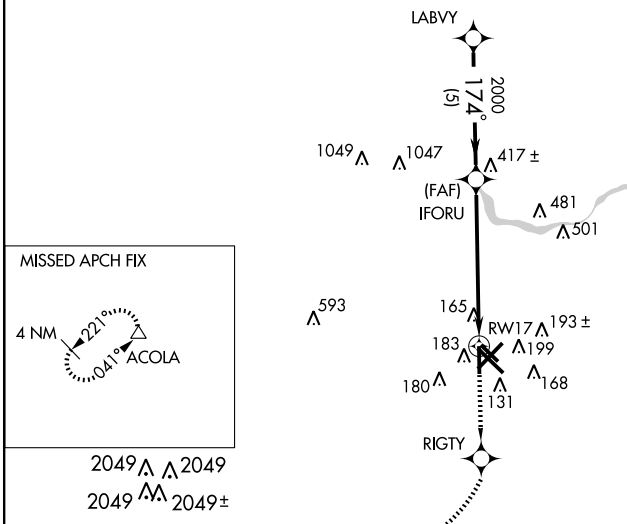
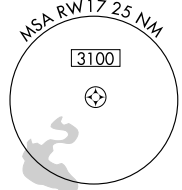
APP CRS 174°	Rwy Idg 6000
	TDZE 46
	Apt Elev 46

▽ Baro-VNAV NA below -15C° (5°F)
▲ NA GPS or RNP-0.3 required. DME/DME RNP-0.3 NA.

MISSED APPROACH: Climb to 3000 via course 174° to RIGTY then right turn via 232° to ACOLA and hold.

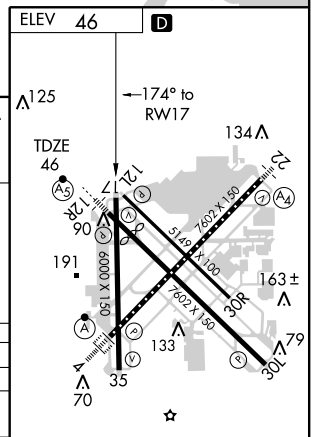
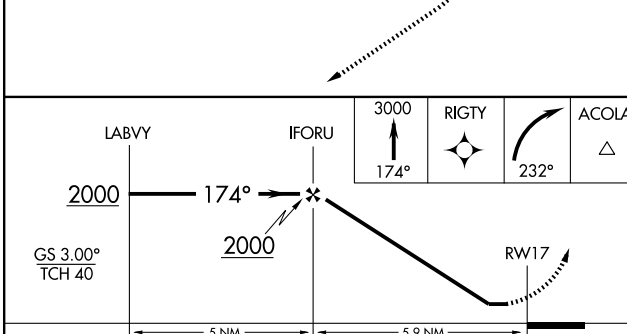
ATIS 124.6	HOUSTON APP CON 120.05 379.1 EAST 124.35 316.15 WEST	HOBBY TOWER 118.7 256.9	GND CON 121.9	CLNC DEL 125.45
----------------------	--	-----------------------------------	-------------------------	---------------------------

RADAR REQUIRED



SC-5, 19 NOV 2009 to 17 DEC 2009

SC-5, 19 NOV 2009 to 17 DEC 2009



CATEGORY	A	B	C	D
GLS PA DA	NA			
LNAV/VNAV DA	480-1½		434 (500-1½)	
LNAV MDA	580-1	534 (600-1)	580-1½ 534 (600-1½)	580-1¾ 534 (600-1¾)
CIRCLING	580-1½		534 (600-1½)	600-2 554 (600-2)

REIL Rwy 30L and 35R
 HIRL Rwy 4-22 and 12R-30L
 MIRL Rwy 12L-30R and 17-35
 TDZ/CL Rwy 4, 12R and 30L