

HOUSTON, TEXAS

AL-198 (FAA)

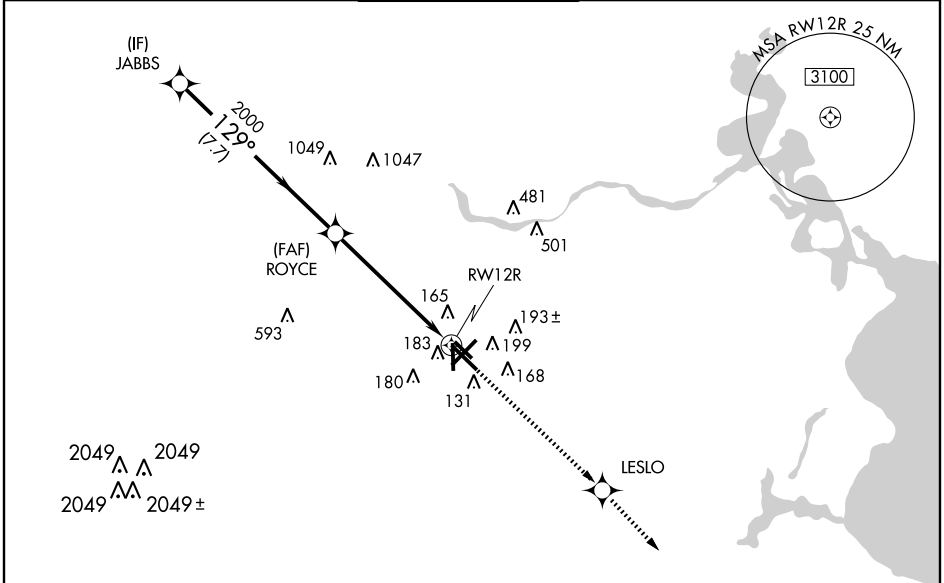
WAAS CH 70310 W12A	APP CRS 129°	Rwy Idg 6568 TDZE 46 Apt Elev 46
--	------------------------	---

RNAV (GPS) RWY 12R

HOUSTON/ WILLIAM P. HOBBY (HOU)

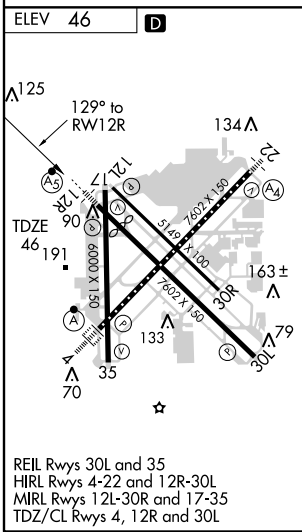
<p>▼ When VGSI inop, circling to RW35 NA at night; Baro-VNAV NA below -1.5° C (5° F); DME/DME RNP-0.3 NA; For inoperative MALS/R increase LPV visibility all Cats to RVR 5000, LNAV/VNAV Cat E visibility to 1½, and LNAV Cat A and B visibility to RVR 5000, Cat E to 1¼.</p>	<p>MALS </p>	<p>MISSED APPROACH: Climb to 2200 direct LESLO and via 132° track to VUH VORTAC.</p>
--	-------------------	--

<p>ATIS 124.6</p>	<p>HOUSTON APP CON 120.05 379.1 EAST 124.35 316.15 WEST</p>	<p>HOBBY TOWER 118.7 256.9</p>	<p>GND CON 121.9</p>	<p>CLNC DEL 125.45</p>
------------------------------	---	---	---------------------------------	-----------------------------------



SC-5, 19 NOV 2009 to 17 DEC 2009

SC-5, 19 NOV 2009 to 17 DEC 2009



RADAR REQUIRED

<p>MISSED APCH FIX SCHOLES VUH 113.0 Chan 77</p>		<p>2200 </p>	<p>LESLO </p>	<p>Track 132° </p>	<p>VUH 113.0</p>
<p>JABBS</p>		<p>ROYCE</p>		<p>*1.4 NM to RWY 12R *LNAV only</p>	
<p>2000</p>		<p>2000</p>		<p>7.7 NM</p>	
<p>GS 3.00° TCH 49</p>		<p>4.5 NM</p>		<p>1.4</p>	
CATEGORY	A	B	C	D	E
LPV DA		330/40	284 (300-¾)		
LNAV/VNAV DA		460/50	414 (500-1)		
LNAV MDA	540/40	494 (500-¾)	540/50 494 (500-1)	540/60 494 (500-1¼)	
CIRCLING	540-1½	494 (500-1½)	600-2 554 (600-2)	860-3 814 (900-3)	

HOUSTON, TEXAS
Amdt 1 09071

29° 39' N-95° 17' W

HOUSTON/ WILLIAM P. HOBBY (HOU)

RNAV (GPS) RWY 12R