

HOUSTON, TEXAS

AL-198 (FAA)

WAAS CH 86209 W04A	APP CRS 039°	Rwy Idg 7602 TDZE 44 Apt Elev 46
--	------------------------	---

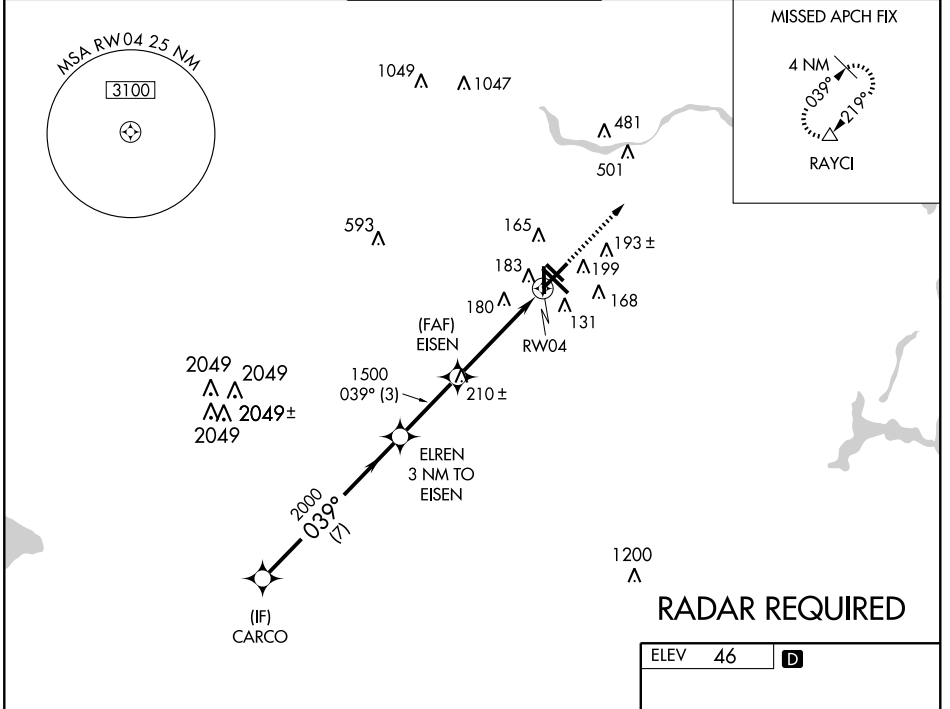
RNAV (GPS) RWY 4

HOUSTON/ WILLIAM P. HOBBY (HOU)

▼ For inoperative MALSR, increase LPV visibility to RVR 4000 all Cats, and increase LNAV/VNAV and LNAV Cat E visibility to 1½. When VGSi inop, circling Rwy 35 NA at night; Baro-VNAV NA below -15° C (5° F); DME/DME RNP-0.3 NA.

▲ MISSED APPROACH: Climb to 2000 direct RAYCI and hold.

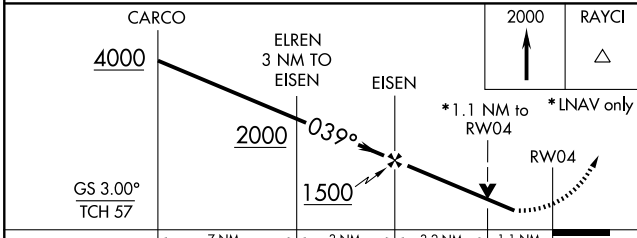
ATIS 124.6	HOUSTON APP CON 120.05 379.1 EAST 124.35 316.15 WEST	HOBBY TOWER 118.7 256.9	GND CON 121.9	CLNC DEL 125.45
----------------------	--	-----------------------------------	-------------------------	---------------------------



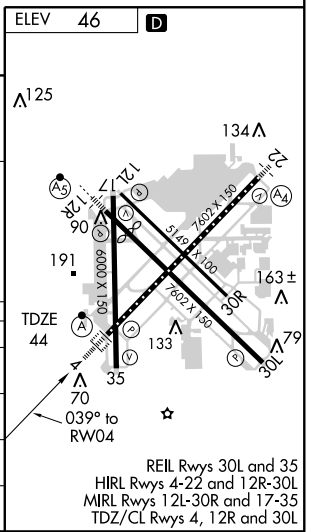
SC-5, 19 NOV 2009 to 17 DEC 2009

SC-5, 19 NOV 2009 to 17 DEC 2009

RADAR REQUIRED



CATEGORY	A	B	C	D	E
LPV DA	300/24 256 (300-½)				
LNAV/VNAV DA	440/40		396 (400-¾)		440/50 396 (400-1)
LNAV MDA	460/24	416 (500-½)	460/40 416 (500-¾)	460/50	416 (500-1)
CIRCLING	500-1¼	454 (500-1¼)	520-1½ 474 (500-1½)	600-2 554 (600-2)	860-3 814 (900-3)



HOUSTON, TEXAS
Amdt 2 09071

29°39'N-95°17'W

HOUSTON/ WILLIAM P. HOBBY (HOU)
RNAV (GPS) RWY 4