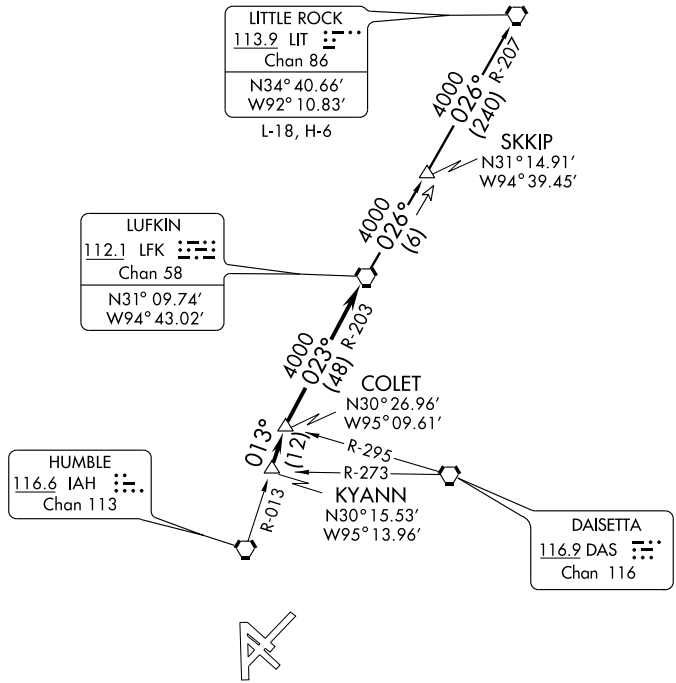


ATIS 124.6
CLNC DEL
125.45
GND CON
121.9
HOBBY TOWER
118.7 256.9
HOUSTON DEP CON
132.25 285.425



NOTE: Radar Required.
NOTE: For aircraft destined LIT, or overflying LIT or PVX.

TAKE-OFF MINIMUMS:
Rwy 4, 200-1 or standard with minimum climb of 270' per NM to 300.
Rwys 12L, 12R, 30L, 30R, 35, standard.
Rwy 17, 200-1 or standard with minimum climb of 827' per NM to 300.
Rwy 22, standard with a minimum climb of 290' per NM to 1500.

(NOTES ON FOLLOWING PAGE)

NOTE: Chart not to scale.



DEPARTURE ROUTE DESCRIPTION

Expect vectors to KYANN INT, maintain 5000', expect filed altitude 10 minutes after departure. Thence

. . . . via IAH R-013 to COLET INT, then right turn via LFK R-203 to LFK VORTAC.

LITTLE ROCK TRANSITION (LFK5.LIT): From over LFK VORTAC via LFK R-026 to SKKIP INT, then via LIT R-207 to LIT VORTAC.