


APP CRS	Rwy Idg	6595
050°	TDZE	516
	Apt Elev	540

RNAV (GPS) RWY 5


HOT SPRINGS/MEMORIAL FIELD (HOT)

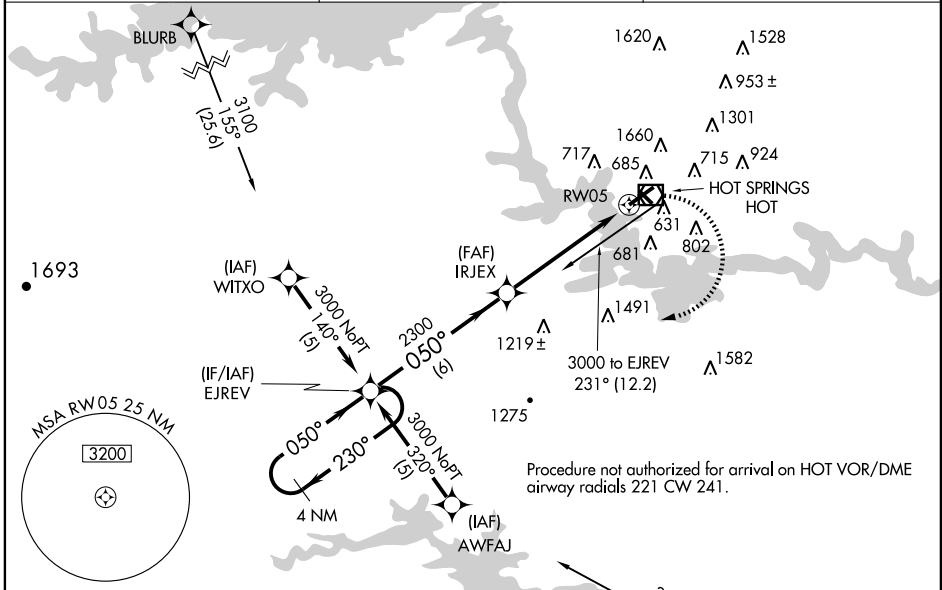
▼ DME/DME RNP-0.3 NA. Circling not authorized northwest of Rwy 5-23. For inoperative MALS, increase LNAV Cat D visibility to 1 1/4 mile. When local altimeter setting not received, use Adams Field altimeter setting and increase all MDA 160 feet, increase LNAV Cat C and D Visibility 1/4 mile and Circling Cat B visibility 1/4 mile, Cat C 3/4 mile and Cat D 1/2 mile. VDP NA with Adams Field altimeter setting. Circling to Rwy 31 NA at night.

MALS
 MISSED APPROACH: Climbing right turn to 3000 direct EJREV and hold.

ASOS
119.925

MEMPHIS CENTER
128.475 377.15

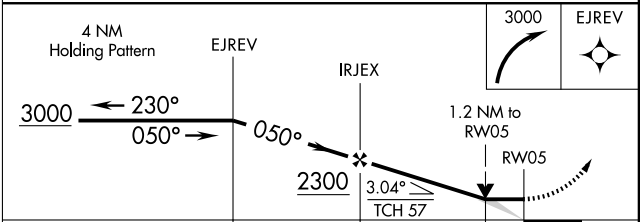
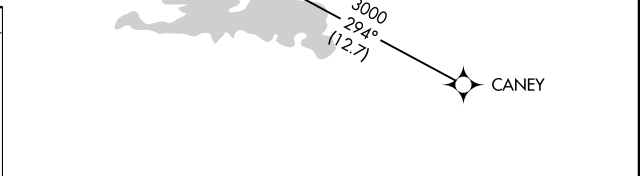
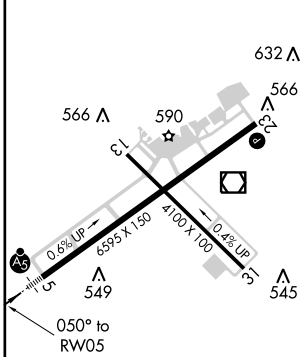
UNICOM
123.0 (CTAF) 



SC-1, 31 MAY 2012 to 28 JUN 2012

SC-1, 31 MAY 2012 to 28 JUN 2012

ELEV 540	D	TDZE 516
----------	----------	----------



CATEGORY	A	B	C	D
LNAV MDA	940-1/2	424 (400-1/2)	940-3/4 424 (400-3/4)	940-1 424 (400-1)
CIRCLING	1060-1 520 (600-1)	1140-1 600 (600-1)	1140-1 1/2 600 (600-1 1/2)	1140-2 600 (600-2)

HIRL Rwy 5-23 
 MIRL Rwy 13-31 
 REIL Rwy 13 