


| | | | |
|---|------------------------|-----------------------------|---|
| LOC I-HOT 111.5 Chan 52 | APP CRS 050° | Rwy Idg TDZE Apt Elev | 6595 516 540 |
|---|------------------------|-----------------------------|---|

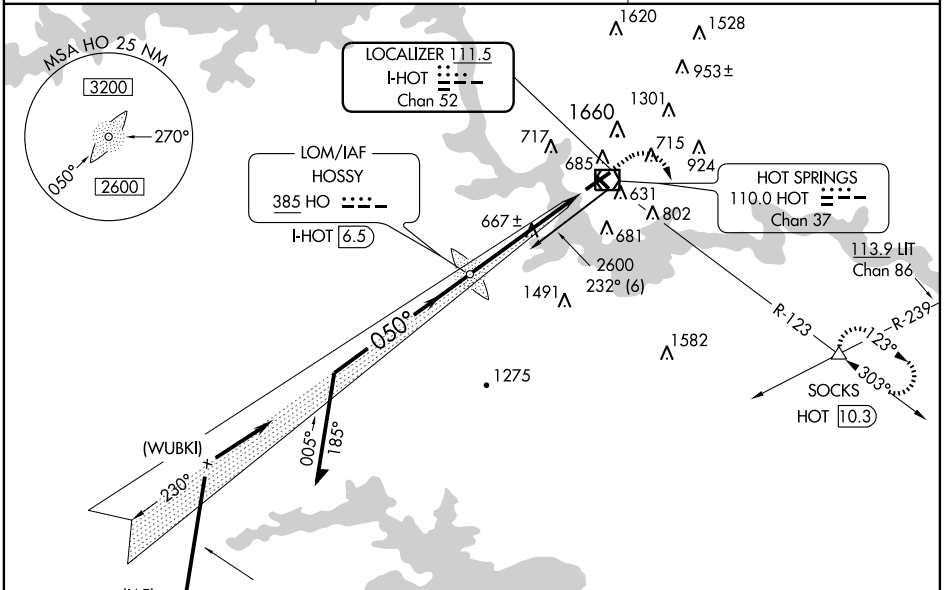
ILS or LOC RWY 5

HOT SPRINGS/MEMORIAL FIELD (HOT)

▼ Circling not authorized northwest of Rwy 5-23. Use I-HOT DME when on localizer course. When local altimeter setting not received, use Adams Field
▲ NA altimeter setting and increase DA 144 feet and all MDA 160 feet, increase S-ILS 5 all Cats visibility ¼ mile, S-LOC Cat C/D ¼ mile, and Circling Cat B ¼ mile, Cat C ¾ mile and Cat D ½ mile. VDP NA with Adams Field altimeter setting. Circling to Rwy 31 NA at night.

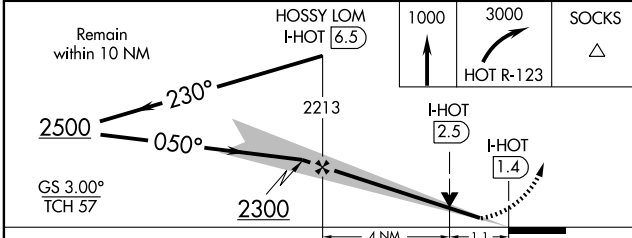
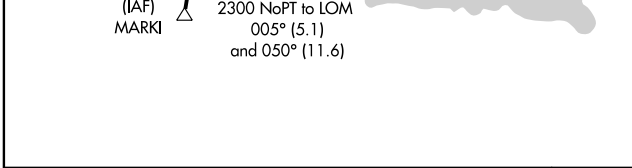
MALSR

MISSED APPROACH: Climb to 1000 then climbing right turn to 3000 via HOT R-123 to SOCKS Int/HOT 10.3 DME and hold.

| | | |
|-------------------------------|--|--------------------------------------|
| ASOS 119.925 | MEMPHIS CENTER 128.475 377.15 | UNICOM 123.0 (CTAF) |
|-------------------------------|--|--------------------------------------|

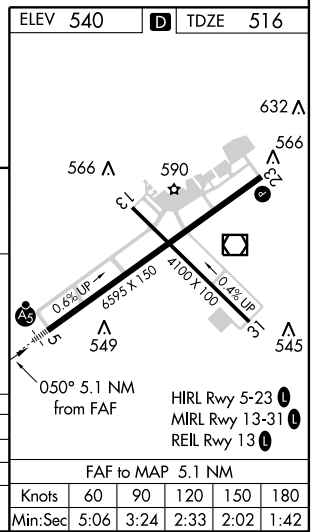


SC-1, 31 MAY 2012 to 28 JUN 2012

SC-1, 31 MAY 2012 to 28 JUN 2012



| | | | | |
|----------|-----------------------|-----------------------|-------------------------|-----------------------|
| CATEGORY | A | B | C | D |
| S-ILS 5 | 716-½ 200 (200-½) | | | |
| S-LOC 5 | 940-½ | 424 (400-½) | 940-¾ | 424 (400-¾) |
| CIRCLING | 1060-1 520 (600-1) | 1140-1 600 (600-1) | 1140-1½ 600 (600-1½) | 1140-2 600 (600-2) |



| | | | | | |
|-------------------|------|------|------|------|------|
| FAF to MAP 5.1 NM | | | | | |
| Knots | 60 | 90 | 120 | 150 | 180 |
| Min:Sec | 5:06 | 3:24 | 2:33 | 2:02 | 1:42 |