


VORTAC HON	APP CRS	Rwy Idg	7201
117.6	124°	TDZE	1289
Chan 123		Apt Elev	1289

# VOR RWY 12

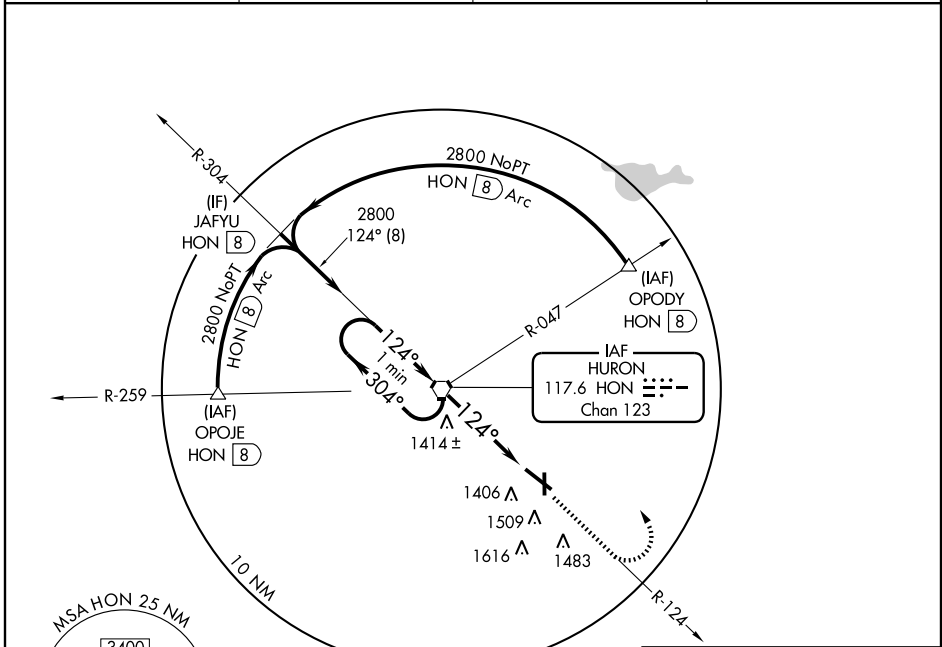
HURON RGNL (HON)

**⚠** When local altimeter setting not received, use Mitchell Muni altimeter setting and increase all MDA 100 feet, increase S-12 Cat C visibility ¼ mile and circling Cats C and D ¼ mile. For inoperative MALS/R increase S-12 Cat D visibility 1¼ mile. VDP NA when using Mitchell Muni altimeter setting.

**MALS/R** 

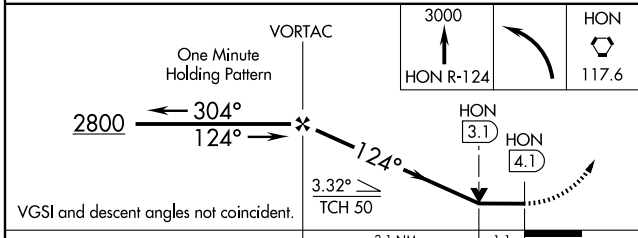
**MISSED APPROACH:** Climb to 3000 via HON VORTAC R-124 then left turn direct HON VORTAC and hold.

ASOS <b>118,125</b>	MINNEAPOLIS CENTER <b>126.25 339.8</b>	HURON RADIO <b>123.6 (CTAF)</b>	UNICOM <b>123.0</b>
------------------------	---	------------------------------------	------------------------



NC-1, 31 MAY 2012 to 28 JUN 2012

NC-1, 31 MAY 2012 to 28 JUN 2012



CATEGORY	A	B	C	D
S-12	1680-1/2	391 (400-1/2)		1680-1 391 (400-1)
CIRCLING	1820-1	531 (600-1)	1820-1 1/2 531 (600-1 1/2)	1980-2 1/4 691 (700-2 1/4)

ELEV 1289 <b>D</b>				
124° 4.1 NM from FAF				
TDZE 1289				
HIRL Rwy 12-30 <b>L</b>				
MIRL Rwy 17-35 <b>L</b>				
REIL Rwy 17, 30 and 35 <b>L</b>				
FAF to MAP 4.1 NM				
Knots	60	90	120	150 180
Min:Sec	4:06	2:44	2:03	1:38 1:22