

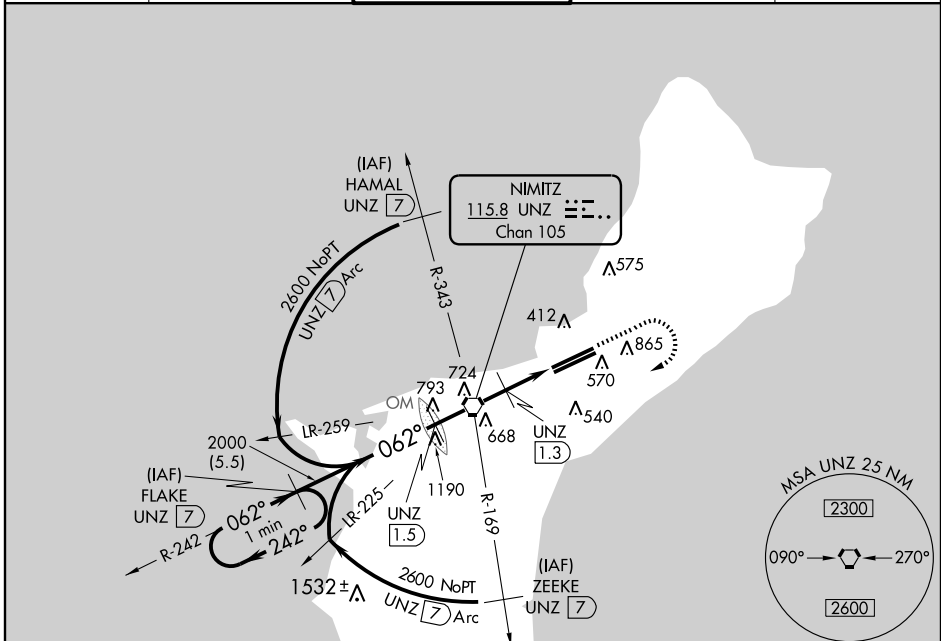
VORTAC UNZ 115.8 Chan 105	APP CRS 062°	Rwy Idg 10015 TDZE 256 Apt Elev 298
---	------------------------	--

VOR/DME or TACAN RWY 6L

GUAM INTL (GUM)(PGUM)

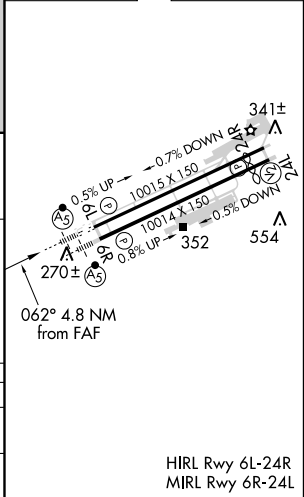
Circling NA southeast of Rwy 6R-24L. DME from UNZ VORTAC.	MALSR	MISSED APPROACH: Climb to 2600 then right turn via UNZ R-242 to FLAKE/7 DME and hold.		
		ATIS 119.0	GUAM CERAP 119.8 269.0	AGANA TOWER 118.1 340.2

ATIS 119.0	GUAM CERAP 119.8 269.0	AGANA TOWER 118.1 340.2	GND CON 121.9 336.4	CLNC DEL 121.9
----------------------	----------------------------------	-----------------------------------	-------------------------------	--------------------------



ELEV 298	TDZE 256
----------	----------

One Minute Holding Pattern 2600 ← 242° / 062° → 062° → 2000 VGS1 and descent angles not coincident (VGS1 Angle 3.00°/TCH 68). 5.5 NM 2.8 NM 1.2 NM 0.8 NM	FLAKE UNZ 7 UNZ 1.5 UNZ VORTAC UNZ 1.3 UNZ 2.5 TCH 68 1040	2600 UNZ R-242 FLAKE UNZ 7		
CATEGORY A B C D	S-6L 760-1/2 504 (500-1/2) 760-1 504 (500-1)			
CIRCLING	760-1 462 (500-1)		760-1/2 860-2 462 (500-1/2) 562 (600-2)	



PAC, 31 MAY 2012 to 26 JUL 2012

PAC, 31 MAY 2012 to 26 JUL 2012