

RNAV (RNP) Z RWY 24R

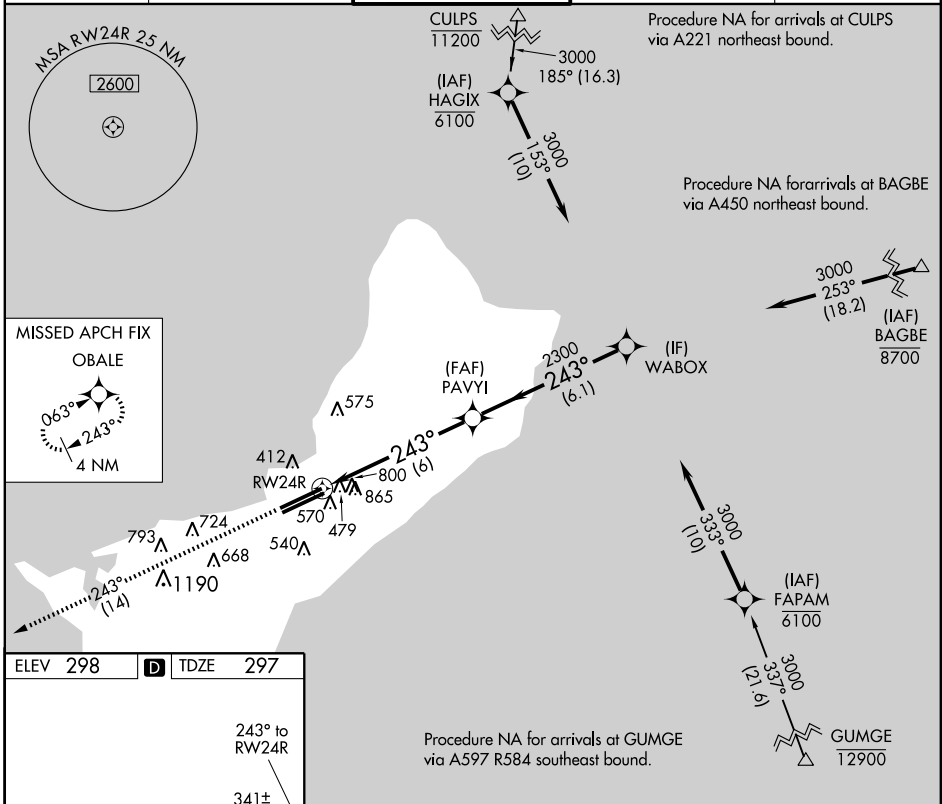
GUAM INTL (GUM)(PGUM)

APP CRS 243°	Rwy Idg 10015
	TDZE 297
	Apt Elev 298

⚠ For uncompensated Baro-VNAV systems, procedure NA below 19°C (66°F) or above 48°C (119°F). GPS required. When VGSI inoperative, procedure NA at night.

MISSED APPROACH: Climb to 3000 via track 243° to OBALE and hold.

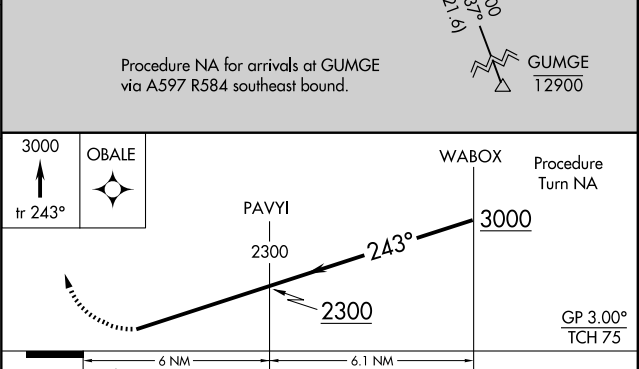
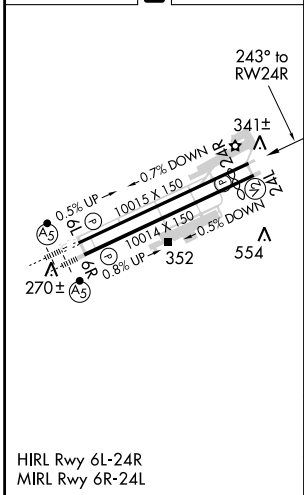
ATIS 119.0	GUAM CERAP 119.8 269.0	AGANA TOWER 118.1 340.2	GND CON 121.9 336.4	CLNC DEL 121.9
----------------------	----------------------------------	-----------------------------------	-------------------------------	--------------------------



PAC, 31 MAY 2012 to 26 JUL 2012

PAC, 31 MAY 2012 to 26 JUL 2012

ELEV 298	D	TDZE 297
----------	----------	----------



CATEGORY	A	B	C	D
RNP 0.24 DA		1117-2¾	820 (900-2¾)	
RNP 0.30 DA		1140-3	843 (900-3)	

AUTHORIZATION REQUIRED