

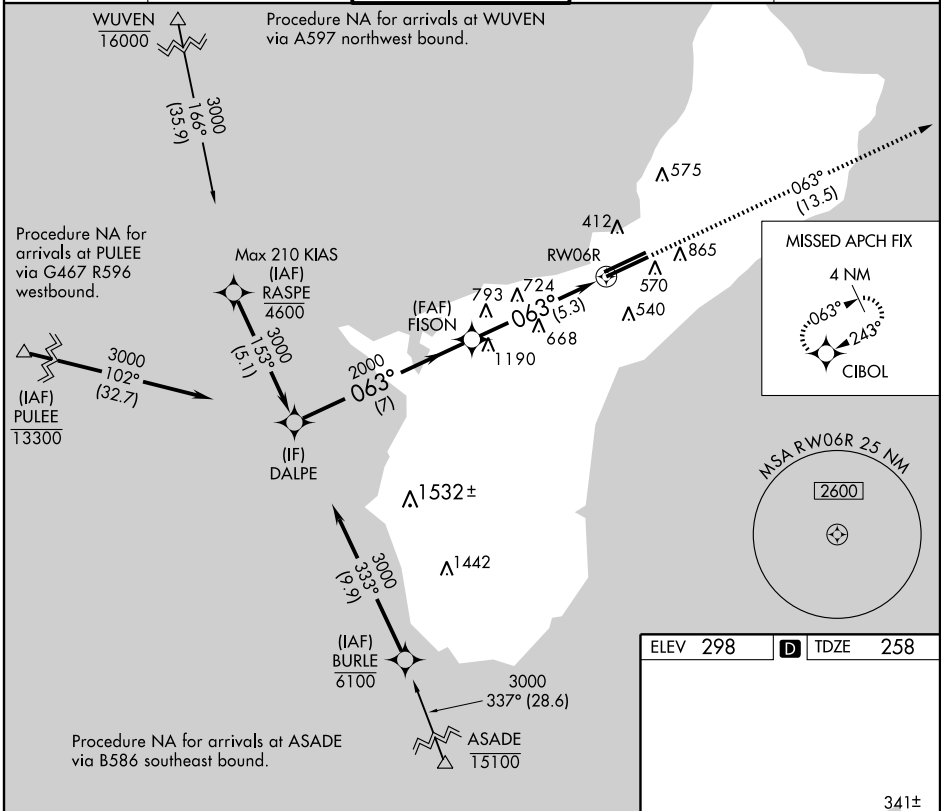
APP CRS	Rwy Idg	<b>10014</b>
<b>063°</b>	TDZE	<b>258</b>
	Apt Elev	<b>298</b>

# RNAV (RNP) Z RWY 6R

GUAM INTL (GUM)(PGUM)

For uncompensated Baro-VNAV systems, procedure NA below 19°C (66°F) or above 48°C (119°F). GPS required. *Missed approach requires a minimum climb of 285 feet per NM to 1400.	MALSR 	MISSED APPROACH: Climb to 3000 via track 063° to CIBOL and hold.

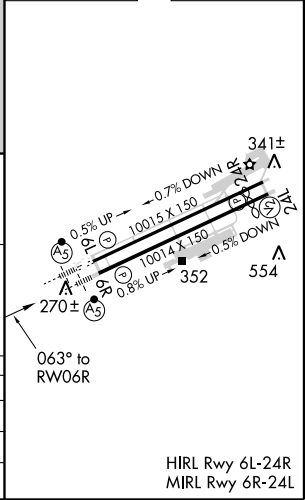
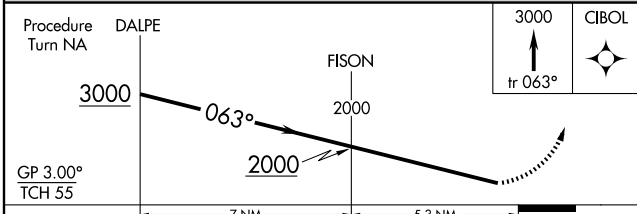
ATIS <b>119.0</b>	GUAM CERAP <b>119.8 269.0</b>	AGANA TOWER <b>118.1 340.2</b>	GND CON <b>121.9 336.4</b>	CLNC DEL <b>121.9</b>
----------------------	----------------------------------	-----------------------------------	-------------------------------	--------------------------



PAC, 31 MAY 2012 to 26 JUL 2012

PAC, 31 MAY 2012 to 26 JUL 2012

ELEV 298	<b>D</b> TDZE 258
----------	-------------------



CATEGORY	A	B	C	D
RNP 0.30* DA		508-1/2	250 (300-1/2)	
RNP 0.30 DA		656-1	398 (400-1)	

**AUTHORIZATION REQUIRED**