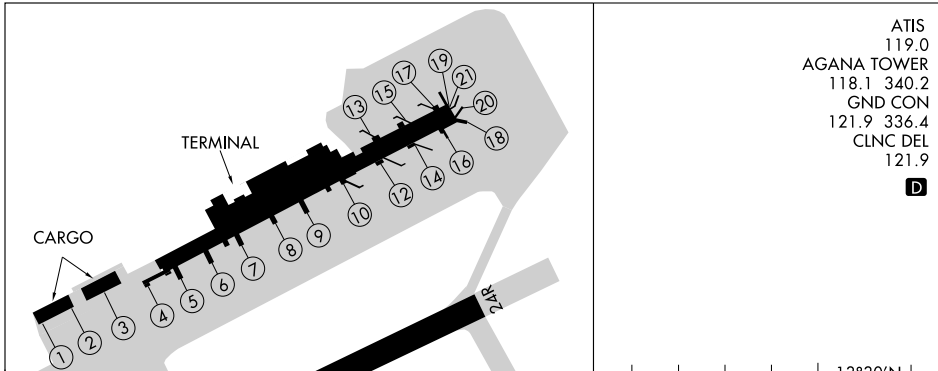


AIRPORT DIAGRAM

AL-2146 (FAA)

GUAM INTL (GUM)(PGUM)
GUAM, GQ



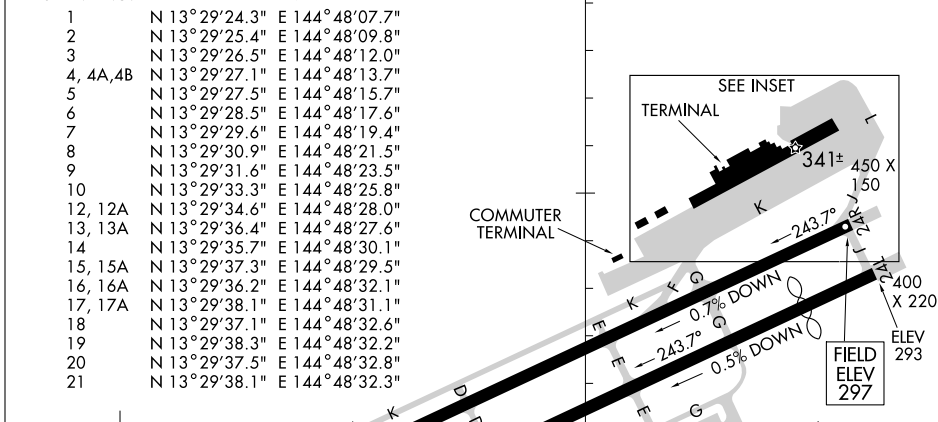
ATIS
119.0
AGANA TOWER
118.1 340.2
GND CON
121.9 336.4
CLNC DEL
121.9

D

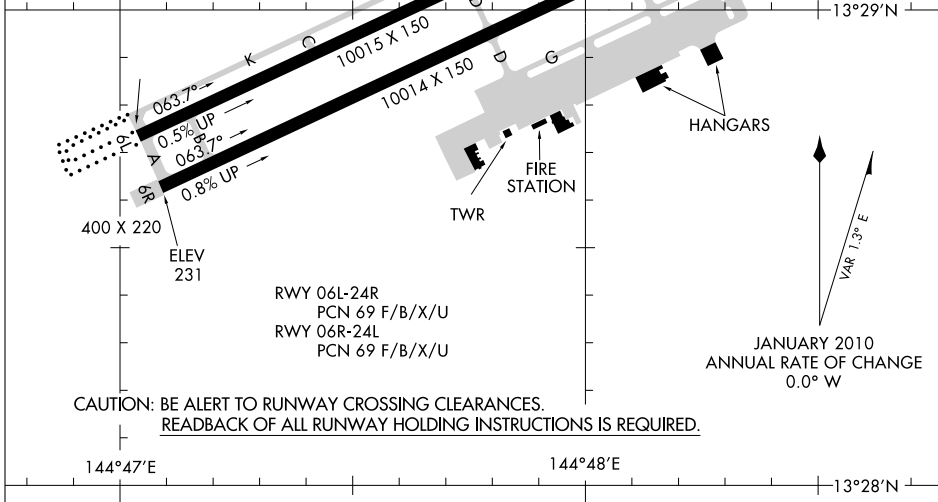
PARKING STAND POSITIONS

STAND NO.	COORDINATES	
1	N 13° 29' 24.3"	E 144° 48' 07.7"
2	N 13° 29' 25.4"	E 144° 48' 09.8"
3	N 13° 29' 26.5"	E 144° 48' 12.0"
4, 4A, 4B	N 13° 29' 27.1"	E 144° 48' 13.7"
5	N 13° 29' 27.5"	E 144° 48' 15.7"
6	N 13° 29' 28.5"	E 144° 48' 17.6"
7	N 13° 29' 29.6"	E 144° 48' 19.4"
8	N 13° 29' 30.9"	E 144° 48' 21.5"
9	N 13° 29' 31.6"	E 144° 48' 23.5"
10	N 13° 29' 33.3"	E 144° 48' 25.8"
12, 12A	N 13° 29' 34.6"	E 144° 48' 28.0"
13, 13A	N 13° 29' 36.4"	E 144° 48' 27.6"
14	N 13° 29' 35.7"	E 144° 48' 30.1"
15, 15A	N 13° 29' 37.3"	E 144° 48' 29.5"
16, 16A	N 13° 29' 36.2"	E 144° 48' 32.1"
17, 17A	N 13° 29' 38.1"	E 144° 48' 31.1"
18	N 13° 29' 37.1"	E 144° 48' 32.6"
19	N 13° 29' 38.3"	E 144° 48' 32.2"
20	N 13° 29' 37.5"	E 144° 48' 32.8"
21	N 13° 29' 38.1"	E 144° 48' 32.3"

PAC, 31 MAY 2012 to 26 JUL 2012



PAC, 31 MAY 2012 to 26 JUL 2012



CAUTION: BE ALERT TO RUNWAY CROSSING CLEARANCES.
READBACK OF ALL RUNWAY HOLDING INSTRUCTIONS IS REQUIRED.

AIRPORT DIAGRAM

GUAM, GQ
GUAM INTL (GUM)(PGUM)