

RNAV (GPS) RWY 22

GREER/ GREENVILLE-SPARTANBURG INTL-ROGER MILLIKEN (GSP)

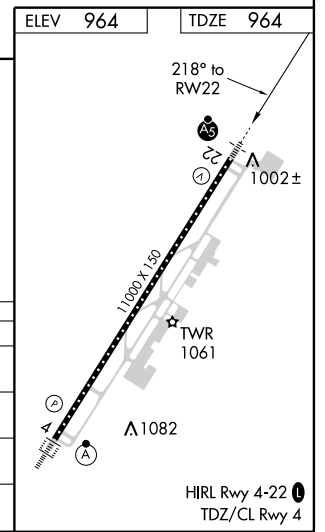
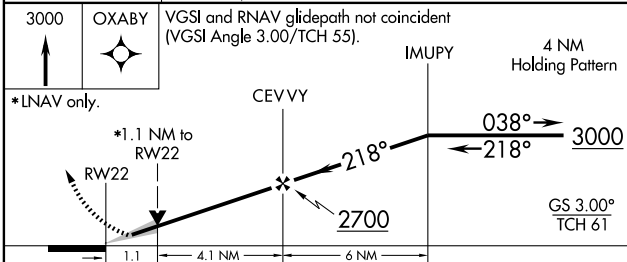
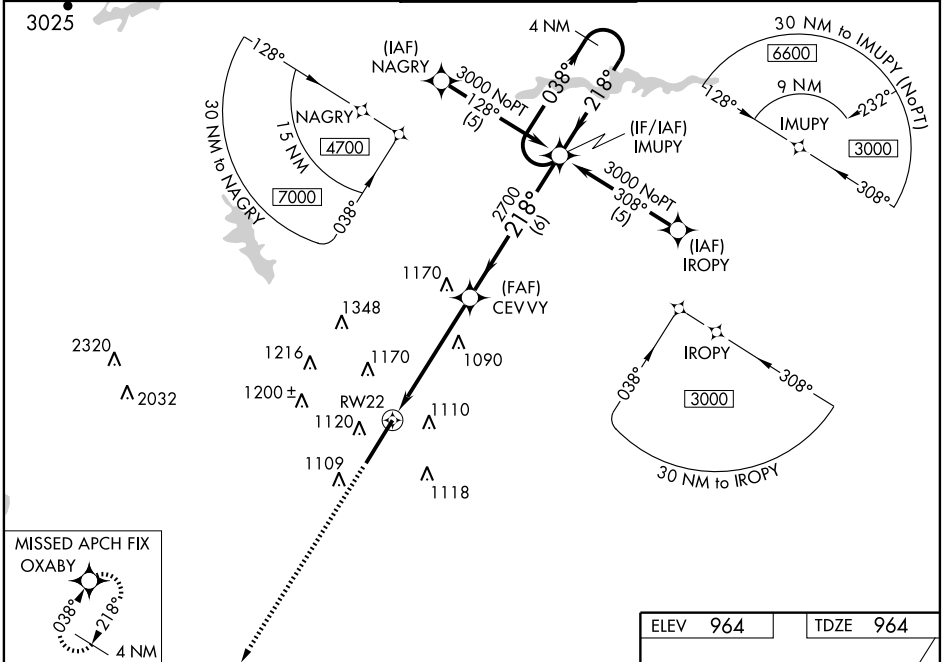
WAAS CH 99602 W22A	APP CRS 218°	Rwy Idg 11000 TDZE 964 Apt Elev 964
--	------------------------	--

⚠ If local altimeter setting not received, use Greenville Downtown altimeter setting and increase all DAs/MDAs 40 feet. VDP and Baro-VNAV NA when using Greenville Downtown altimeter setting. For uncompensated Baro-VNAV systems, LNAV/VNAV NA below -16°C (4°F) or above 47°C (116°F). DME/DME RNP-0.3 NA. For inoperative MALS, increase LNAV Cat D visibility to RVR 6000.

MALS

MISSED APPROACH: Climb to 3000 direct OXABY and hold.

ATIS 134.25	GREER APP CON* 118.8 385.4	GREER TOWER* 120.1 (CTAF) 257.8	GND CON 121.9	UNICOM 122.95
-----------------------	--------------------------------------	--	-------------------------	-------------------------



CATEGORY	A	B	C	D
LPV DA		1164/24	200 (200-½)	
LNAV/VNAV DA		1367/40	403 (500-¾)	
LNAV MDA	1360/24	396 (400-½)		1360/50 396 (400-1)
CIRCLING	1420-1	456 (500-1)	1420-1½ 456 (500-1½)	1520-2 556 (600-2)

RNAV (GPS) RWY 22

SE-2, 31 MAY 2012 to 28 JUN 2012

SE-2, 31 MAY 2012 to 28 JUN 2012