

WAAS CH <b>78103</b> <b>W04A</b>	APP CRS <b>038°</b>	Rwy Idg THRE <b>941</b> Apt Elev <b>964</b>	<b>11000</b> <b>941</b> <b>964</b>
--	------------------------	---	--

# RNAV (GPS) RWY 4

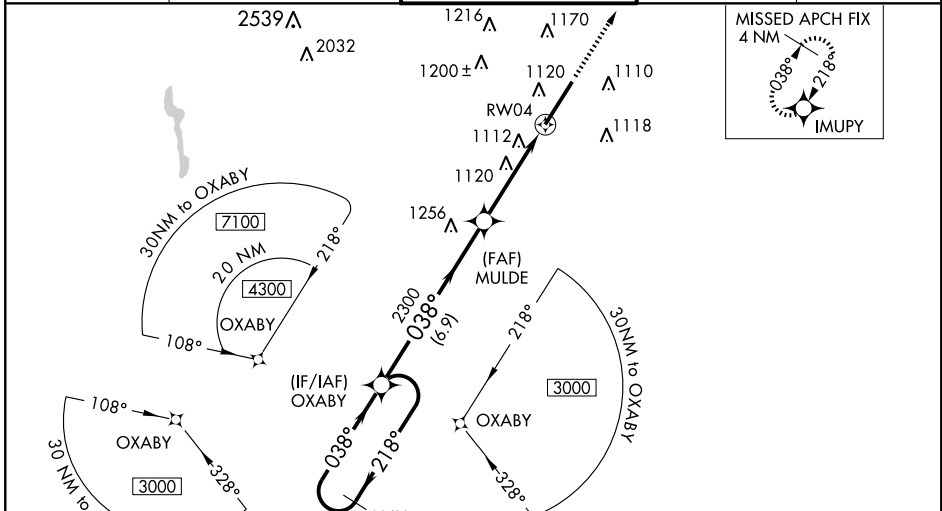
GREER/ GREENVILLE-SPARTANBURG INTL-ROGER MILLIKEN (GSP)

**ASR** Baro-VNAV NA when using Greenville Downtown altimeter setting. For uncompensated Baro-VNAV systems, LNAV/VNAV NA below -16°C (4°F) or above 38°C (100°F). DME/DME RNP-0.3 NA. VDP NA with Greenville Downtown altimeter setting. When local altimeter setting not received, use Greenville Downtown altimeter setting: increase all DA 29 feet and all MDA 40 feet; increase LNAV Cats C and D visibility to RVR 5000. For inoperative ALSF-2, increase LNAV/VNAV all Cats visibility to 1½ miles; LNAV Cats A and B visibility to RVR 5500 and LNAV Cats C and D visibility to 1¾ miles. For inoperative ALSF-2, when using Greenville Downtown altimeter setting, increase LNAV/VNAV all Cats visibility to 1¾ miles.

**ALSF-2**

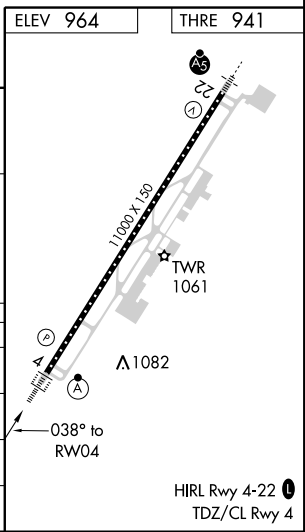
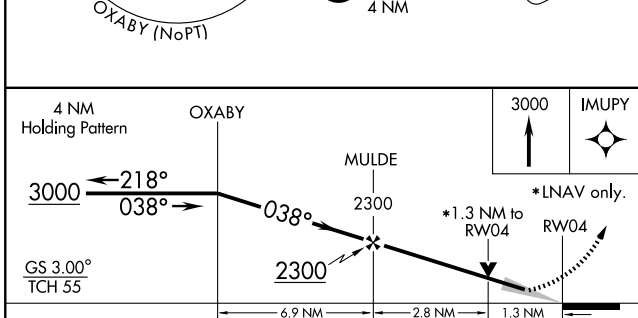
**MISSED APPROACH:**  
Climb to 3000 direct IMUPY and hold.

ATIS <b>134.25</b>	GREER APP CON* <b>118.8 385.4</b>	GREER TOWER* <b>120.1(CTAF) 257.8</b>	GND CON <b>121.9</b>	UNICOM <b>122.95</b>
-----------------------	--------------------------------------	--	-------------------------	-------------------------



SE-2, 31 MAY 2012 to 28 JUN 2012

SE-2, 31 MAY 2012 to 28 JUN 2012



CATEGORY	A	B	C	D
LPV DA		1141/24	200 (200-½)	
LNAV/VNAV DA		1401/60	460 (500-1¼)	
LNAV MDA	1400/24	459 (500-½)	1400/45	459 (500-¾)
CIRCLING	1420-1	456 (500-1)	1420-1½ 456 (500-1½)	1520-2 556 (600-2)

# RNAV (GPS) RWY 4