

WAAS CH 86713 W 26B	APP CRS 265°	Rwy Idg 10000 TDZE 790 Apt Elev 794
---	------------------------	--

RNAV (GPS) RWY 26L

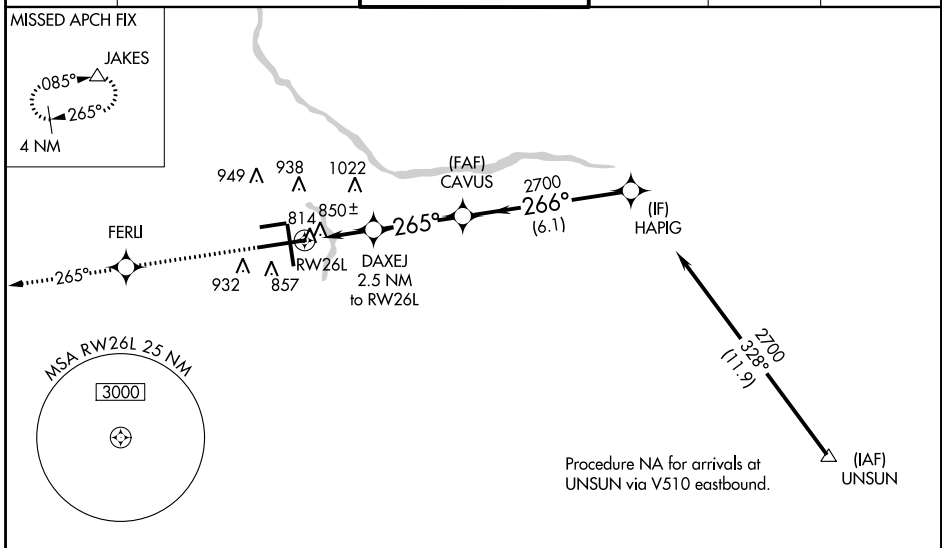
GERALD R FORD INTL (G.R.R.)

ASR For uncompensated Baro-VNAV systems, LNAV/VNAV NA below -16°C (4°F) or above 47°C (116°F). DME/DME RNP-0.3 NA. VDP and Baro-VNAV NA when using Holland altimeter setting. When local altimeter setting not received, use Holland altimeter setting and increase all DA 76 feet and all MDA 80 feet, LNAV/VNAV Cats A/B/C visibility to RVR 4000, LNAV Cat C to RVR 5000, Cat D to RVR 6000. For inoperative MALSR, increase LNAV/VNAV Cat D visibility to RVR 5000. For inoperative MALSR when using Holland altimeter setting, increase LPV all Cats visibility to RVR 5000.

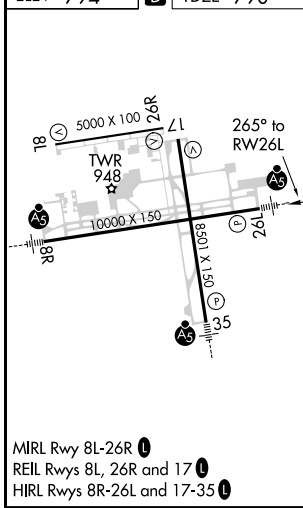
MALSR

MISSED APPROACH:
Climb to 2700 direct FERLI and via 265° track to JAKES and hold.

ATIS 118.725	GRAND RAPIDS APP CON* 128.4 257.6	GRAND RAPIDS TOWER* 135.65 (CTAF) 339.8	GND CON 121.8	CLNC DEL 119.3	UNICOM 122.95
------------------------	---	---	-------------------------	--------------------------	-------------------------



ELEV 794	D	TDZE 790
----------	----------	----------



2700	FERLI	JAKES	VGSi and RNAV glidepath not coincident (VGSi Angle 3.00/TCH 73).		Procedure Turn NA
↑	✧	△	DAXEJ 2.5 NM to RW26L	CAVUS	HAPIG
*LNAV only			*1.3 NM to RW26L	2700	GP 3.00° TCH 55
RW26L			*1640	2700	
1.3 NM			1.2 NM	3.2 NM	6.1 NM
CATEGORY	A	B	C	D	
LPV DA	990/24 200 (200-½)				
LNAV/VNAV DA	1114/24 324 (400-½)			1114/40 324 (400-¾)	
LNAV MDA	1280/24	490 (500-½)	1280/40 490 (500-¾)	1280/50 490 (500-1)	
CIRCLING	1280-1	486 (500-1)	1280-1½ 486 (500-1½)	1360-2 566 (600-2)	

EC-1, 27 APR 2017 to 25 MAY 2017

EC-1, 27 APR 2017 to 25 MAY 2017