

WAAS CH <b>40113</b> <b>W08B</b>	APP CRS <b>087°</b>	Rwy Idg <b>10000</b> TDZE <b>794</b> Apt Elev <b>794</b>
--	------------------------	--

# RNAV (GPS) RWY 8R

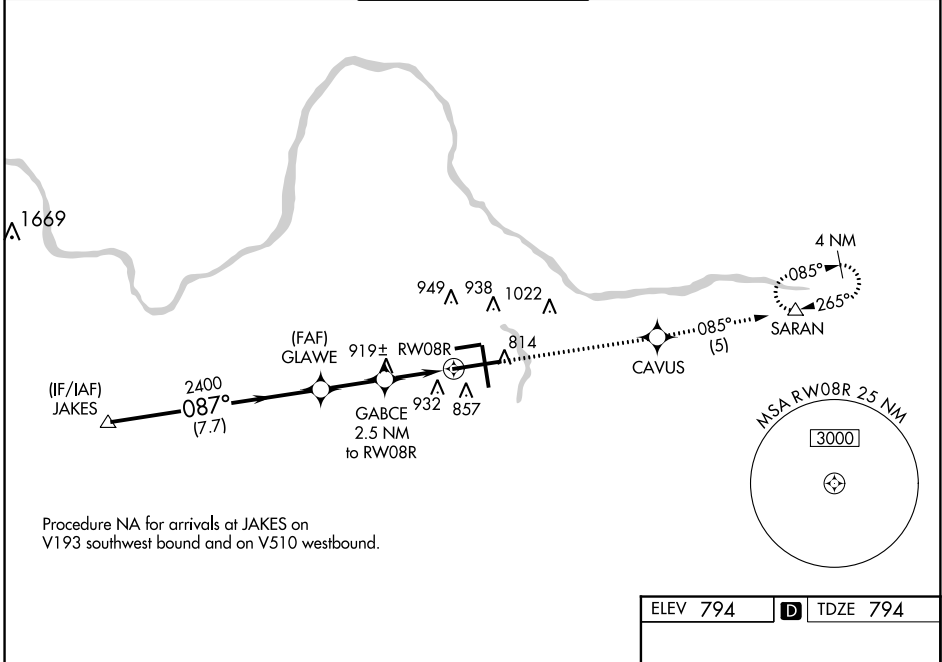
GERALD R FORD INTL (G.R.)

**ASR** For uncompensated Baro-VNAV systems, LNAV/VNAV NA below -16°C (4°F) or above 47°C (116°F). DME/DME RNP-0.3 NA. For inop ALS, increase LNAV Cat D visibility to RVR 6000.

**MALSR**

**MISSED APPROACH:**  
Climb to 2700 direct CAVUS and on track 085° to SARAN and hold.

ATIS <b>118.725</b>	GRAND RAPIDS APP CON ★ <b>128.4 257.6</b>	GRAND RAPIDS TOWER ★ <b>135.65 (CTAF) 339.8</b>	GND CON <b>121.8</b>	CLNC DEL <b>119.3</b>	UNICOM <b>122.95</b>
------------------------	--	--	-------------------------	--------------------------	-------------------------

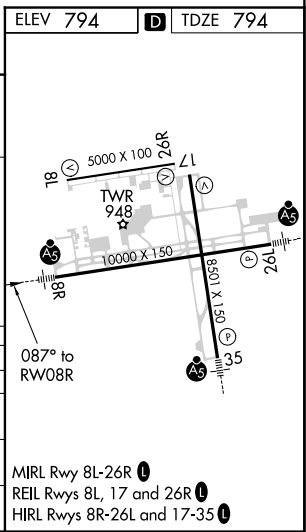


Procedure NA for arrivals at JAKES on V193 southwest bound and on V510 westbound.

EC-1, 14 SEP 2017 to 12 OCT 2017

EC-1, 14 SEP 2017 to 12 OCT 2017

	JAKES	GLAWE	GABCE 2.5 NM to RW08R	RW08R	CAVUS	SARAN
	2700	2400	*1640		2700	tr 085°
	GP 3.00° TCH 51		*1.1 NM to RW08R			
	7.7 NM	2.3 NM	1.4 NM	1.1 NM		
CATEGORY	A	B	C	D		
LPV DA		994/24	200 (200-½)			
LNAV/VNAV DA		1297/50	503 (600-1)			
LNAV MDA	1180/24	386 (400-½)	1180/35 386 (400-¾)	1180/50 386 (400-1)		
<b>C</b> CIRCLING	1260-1	466 (500-1)	1340-1½ 546 (600-1½)	1360-2 566 (600-2)		



MIRL Rwy 8L-26R **1**  
REIL Rws 8L, 17 and 26R **1**  
HIRL Rws 8R-26L and 17-35 **1**