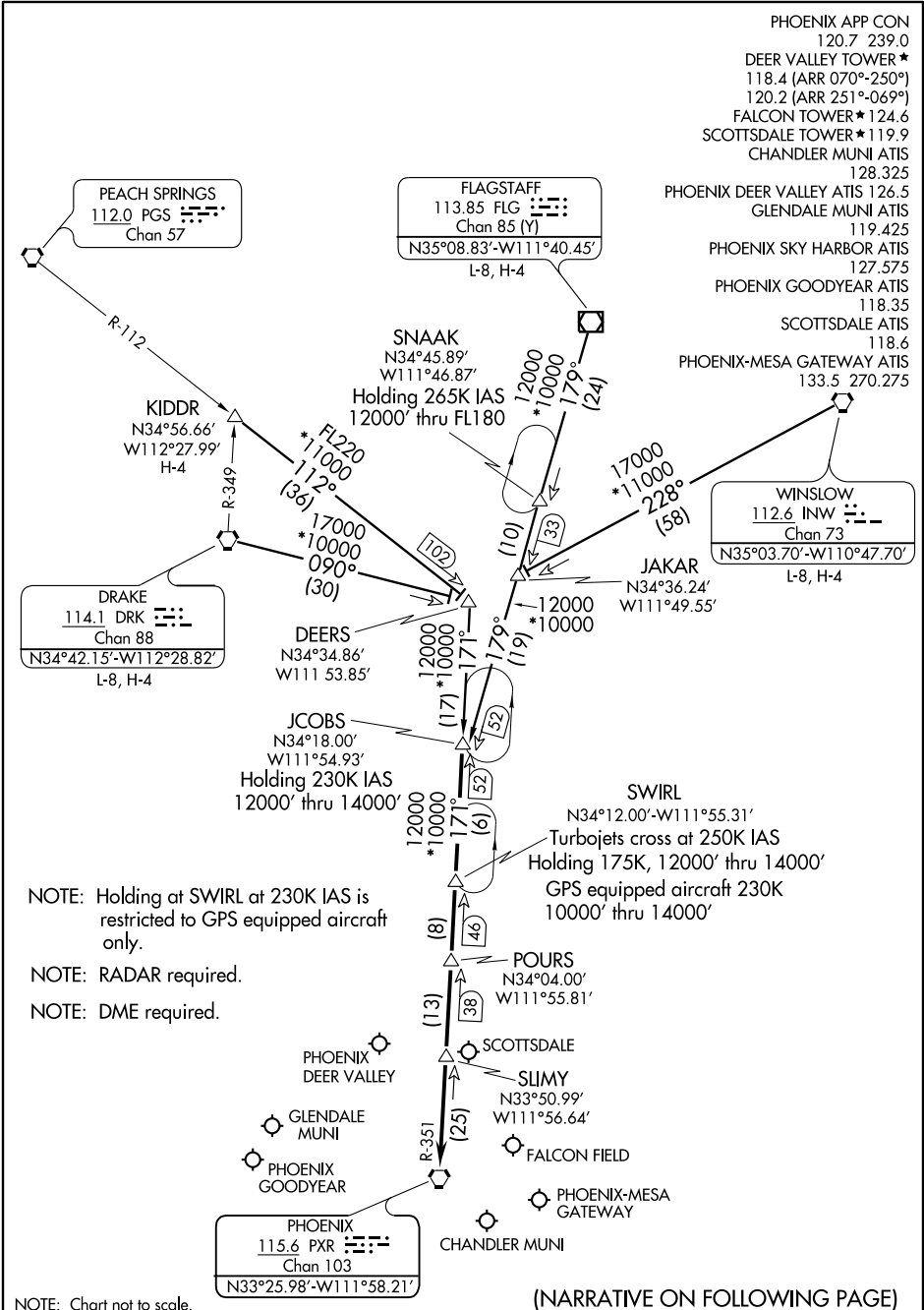


JCOBS TWO ARRIVAL

SCOTTSDALE, ARIZONA

SW-4, 31 MAY 2012 to 28 JUN 2012

SW-4, 31 MAY 2012 to 28 JUN 2012



NOTE: Holding at SWIRL at 230K IAS is restricted to GPS equipped aircraft only.

NOTE: RADAR required.

NOTE: DME required.

(NARRATIVE ON FOLLOWING PAGE)

JCOBS TWO ARRIVAL

SCOTTSDALE, ARIZONA

JCOBS TWO ARRIVAL

SCOTTSDALE, ARIZONA

ARRIVAL ROUTE DESCRIPTION

DRAKE TRANSITION (DRK.JCOBS2): From over DRK VORTAC via DRK R-090 to DEERS INT, then via PXR R-351 to JCOBS INT. Thence....

FLAGSTAFF TRANSITION (FLG.JCOBS2): From over FLG VOR/DME via FLG R-179 to JCOBS INT. Thence....

KIDDR TRANSITION (KIDDR.JCOBS2): From over KIDDR INT via PGS R-112 to DEERS INT then via PXR R-351 to JCOBS INT. Thence....

WINSLOW TRANSITION (INW.JCOBS2): From over INW VORTAC via INW R-228 to JAKAR INT, then via FLG R-179 to JCOBS INT. Thence....

... From over JCOBS INT via PXR R-351 to SWIRL DME, then via PXR R-351 to SLIMY DME, then direct PXR VORTAC. After POURS, expect radar vectors to final approach course.

LOST COMMUNICATIONS: From DRK VORTAC via DRK R-090 to intercept PXR R-351 at DEERS INT direct PXR VORTAC. From FLG VORTAC, proceed direct to JCOBS INT then direct PXR VORTAC. From KIDDR INT to DEERS INT via PGS R-112 to intercept PXR R-351 to PXR VORTAC. From INW VORTAC to JAKAR INT via INW R-228 to intercept FLG R-179 to JCOBS INT to intercept PXR R-351 to PXR VORTAC.

SW-4, 31 MAY 2012 to 28 JUN 2012

SW-4, 31 MAY 2012 to 28 JUN 2012