

WAAS CH <b>90306</b> <b>W01A</b>	APP CRS <b>014°</b>	Rwy Idg <b>6449</b> TDZE <b>1049</b> Apt Elev <b>1071</b>
--	------------------------	---

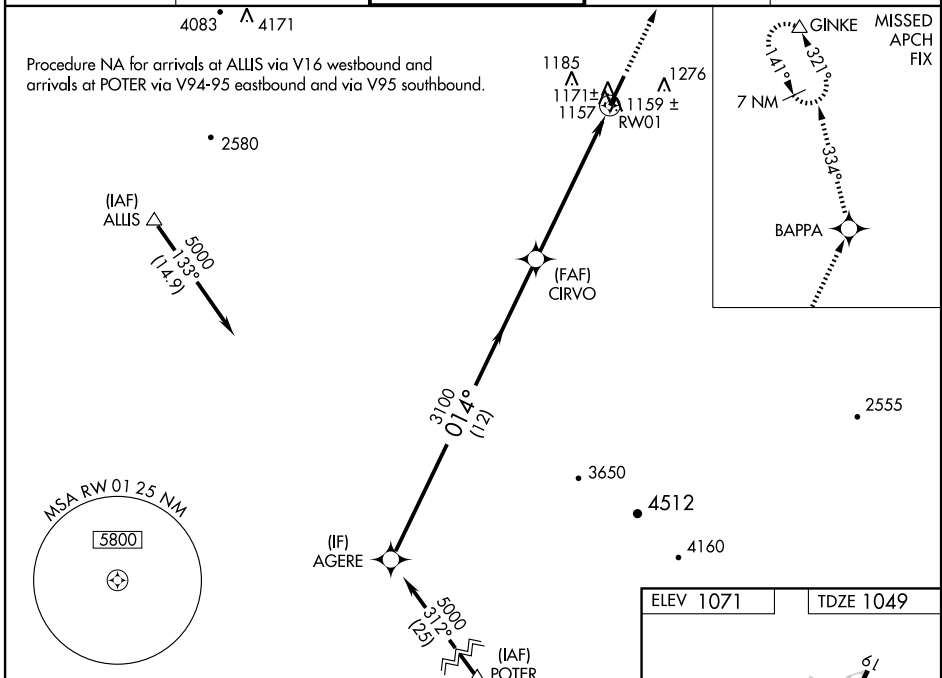
# RNAV (GPS) RWY 1

GLENDALE MUNI (GEU)

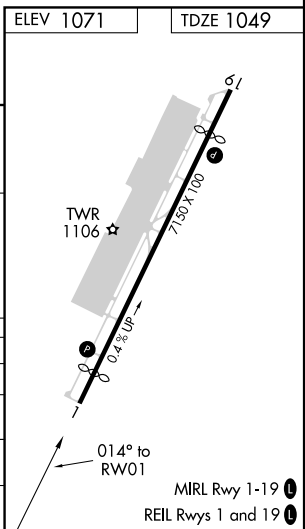
**⚠** Circling not authorized west of Rwy 1-19. DME/DME RNP-0.3 NA. Baro-VNAV NA when using Phoenix Sky Harbor Intl altimeter setting. For uncompensated Baro-VNAV systems, LNAV/VNAV NA below -17°C (2°F) or above 47°C (117°F). When local altimeter setting not received, use Phoenix Sky Harbor Intl altimeter setting and increase all DA/MDAs 60 feet, and increase LNAV/VNAV all Cats visibility ¼ mile and LNAV Cat C and D and Circling Cat C visibility ¼ mile.

**MISSED APPROACH:** Climb to 10000 direct BAPPA and via 334° track to GINKE and hold, continue climb-in-hold to 10000.

ATIS <b>119.425</b>	LUKE APP CON ★ <b>118.15 363.125</b>	GLENDALE TOWER ★ <b>121.0 (CTAF)</b>	GND CON <b>118.0</b>	UNICOM <b>122.95</b>
------------------------	---	---	-------------------------	-------------------------



AGERE	Procedure Turn NA			10000	BAPPA	334° tr	GINKE
5000	CIRVO						
GS 3.00° TCH 40	3100				RWY 01		
	12 NM			6.2 NM			
CATEGORY	A	B	C	D			
LPV DA	1378-1¼			329 (400-1¼)			
LNAV/VNAV DA	1457-1½			408 (400-1½)			
LNAV MDA	1440-1			391 (400-1)		1440-1¼	
						391 (400-1¼)	
CIRCLING	1460-1	1660-1	1660-1½	1660-2			
	389 (400-1)	589 (600-1)	589 (600-1½)	589 (600-2)			



SW-4, 31 MAY 2012 to 28 JUN 2012

SW-4, 31 MAY 2012 to 28 JUN 2012