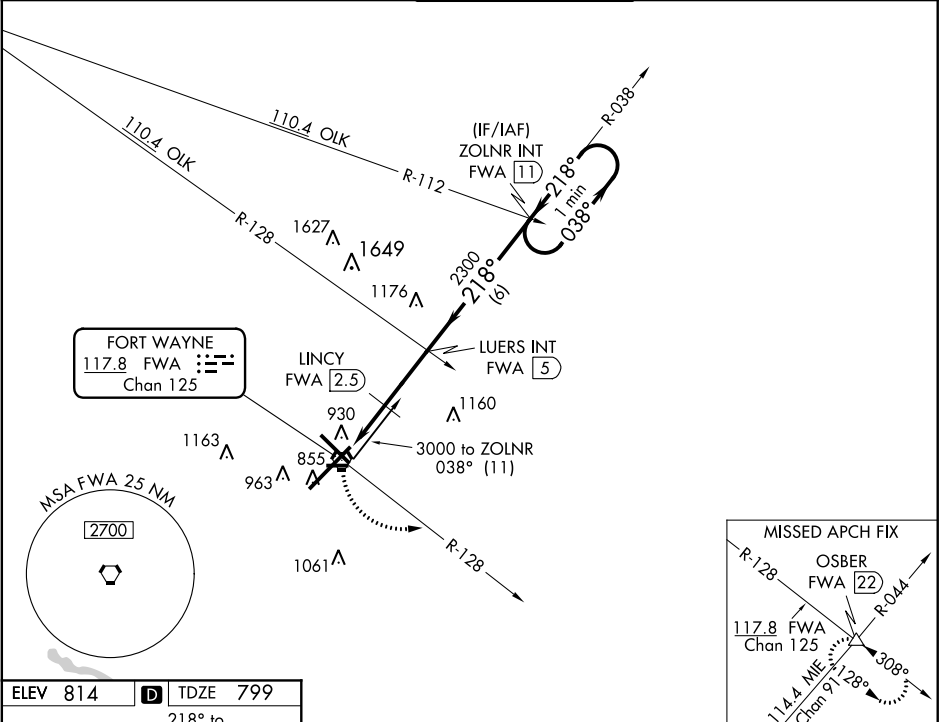


VORTAC FWA <b>117.8</b> Chan 125	APP CRS <b>218°</b>	Rwy Idg TDZE Apt Elev	<b>11981</b> <b>799</b> <b>814</b>
--	------------------------	-----------------------------	--

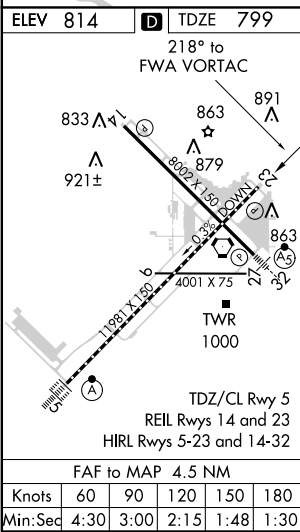
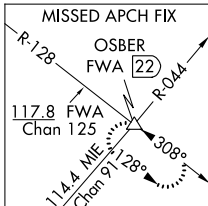
# VOR or TACAN RWY 23

FORT WAYNE INTL (FWA)

ASR		MISSED APPROACH: Climbing left turn to 3000 via FWA VORTAC R-128 to OSBER INT/FWA 22 DME and hold.		
ATIS <b>121.25 349.0</b>	FORT WAYNE APP CON <b>127.2 284.6</b>	FORT WAYNE TOWER <b>119.1 272.725</b>	GND CON <b>121.9 348.6</b>	CLNC DEL <b>124.75</b>



FORT WAYNE  
117.8 FWA  
Chan 125



	3000	OSBER	LUERS INT FWA (5)	ZOLNR INT FWA (11)	One Minute Holding Pattern
	FWA R-128	△	LINCY FWA (2.5)		038° → 3000
		FWA (1.8)			← 218°
		FWA (0.5)			
		3.05°			VGSI and descent angles not coincident (VGSI angle 3.00/TCH 76).
		TCH 55			
	1.3	0.7 NM	2.5	6 NM	
CATEGORY	A	B	C	D	E
S-23	1500/50	701 (700-1)	1500-2 701 (700-2)	1500-2¼ 701 (700-2¼)	1500-2½ 701 (700-2½)
CIRCLING	1500-1	686 (700-1)	1500-2 686 (700-2)	1500-2¼ 686 (700-2¼)	1500-2½ 706 (800-2½)
LINCY FIX MINIMUMS					
S-23	1300/50	501 (500-1)	1300-1½	501 (500-1½)	1300-1¾ 501 (500-1¾)
CIRCLING	1320-1	506 (600-1)	1320-1½	566 (600-2)	1520-2½ 706 (800-2½)

EC-2, 08 JAN 2015 to 05 FEB 2015

EC-2, 08 JAN 2015 to 05 FEB 2015