

WAAS CH <b>57915</b> <b>W02B</b>	APP CRS <b>017°</b>	Rwy ldg <b>11050</b> TDZE <b>439</b> Apt Elev <b>439</b>
--	------------------------	--

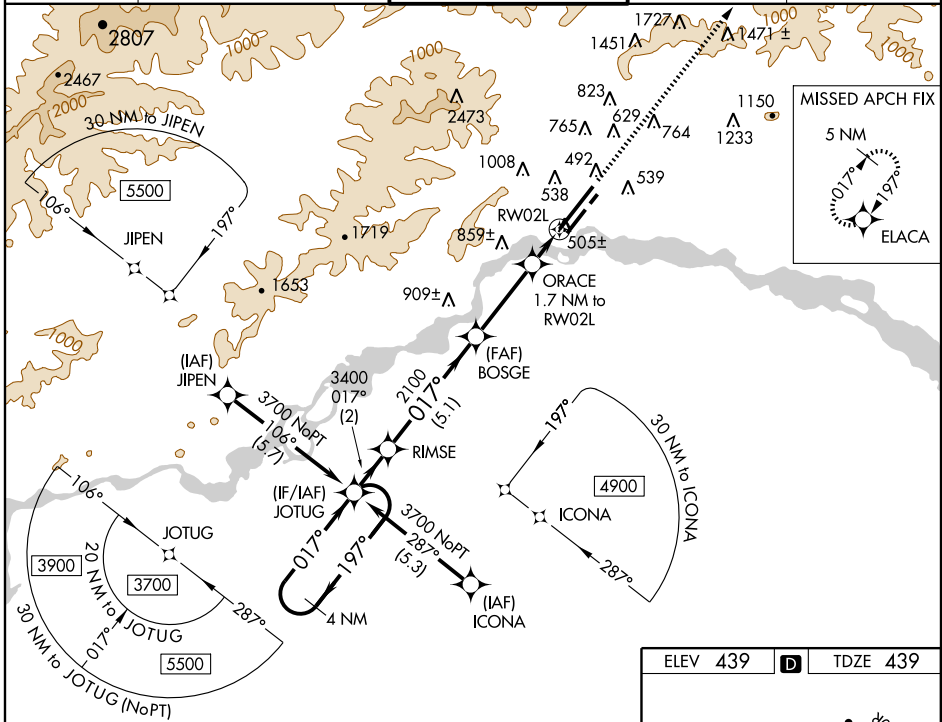
# RNAV (GPS) RWY 2L

FAIRBANKS INTL (FAI) (PAFA)

⚠ For inoperative ALSF, increase LNAV Cat D visibility to RVR 6000. Circling NA west of Rwy 2L-20R. For uncompensated Baro-VNAV systems, LNAV/VNAV NA below -25°C (-13°F) or above 48°C (118°F). DME/DME RNP-0.3 NA.

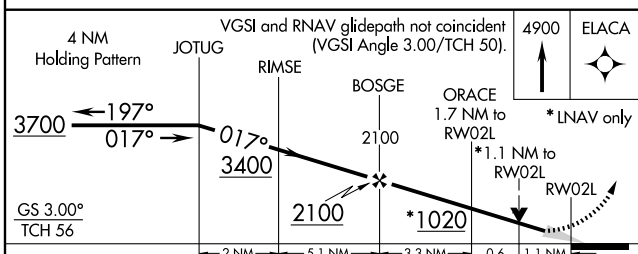
ALSF-2 MISSED APPROACH: Climb to 4900 direct ELACA and hold, continue climb-in hold to 4900.

ATIS <b>124.4</b>	FAIRBANKS APP CON <b>125.35 363.2</b>	FAIRBANKS TOWER <b>118.3 257.8</b>	GND CON <b>121.9</b>	CLNC DEL <b>127.6</b>
----------------------	--	---------------------------------------	-------------------------	--------------------------



AK, 31 MAY 2012 to 26 JUL 2012

AK, 31 MAY 2012 to 26 JUL 2012



ELEV 439	<b>D</b>	TDZE 439
----------	----------	----------

CAUTION: Seaplane landing area.

REL Rwy 20L  
TDZ/CL Rwy 2L  
MIRL Rwy 2R-20L  
HIRL Rwy 2L-20R

CATEGORY	A	B	C	D
LPV DA	639/24		200 (200-1/2)	
LNAV/ VNAV	1019-1 1/2		580 (600-1 1/2)	
LNAV MDA	820/24		381 (400-1/2)	
CIRCLING	840-1	900-1	900-1 1/2	1000-2
	401 (500-1)	461 (500-1)	461 (500-1 1/2)	561 (600-2)