

LOC I-FAI 110.3	APP CRS 197°	Rwy Idg 11050 TDZE 439 Apt Elev 439
---------------------------	------------------------	--

ILS or LOC RWY 20R

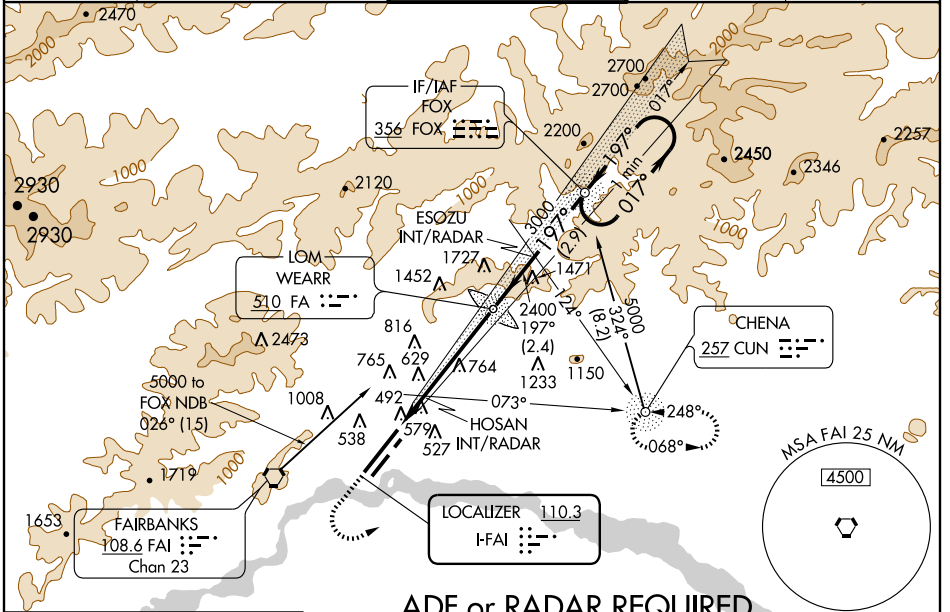
FAIRBANKS INTL (FAI) (PAFA)

For inoperative MALSR, increase S-ILS 20R Cat E visibility to RVR 4000, S-LOC 20R Cat E visibility to 2 miles. HOSAN fix minimums: Increase S-LOC 20R Cat D visibility to RVR 5000, and Cat E to RVR 6000. Circling NA west of Rwy 2L-20R. ADF Required.
 ** RVR 1800 authorized with use of FD or AP or HUD to DA.



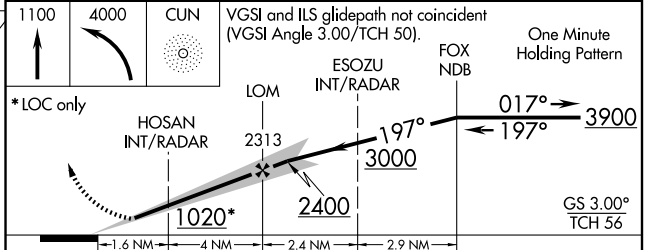
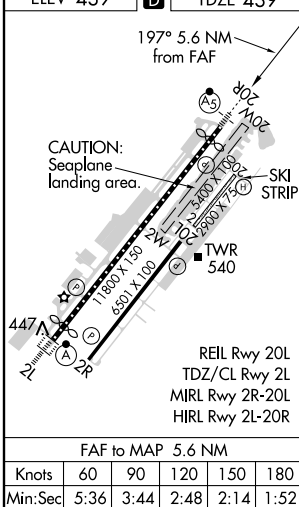
MISSED APPROACH: Climb to 1100 then climbing left turn to 4000 direct CUN NDB and hold.

ATIS 124.4	FAIRBANKS APP CON 125.35 363.2	FAIRBANKS TOWER 118.3 257.8	GND CON 121.9	CLNC DEL 127.6
----------------------	--	---------------------------------------	-------------------------	--------------------------



ADF or RADAR REQUIRED

ELEV 439	D	TDZE 439
----------	----------	----------



CATEGORY	A	B	C	D	E
S-ILS 20R**	639/24 200 (200-½)				
S-LOC 20R	1020/24	581 (600-½)	1020/50 581 (600-1)	1020/60 581 (600-1¼)	1020-1½ 581 (600-1½)
CIRCLING	1020-1	581 (600-1)	1020-1½ 581 (600-½)	1020-2 581 (600-2)	1080-2¼ 641 (700-2¼)
HOSAN FIX MINIMUMS					
S-LOC 20R	760/24 321 (400-½)		760/40 321 (400-¾)		
CIRCLING	840-1 401 (500-1)	900-1 461 (500-1)	900-1½ 461 (500-½)	1000-2 561 (600-2)	1080-2¼ 641 (700-2¼)

AK, 31 MAY 2012 to 26 JUL 2012

AK, 31 MAY 2012 to 26 JUL 2012