

# RNAV (GPS) RWY 18

MURRIETA/TEMECULA/FRENCH VALLEY (F70)

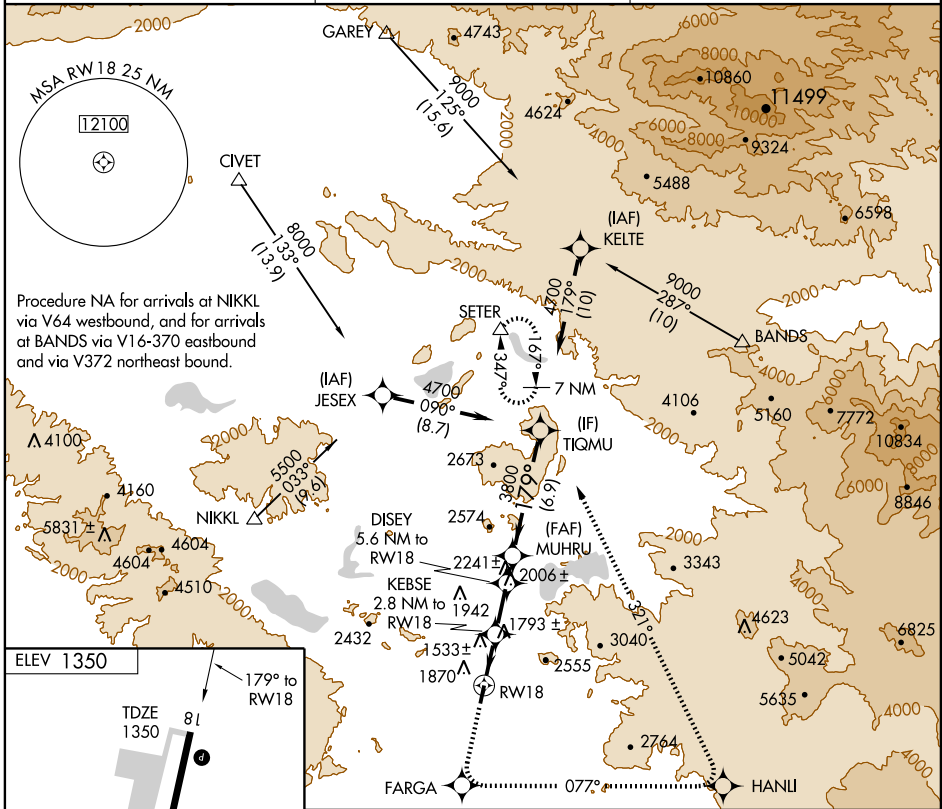
APP CRS	Rwy Idg	<b>6000</b>
<b>179°</b>	TDZE	<b>1350</b>
	Apt Elev	<b>1350</b>

**▼** DME/DME RNP-0.3 NA. Visibility reduction by helicopters NA. Circling not authorized west of Rwy 18-36.

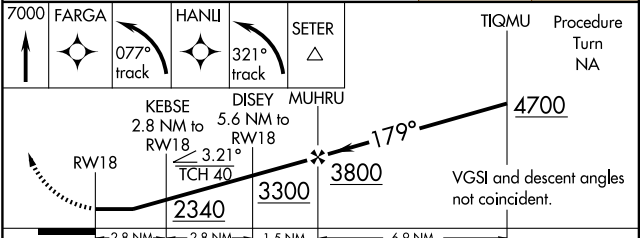
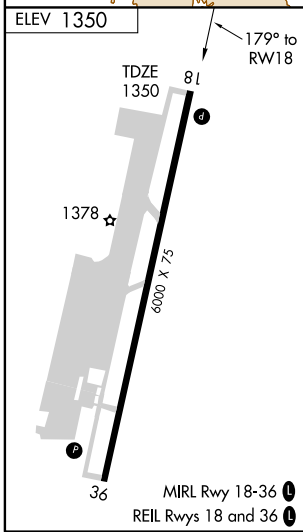
**▲ NA** When local altimeter setting not received, use Ramona altimeter setting and increase all MDAs 100 feet and all visibilities ¼ mile.

**MISSED APPROACH:** Climb to 7000 direct FARGA and left turn via 077° track to HANLI and left turn via 321° track to SETER and hold.

AWOS-3 <b>119.025</b>	MARCH APP CON * <b>133.5 324.1</b>	UNICOM <b>122.8 (CTAF) 0</b>
--------------------------	---------------------------------------	---------------------------------



Procedure NA for arrivals at NIKKL via V64 westbound, and for arrivals at BANDS via V16-370 eastbound and via V372 northeast bound.



CATEGORY	A	B	C	D
LNNAV MDA	1880-1	530 (600-1)	1880-1½ 530 (600-1½)	NA
CIRCLING	2040-1	690 (700-1)	2040-2 690 (700-2)	NA

# RNAV (GPS) RWY 18

SW-3, 31 MAY 2012 to 28 JUN 2012

SW-3, 31 MAY 2012 to 28 JUN 2012