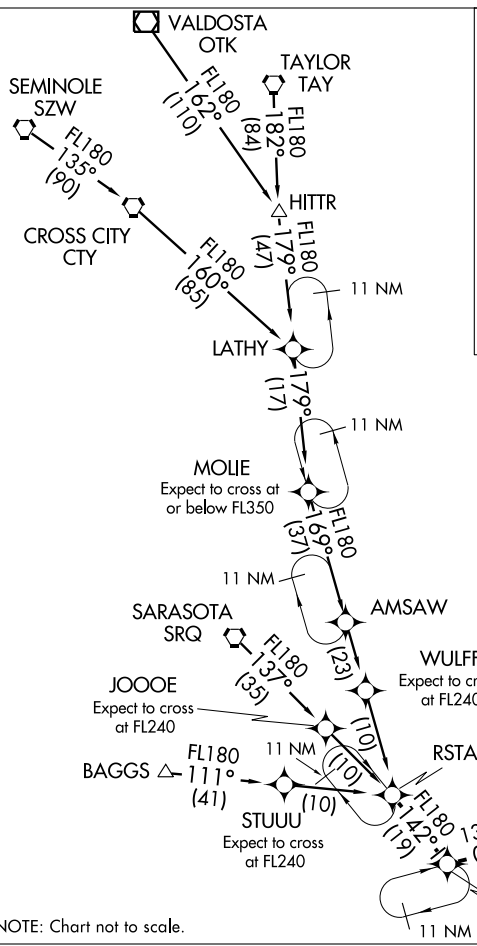


WLACE TWO ARRIVAL (RNAV)
(WLACE:WLACE2) 1:0098



BAGGS TRANSITION (BAGGS.WLACE2)
SARASOTA TRANSITION (SRQ.WLACE2)
SEMINOLE TRANSITION (SZW.WLACE2)
TAYLOR TRANSITION (TAY.WLACE2)
VALDOSTA TRANSITION (OTK.WLACE2)

... From over RSTAA via 142° track to WLACE, thence as depicted to BEKAH, then via 096° heading. Expect radar vectors.

LOST COMMUNICATION: Continue track to BEKAH then turn left direct PBI VORTAC then direct CUPED and hold.

PALM BEACH APP CON 125.2 343.6
 PALM BEACH INTL ATIS 123.75



- NOTE: DME/DME/IRU or GPS Required.
- NOTE: Radar required.
- NOTE: RNAV 1.
- NOTE: Turbojet/Turboprop Aircraft Only.
- NOTE: For Non-GPS equipped aircraft, DHP must be operational.

NOTE: Chart not to scale.

WEST PALM BEACH, FLORIDA

(WLACE:WLACE2) 1:0098
 WLACE TWO ARRIVAL (RNAV)

ST-449 (FAA)

WEST PALM BEACH, FLORIDA