

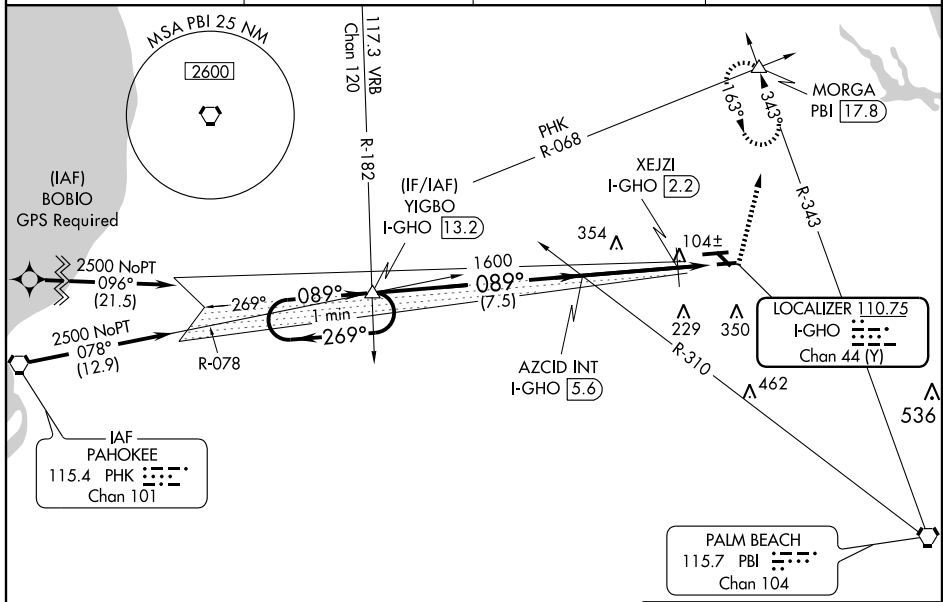
LOC/DME I-GHO <b>110.75</b> Chan <b>44</b> (Y)	APP CRS <b>089°</b>	Rwy Idg <b>THRE 21</b> Apt Elev <b>22</b>	<b>4300</b>
--	------------------------	--	-------------

WEST PALM BEACH/  
NORTH PALM BEACH COUNTY GENERAL AVIATION (F45) **ILS or LOC RWY 8R**

When VGSI inoperative, Circling Rwy 13 and Rwy 31 NA at night. Visibility reduction by helicopters NA. When local altimeter setting not received, use Palm Beach Intl altimeter setting: increase S-ILS 8R DA to 299 and S-ILS 8R all Cats visibility 1/8 mile; increase all MDA 40 feet and Circling Cat D visibility 1/4 mile; increase XEJZI fix minimums S-LOC 8R Cats C/D visibility 1/8 mile and Circling Cat D visibility 1/4 mile.

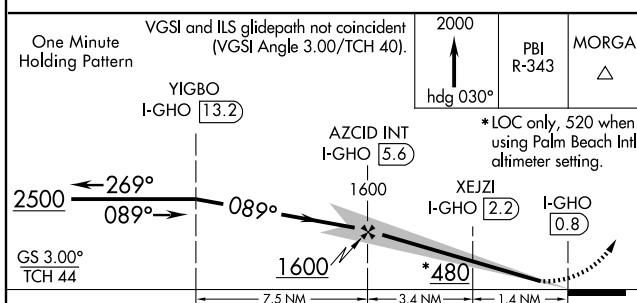
MISSED APPROACH: Climb to 2000 on heading 030° and PBI VORTAC R-343 to MORGA INT/PBI 17.8 DME and hold.

AWOS-3 <b>119.975</b>	PALM BEACH APP CON <b>124.6 317.4</b>	CLNC DEL <b>120.825</b>	UNICOM <b>123.075</b> (CTAF) <b>0</b>
--------------------------	--	----------------------------	--

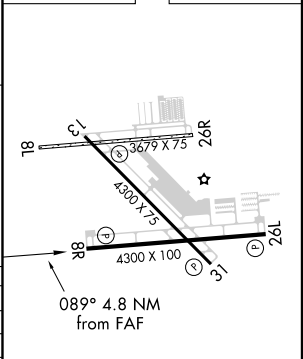


SE-3, 31 MAY 2012 to 28 JUN 2012

SE-3, 31 MAY 2012 to 28 JUN 2012



ELEV 22	THRE 21
---------	---------



CATEGORY	A	B	C	D
S-ILS 8R		271-3/4	250 (300-3/4)	
S-LOC 8R	480-1	459 (500-1)	480-1 3/8	459 (500-1 3/8)
CIRCLING	480-1	458 (500-1)	480-1 1/2 458 (500-1 1/2)	680-2 658 (700-2)
XEJZI FIX MINIMUMS				
S-LOC 8R	420-1	399 (400-1)	420-1 1/8	399 (400-1 1/8)
CIRCLING	460-1 438 (500-1)	480-1 458 (500-1)	480-1 1/2 458 (500-1 1/2)	680-2 658 (700-2)

HIRL Rwy 8R-26L **0**  
MIRL Rwy 13-31 **0**  
REIL Rwy 8R, 13, 26L and 31 **0**

FAF to MAP 4.8 NM

Knots	60	90	120	150	180
Min:Sec	4:48	3:12	2:24	1:55	1:36

WEST PALM BEACH, FLORIDA

AL-9151 (FAA)

WASS CH <b>40310</b> <b>W13A</b>	APP CRS <b>139°</b>	Rwy Idg <b>4300</b> TDZE <b>22</b> Apt Elev <b>22</b>
--	------------------------	---

WEST PALM BEACH/  
NORTH PALM BEACH COUNTY GENERAL AVIATION (F45)

# RNAV (GPS) RWY 13

**⚠** Baro-VNAV NA when using Palm Beach Intl altimeter setting. For uncompensated Baro-VNAV systems, LNAV/VNAV NA below -15°C (5°F) or above 48°C (118°F).  
**⚠** DME/DME RNP-0.3 NA. Visibility reduction by helicopters NA. When local altimeter settings not received, use Palm Beach Intl altimeter setting and increase all DA 28 feet and all MDA 40 feet and increase LPV all Cats visibility and Circling Cat D visibility ¼ mile.

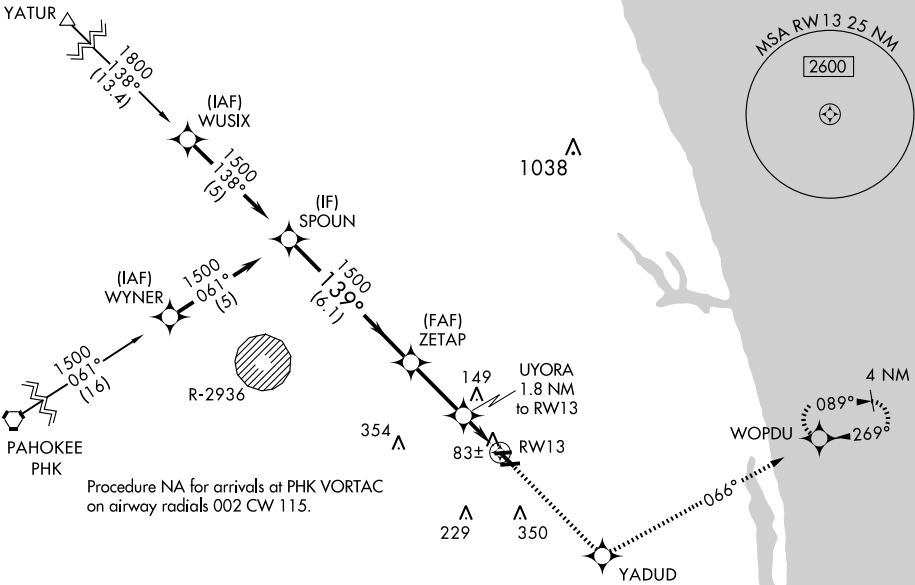
**MISSED APPROACH:**  
Climb to 2300 direct YADUD and via 066° track to WOPDU and hold.

AWOS-3  
**119.975**

PALM BEACH APP CON  
**124.6 317.4**

CLNC DEL  
**120.825**

UNICOM  
**123.075 (CTAF)**

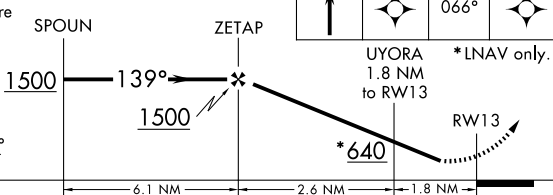


SE-3, 31 MAY 2012 to 28 JUN 2012

SE-3, 31 MAY 2012 to 28 JUN 2012

VGSI and descent angles not coincident (VGSI Angle 3.00/TCH 40).

Procedure Turn NA



ELEV 22	TDZE 22
---------	---------

CATEGORY	A	B	C	D
LPV DA	324-1 302 (400-1)			
LNAV/VNAV DA	384-1¼ 362 (400-1¼)			
LNAV MDA	380-1 358 (400-1)		380-1¼ 358 (400-1¼)	
CIRCLING	460-1 438 (500-1)	480-1 458 (500-1)	480-1½ 458 (500-1½)	680-2 658 (700-2)

HIRL Rwy 8R-26L  
MIRL Rwy 13-31  
REIL Rwy 8R, 13, 26L and 31

WEST PALM BEACH, FLORIDA  
Orig-A 11265

WEST PALM BEACH/ NORTH PALM BEACH COUNTY GENERAL AVIATION (F45)

26°51'N-80°13'W

# RNAV (GPS) RWY 13

WEST PALM BEACH, FLORIDA

AL-9151 (FAA)

WASS CH <b>93910</b> <b>W26A</b>	APP CRS <b>269°</b>	Rwy Idg <b>4300</b> TDZE <b>22</b> Apt Elev <b>22</b>
--	------------------------	---

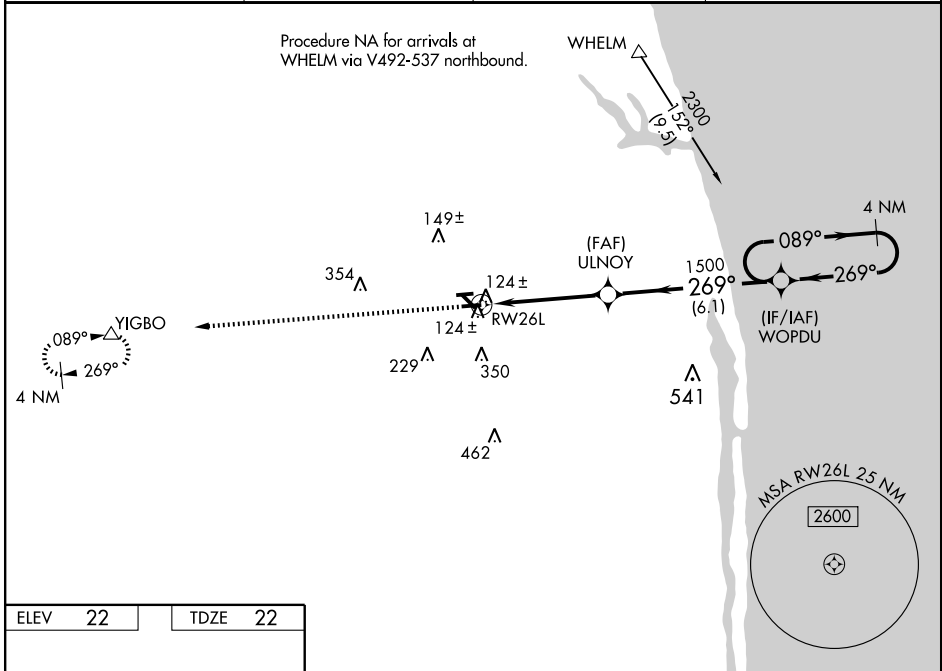
WEST PALM BEACH/  
NORTH PALM BEACH COUNTY GENERAL AVIATION (F45)

# RNAV (GPS) RWY 26L

**⚠** NA For uncompensated Baro-VNAV systems, LNAV/VNAV NA below -15°C (5°F) or above 48°C (118°F). DME/DME RNP-0.3 NA. Visibility reduction by helicopters NA. When local altimeter setting not received, use Palm Beach Intl altimeter setting and increase all DA 28 feet and MDA 40 feet and increase LNAV/VNAV all Cats visibility and Circling Cat D visibility ¼ mile. Baro-VNAV and VDP NA when using Palm Beach Intl altimeter setting.

**⚠** MISSED APPROACH: Climb to 2500 direct YIGBO and hold.

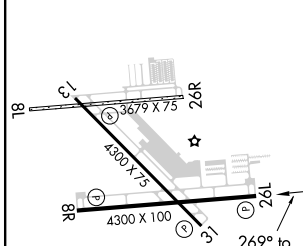
AWOS-3 <b>119.975</b>	PALM BEACH APP CON <b>124.6 317.4</b>	CLNC DEL <b>120.825</b>	UNICOM <b>123.075</b> (CTAF) <b>📻</b>
--------------------------	--	----------------------------	--



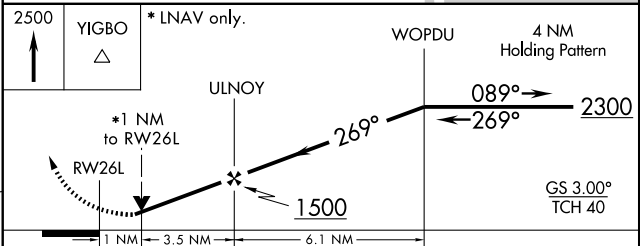
SE-3, 31 MAY 2012 to 28 JUN 2012

SE-3, 31 MAY 2012 to 28 JUN 2012

ELEV <b>22</b>	TDZE <b>22</b>
----------------	----------------



HIRL Rwy 8R-26L <b>📻</b>
MIRL Rwy 13-31 <b>📻</b>
REIL Rwy 8R, 13, 26L and 31 <b>📻</b>



CATEGORY	A	B	C	D
LPV DA	340-1¼		318 (400-1¼)	
LNAV/VNAV DA	394-1¼		372 (400-1¼)	
LNAV MDA	380-1		358 (400-1)	
CIRCLING	460-1	480-1	480-1½	380-1¼
	438 (500-1)	458 (500-1)	458 (500-1½)	358 (400-1¼)
				680-2
				658 (700-2)

WEST PALM BEACH, FLORIDA  
Orig 11265

WEST PALM BEACH/NORTH PALM BEACH COUNTY GENERAL AVIATION (F45)  
26°51'N-80°13'W

# RNAV (GPS) RWY 26L

WAAS CH <b>78024</b> <b>W08A</b>	APP CRS <b>089°</b>	Rwy Idg THRE <b>21</b> Apt Elev <b>22</b>	<b>4300</b>
--	------------------------	--	-------------

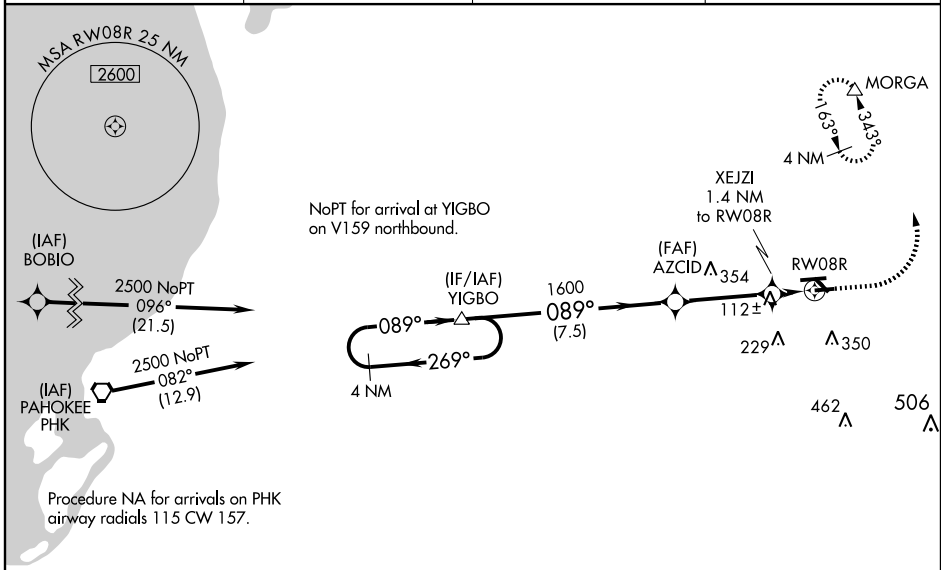
WEST PALM BEACH/  
NORTH PALM BEACH COUNTY GENERAL AVIATION (F45)

# RNAV (GPS) RWY 8R

**⚠** When VGSI inoperative, Circling Rwy 13 and Rwy 31 NA at night. Baro-VNAV NA when using Palm Beach Intl altimeter setting. For uncompensated Baro-VNAV systems, LNAV/VNAV NA below -15°C (5°F) or above 43°C (109°F). DME/DME RNP-0.3 NA. Visibility reduction by helicopters NA. When local altimeter setting not received, use Palm Beach Intl altimeter setting: increase LPV DA to 299 and LPV all Cats visibility 1/8 mile; increase LNAV/VNAV DA to 299 and LNAV/VNAV all Cats visibility 1/8 mile; increase all MDA 40 feet and LNAV Cats C/D visibility 1/8 mile and Circling Cat D visibility 1/4 mile.

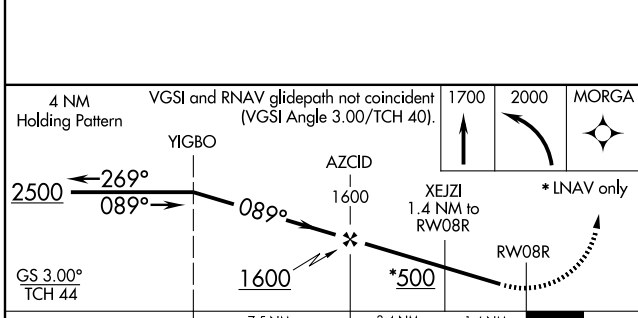
**MISSED APPROACH:**  
Climb to 1700 then climbing left turn to 2000 direct MORG A and hold.

AWOS-3 <b>119.975</b>	PALM BEACH APP CON <b>124.6 317.4</b>	CLNC DEL <b>120.825</b>	UNICOM <b>123.075 (CTAF) 0</b>
--------------------------	--	----------------------------	-----------------------------------



SE-3, 31 MAY 2012 to 28 JUN 2012

SE-3, 31 MAY 2012 to 28 JUN 2012



ELEV 22	THRE 21
---------	---------

HIRL Rwy 8R-26L 0  
MIRL Rwy 13-31 0  
REIL Rwy 8R, 13, 26L and 31 0

CATEGORY	A	B	C	D
LPV DA		271-3/4	250 (300-3/4)	
LNAV/VNAV DA		271-3/4	250 (300-3/4)	
LNAV MDA	420-1	399 (400-1)	420-1 1/8	399 (400-1 1/8)
CIRCLING	460-1 438 (500-1)	480-1 458 (500-1)	480-1 1/2 458 (500-1 1/2)	680-2 658 (700-2)

WEST PALM BEACH, FLORIDA

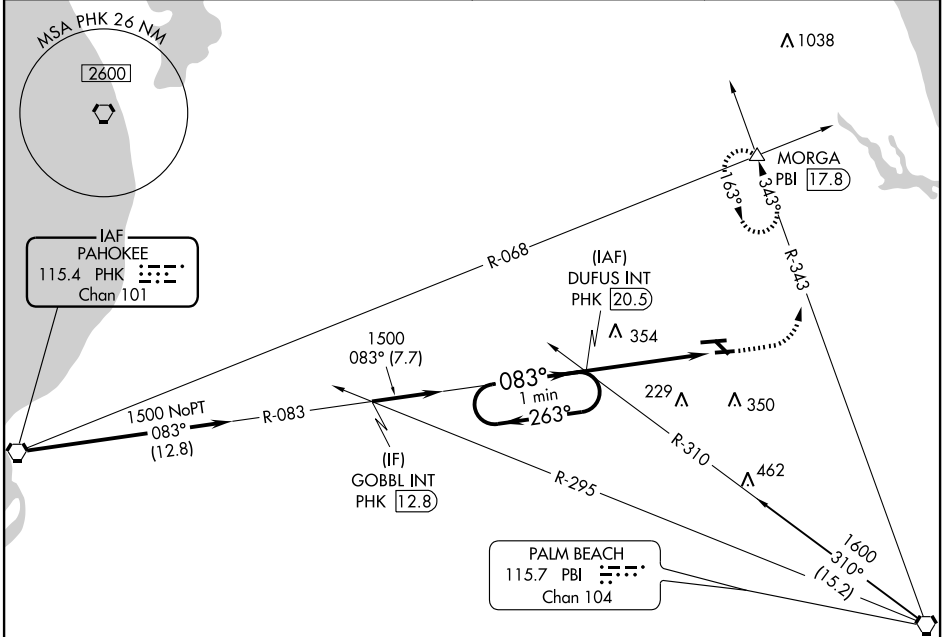
AL-9151 (FAA)

11265

VORTAC PHK <b>115.4</b> Chan <b>101</b>	APP CRS <b>083°</b>	Rwy Idg TDZE <b>23</b> Apt Elev <b>23</b>	<b>4300</b>
---	------------------------	---	-------------

WEST PALM BEACH/  
NORTH PALM BEACH COUNTY GENERAL AVIATION (F45)  
**VOR RWY 8R**

<b>NA</b> When local altimeter setting not received, use Palm Beach altimeter setting.	MISSED APPROACH: Climb to 900 then climbing left turn to 2000 via PBI VORTAC R-343 to MORGA INT/17.8 DME and hold.		
AWOS-3 <b>119.975</b>	PALM BEACH APP CON <b>124.6 317.4</b>	CLNC DEL <b>120.825</b>	UNICOM <b>123.075 (CTAF) 0</b>



SE-3, 31 MAY 2012 to 28 JUN 2012

SE-3, 31 MAY 2012 to 28 JUN 2012

ELEV 23	TDZE 23
---------	---------

HIRL Rwy 8R-26L  
MIRL Rwy 13-31  
REIL Rwy 8R, 13, 26L and 31

FAF to MAP 4.7 NM

Knots	60	90	120	150	180
Min:Sec	4:42	3:08	2:21	1:53	1:34

CATEGORY	A	B	C	D
S-8R	700-1 677 (700-1)	700-1¼ 677 (700-1¼)	700-2 677 (700-2)	700-2¼ 677 (700-2¼)
CIRCLING	700-1 677 (700-1)	700-1¼ 677 (700-1¼)	700-2 677 (700-2)	700-2¼ 677 (700-2¼)

WEST PALM BEACH, FLORIDA  
Amdt 1B 29JUL10

WEST PALM BEACH/ NORTH PALM BEACH COUNTY GENERAL AVIATION (F45)  
26°51'N-80°13'W

**VOR RWY 8R**