

VORTAC SPS 112.7 Chan 74	APP CRS 196°	Rwy Idg TDZE Apt Elev	N/A N/A 1005
--	------------------------	-----------------------------	---

VOR-B

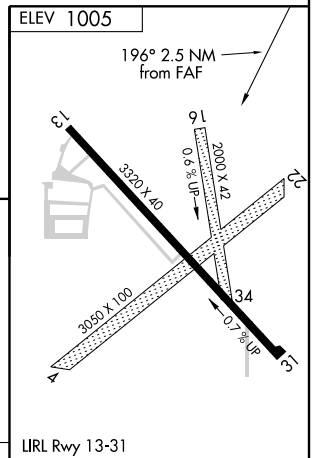
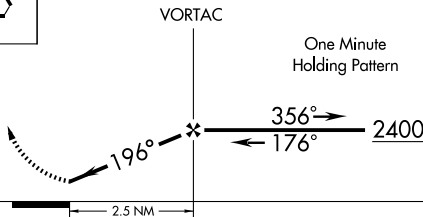
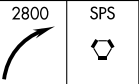
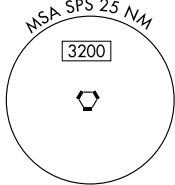
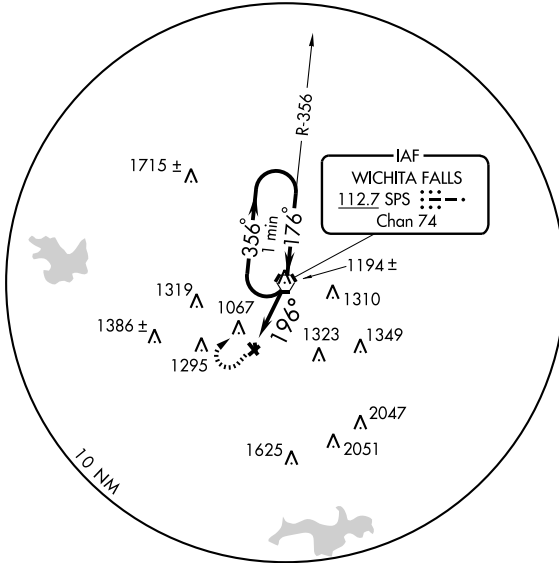
WICHITA FALLS/ WICHITA VALLEY (F14)

▼ Use Sheppard AFB/Wichita Falls Muni altimeter setting; when not received, use Frederick, OK altimeter setting and increase all MDA 100 feet. Increase Circling Cat C visibility 1/4 mile.
▲ NA MISSED APPROACH: Climbing right turn to 2800 direct SPS VORTAC and hold.

SHEPPARD APP CON *
118.2 292.3

UNICOM
122.8 (CTAF)

2198
▲



CATEGORY	A	B	C	D	FAF to MAP 2.5 NM					
CIRCLING	1520-1 515 (600-1)		1680-2 675 (700-2)	NA	Knots	60	90	120	150	180
					Min:Sec	2:30	1:40	1:15	1:00	0:50

SC-2, 31 MAY 2012 to 28 JUN 2012

SC-2, 31 MAY 2012 to 28 JUN 2012

VORTAC SPS 112.7 Chan 74	APP CRS 015°	Rwy Idg TDZE Apt Elev 1005	N/A N/A N/A
--	------------------------	--	-------------------

VOR/DME-C

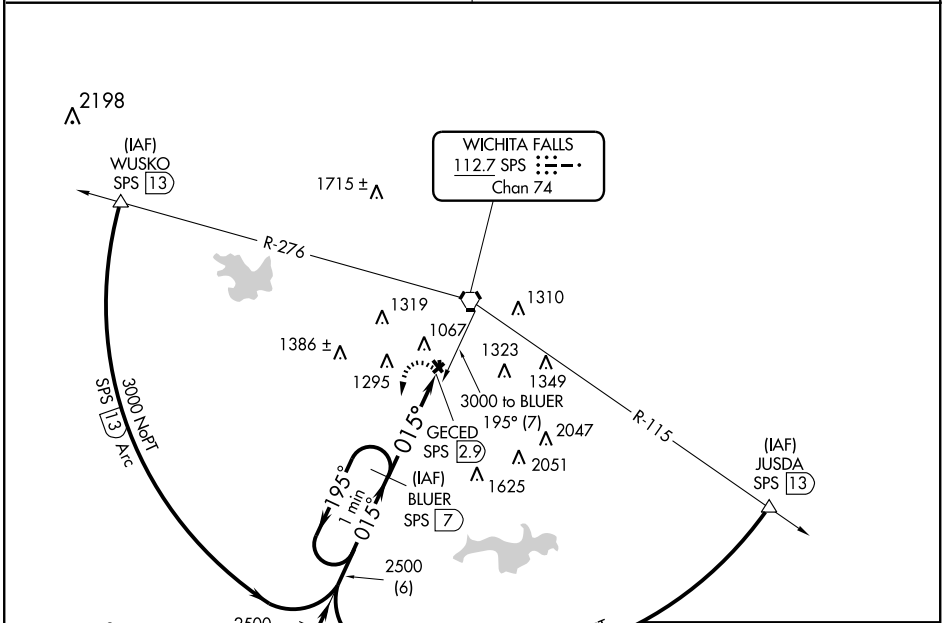
WICHITA FALLS/ WICHITA VALLEY (F14)

Visibility reduction by helicopters NA.
 Use Sheppard AFB/Wichita Falls Mun, TX altimeter setting;
 When not received, use Frederick Rgnl altimeter setting and
 increase all MDA 120 feet and Cat C visibility ¼ mile.
 Procedure NA at night.

MISSED APPROACH: Climbing left turn to 2700
 on SPS VORTAC R-195 to BLUER/SPS 7 DME
 and hold.

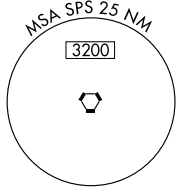
SHEPPARD APP CON *
118.2 292.3

UNICOM
122.8 (CTAF)

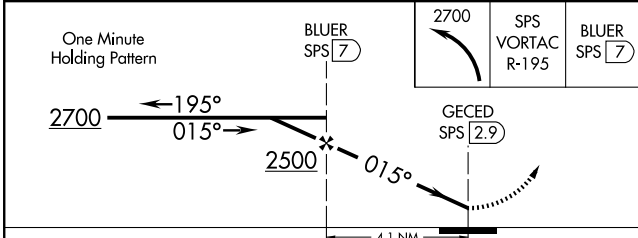
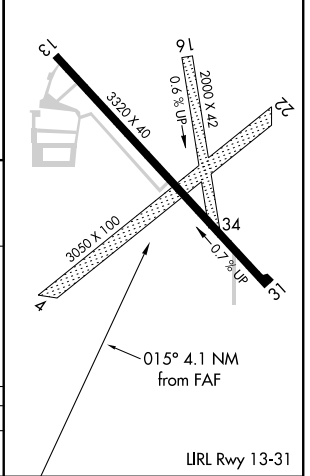


SC-2, 31 MAY 2012 to 28 JUN 2012

SC-2, 31 MAY 2012 to 28 JUN 2012



ELEV 1005



CATEGORY	A	B	C	D
CIRCLING	1520-1	515 (600-1)	1680-2 675 (700-2)	NA

URL Rwy 13-31