

VORTAC SPS 112.7 Chan 74	APP CRS 196°	Rwy Idg TDZE Apt Elev	N/A N/A 1005
---------------------------------------	------------------------	-----------------------------	---

VOR-B

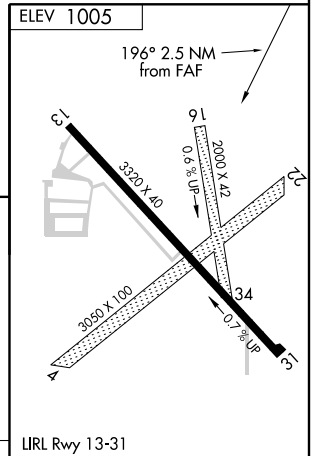
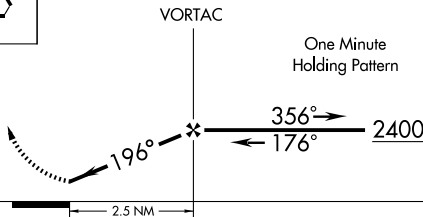
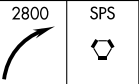
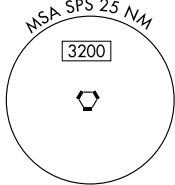
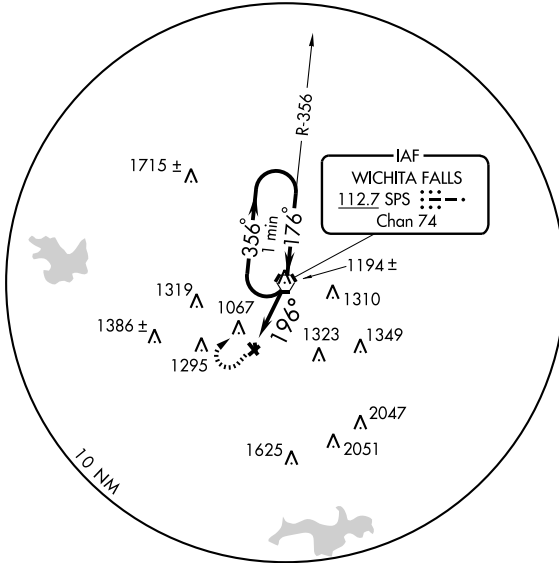
WICHITA FALLS/ WICHITA VALLEY (F14)

▼ Use Sheppard AFB/Wichita Falls Muni altimeter setting; when not received, use Frederick, OK altimeter setting and increase all MDA 100 feet. Increase Circling Cat C visibility 1/4 mile.
▲ NA MISSED APPROACH: Climbing right turn to 2800 direct SPS VORTAC and hold.

SHEPPARD APP CON *
118.2 292.3

UNICOM
122.8 (CTAF)

2198
▲



CATEGORY	A	B	C	D	FAF to MAP 2.5 NM					
CIRCLING	1520-1 515 (600-1)		1680-2 675 (700-2)	NA	Knots	60	90	120	150	180
					Min:Sec	2:30	1:40	1:15	1:00	0:50

SC-2, 31 MAY 2012 to 28 JUN 2012

SC-2, 31 MAY 2012 to 28 JUN 2012

VORTAC SPS 112.7 Chan 74	APP CRS 015°	Rwy Idg TDZE Apt Elev 1005	N/A N/A N/A
--	------------------------	--	-------------------

VOR/DME-C

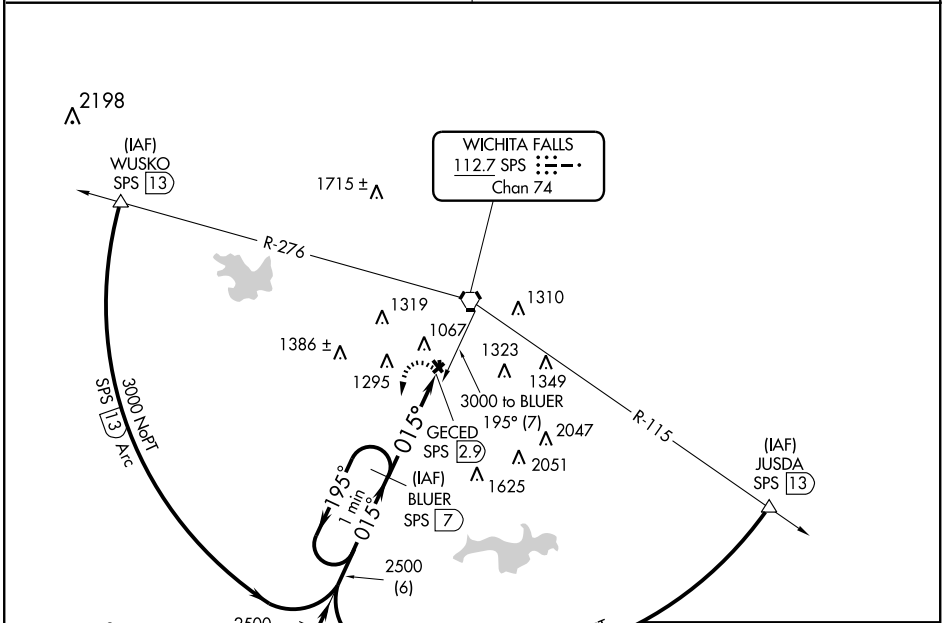
WICHITA FALLS/ WICHITA VALLEY (F14)

Visibility reduction by helicopters NA.
 Use Sheppard AFB/Wichita Falls Mun, TX altimeter setting;
 When not received, use Frederick Rgnl altimeter setting and
 increase all MDA 120 feet and Cat C visibility ¼ mile.
 Procedure NA at night.

MISSED APPROACH: Climbing left turn to 2700
 on SPS VORTAC R-195 to BLUER/SPS 7 DME
 and hold.

SHEPPARD APP CON *
118.2 292.3

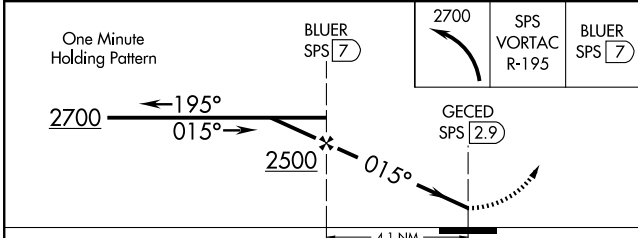
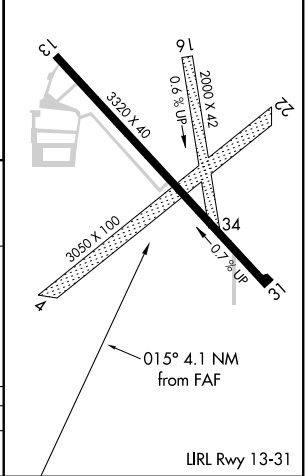
UNICOM
122.8 (CTAF)



SC-2, 31 MAY 2012 to 28 JUN 2012

SC-2, 31 MAY 2012 to 28 JUN 2012

ELEV 1005



CATEGORY	A	B	C	D
CIRCLING	1520-1	515 (600-1)	1680-2 675 (700-2)	NA

TAKE-OFF MINIMUMS AND (OBSTACLE) DEPARTURE PROCEDURES

12096

INSTRUMENT APPROACH PROCEDURE CHARTS

IFR TAKE-OFF MINIMUMS AND (OBSTACLE) DEPARTURE PROCEDURES

Civil Airports and Selected Military Airports

ALL USERS: Airports that have Departure Procedures (DPs) designed specifically to assist pilots in avoiding obstacles during the climb to the minimum enroute altitude, and/or airports that have civil IFR take-off minimums other than standard, are listed below. Take-off Minimums and Departure Procedures apply to all runways unless otherwise specified. Altitudes, unless otherwise indicated, are minimum altitudes in MSL.

DPs specifically designed for obstacle avoidance are referred to as Obstacle Departure Procedures (ODPs) and are described below in text, or published separately as a graphic procedure. If the (Obstacle) DP is published as a graphic procedure, its name will be listed below, and it can be found in either this volume (civil), or the applicable military volume, as appropriate. Users will recognize graphic obstacle DPs by the term "(OBSTACLE)" included in the procedure title; e.g., TETON TWO (OBSTACLE). If not specifically assigned a departure procedure (i.e., ODP, SID, or radar vector) as part of an IFR clearance, an ODP may be required to be flown for obstacle clearance, even though not specifically stated in the IFR clearance. When doing so in this manner, ATC should be informed when the ODP being used contains a specified route to be flown, restrictions before turning, and/or altitude restrictions.

Graphic DPs designed by ATC to standardize traffic flows, ensure aircraft separation and enhance capacity are referred to as "Standard Instrument Departures (SIDs)". SIDs also provide obstacle clearance and are published under the appropriate airport section. ATC clearance must be received prior to flying a SID.

CIVIL USERS NOTE: Title 14 Code of Federal Regulations Part 91 prescribes standard take-off rules and establishes take-off minimums for certain operators as follows: (1) Aircraft having two engines or less - one statute mile. (2) Aircraft having more than two engines - one-half statute mile. These standard minima apply in the absence of any different minima listed below.

MILITARY USERS NOTE: Civil (nonstandard) take-off minima are published below. For military take-off minima, refer to appropriate service directives.

NAME TAKE-OFF MINIMUMS

ABILENE, TX

ABILENE RGNL (ABI)

AMDT 2 07354 (FAA)

TAKE-OFF MINIMUMS: **Rwy 22**, 300-2½ or std. w/ min. climb of 233' per NM to 2200.

DEPARTURE PROCEDURE: **Rwy 17L**, climb heading 180° to 3200 before proceeding on course.

NOTE: **Rwy 4**, multiple trees beginning 1945' from DER, 872' left of centerline, up to 100' AGL/1859' MSL. Terrain 103' from DER, 59' right of centerline up to 0' AGL/1766' MSL. Terrain 121' from DER, 457' right of centerline, up to 0' AGL/1769' MSL.

Rwy 17L, tower 7 NM from DER, right of centerline up to 543' AGL/2903' MSL. Tower 6 NM from DER, right of centerline up to 400' AGL/2699' MSL. Tower 7.7 NM from DER, left of centerline, up to 749' AGL/2957' MSL. Multiple trees beginning 151' from DER, 158' left of centerline, up to 100' AGL/1879' MSL. Multiple trees beginning 149' from DER, 355' right of centerline, up to 100' AGL/1879' MSL. **Rwy 22**, tower 1.9 NM from DER, 284' left of centerline, up to 306' AGL/2050' MSL. Multiple trees beginning 119' from DER, 402' left of centerline up to 17' AGL/1769' MSL. Tower 4018' from DER, 225' right of centerline, up to 135' AGL/1869' MSL. Antenna on tower 1.9 NM from DER, 252' left of centerline, up to 306' AGL/2050' MSL.

NAME TAKE-OFF MINIMUMS

ABILENE RGNL (ABI) (CON'T)

Rwy 35L, tower 194' from DER, 516' right of centerline 100' AGL/1769' MSL. Multiple trees beginning 2047' from DER, 851' right of centerline, up to 100' AGL/1869' MSL. **Rwy 35R**, antenna 1154' from DER, 264' left of centerline 100' AGL/1821' MSL. Multiple trees beginning 2848' from DER, 242' left of centerline up to 100' AGL/1889' MSL. Multiple trees beginning 279' from DER, 328' right of centerline, up to 100' AGL/1889' MSL. Terrain 231' from DER, 66' left of centerline, up to 0' AGL/1805' MSL. Terrain 230' from DER, 190' right of centerline, up to 100' AGL/1805' MSL. **Rwy 17R**, multiple trees beginning 1013' from DER, 372' left of centerline, up to 100' AGL/1889' MSL. Multiple trees beginning 147' from DER, 370' right of centerline up to 100' AGL/1879' MSL.

AMARILLO, TX

RICK HUSBAND AMARILLO INTL

DEPARTURE PROCEDURE: **Rwy 22**, climb heading 218° to 4100 before turning northbound. **Rwy 31**, climbing right turn heading 360° to 5400 before turning westbound. NOTE: **Rwy 31**, sign 23' from departure end of runway, 257' right of centerline, 6' AGL/3605' MSL.

31 MAY 2012 to 28 JUN 2012

31 MAY 2012 to 28 JUN 2012

12096

TAKE-OFF MINIMUMS AND (OBSTACLE) DEPARTURE PROCEDURES



TAKE-OFF MINIMUMS AND (OBSTACLE) DEPARTURE PROCEDURES



12096

AMARILLO, TX (CON'T)

TRADEWIND (TDW)

AMDT 3 11321 (FAA)

TAKE-OFF MINIMUMS: **Rwys 5, 23**, NA - Environmental. **Rwy 35**, 300-1¼ or std. w/min. climb of 248' per NM to 4000.

DEPARTURE PROCEDURE: **Rwy 35**, climb heading 004° to 5500 before turning left.

NOTE: **Rwy 17**, fence beginning 14' from DER, left and right of centerline, up to 6' AGL/3645' MSL. Vehicle on road 57' from DER, left and right of centerline, up to 17' AGL/3656' MSL. Poles beginning 297' from DER, 331' right of centerline, up to 34' AGL/3673' MSL. Trees beginning 121' from DER, 181' right of centerline, up to 55' AGL/3675' MSL. Trees beginning 175' from DER, 306' left of centerline, up to 55' AGL/3688' MSL. **Rwy 35**, fences and signs beginning 18' from DER, left and right of centerline, up to 10' AGL/3659' MSL. Vehicle on road beginning 60' from DER, left and right of centerline, up to 17' AGL/3666' MSL. Power lines beginning 124' from DER, left and right of centerline, up to 50' AGL/3679' MSL. Trees beginning 168' from DER, 142' left of centerline, up to 55' AGL/3698' MSL. Trees beginning 60' from DER, 166' right of centerline, up to 55' AGL/3698' MSL. Tower 1.2 NM from DER, 4181' right of centerline, 300' AGL/3912' MSL. Tower 1.3 NM from DER, 2290' left of centerline, 250' AGL/3910' MSL.

ANDREWS, TX

ANDREWS COUNTY (E11)

AMDT 1 09239 (FAA)

TAKE-OFF MINIMUMS: **Rwy 20**, 400-2¼ or std. w/min. climb of 229' per NM to 3700.

DEPARTURE PROCEDURE: **Rwy 11**, climb heading 114° to 3600 before turning left. **Rwy 29**, climb heading 294° to 3600 before turning left.

NOTE: **Rwy 34**, antenna 1189' from DER, 588' left of centerline, 52' AGL/3236' MSL. Poles beginning 181' from DER, 470' left of centerline, up to 36' AGL/3210' MSL. Bush 471' from DER, 92' left of centerline, 7' AGL/3186' MSL. Tree 1207' from DER, 587' left of centerline, 44' AGL/3228' MSL. Bushes beginning 282' from DER, 305' right of centerline, up to 10' AGL/3189' MSL. Tree 4780' from DER, 895' right of centerline, 100' AGL/3304' MSL.

ARLINGTON, TX

ARLINGTON MUNI

DEPARTURE PROCEDURE: **Rwy 16**, climb heading 162° to 2500 before turning left. **Rwy 34**, climb heading 342° to 1400 before turning southeast bound.

NOTE: **Rwy 16**, multiple reils beginning 77' from departure end of runway, 127' right of centerline, 7' AGL/601' MSL. Multiple reils beginning 74' from departure end of runway, 126' left of centerline, 7' AGL/603' MSL. Tree 590' from departure end of runway, 480' right of centerline, 16' AGL/614' MSL. **Rwy 34**, tree 1083' from departure end of runway, 710' right of centerline, 35' AGL/670' MSL. Tree 705' from departure end of runway, 403' left of centerline, 38' AGL/654' MSL. Tree 231' from departure end of runway, 464' left of centerline, 35' AGL/642' MSL. Multiple trees beginning 1093' from departure end of runway, 415' right of centerline, up to 39' AGL/663' MSL.

Chart note: tower farm 7.2 NM southeast of airport up to 2549' MSL.

ATHENS, TX

ATHENS MUNI (F44)

ORIG 10154 (FAA)

NOTE: **Rwy 17**, trees beginning 209' from DER, 5' right of centerline, up to 89' AGL/561' MSL. Trees beginning 86' from DER, 4' left of centerline, up to 94' AGL/538' MSL. Catenary 864' from DER, left to right of centerline, 37' AGL/524' MSL. Buildings beginning 280' from DER, 343' right of centerline, up to 24' AGL/469' MSL. Fence beginning 209' from DER, 299' right of centerline, up to 6' AGL/446' MSL. Poles beginning 397' from DER, 6' right of centerline, up to 42' AGL/524' MSL. **Rwy 35**, trees beginning 112' from DER, 33' right of centerline, up to 81' AGL/511' MSL. Trees beginning 574' from DER, 26' left of centerline, up to 75' AGL/510' MSL. Catenary 889' from DER, 603' left of centerline, 34' AGL/475' MSL. Pole 892' from DER, 571' left of centerline, 35' AGL/475' MSL. Pole 692' from DER, 416' left of centerline, 32' AGL/470' MSL. Pole 549' from DER, 309' right of centerline, 28' AGL/455' MSL. Vehicle on road 199' from DER, 249' right of centerline, 16' AGL/451' MSL. Vehicle on road 574' from DER, 556' left of centerline, 16' AGL/456' MSL. Vehicle on road 619' from DER, 543' left of centerline, 16' AGL/455' MSL. Vehicle on road 336' from DER, 251' right of centerline, 16' AGL/449' MSL. Buildings beginning 198' from DER, 338' right of centerline, 14' AGL/450' MSL. Ground 208' from DER, 412' right of centerline, 443' MSL.

ATLANTA, TX

HALL-MILLER MUNI (ATA)

AMDT 2 12040 (FAA)

TAKE-OFF MINIMUMS: **Rwy 5**, 200-1¼ or std w/min. climb of 229' per NM to 500. **Rwy 23**, 300-1½.

DEPARTURE PROCEDURE: **Rwy 5**, climb heading 048° to 800 before turn left.

NOTE: **Rwy 5**, tower 4143' from DER, 677' left of centerline, up to 125' AGL/398' MSL. **Rwy 23**, trees beginning 1042' from DER, left and right of centerline, up to 100' AGL/489' MSL.

BIG SPRING, TX

BIG SPRING MC MAHON-WRINKLE (BPG)

AMDT 3 12068 (FAA)

TAKE-OFF MINIMUMS: **Rwy 6**, 400-1½ w/min. climb of 254' per NM to 3400, or std. w/min. climb of 399' per NM to 3100.

DEPARTURE PROCEDURE: **Rwy 6**, climb heading 060° to 3300 before turning right. **Rwy 17**, climb heading 175° to 3100 before turning left.

NOTE: **Rwy 6**, trees beginning 160' from DER, 177' right of centerline, up to 25' AGL/2628' MSL. Trees beginning 424' from DER, 221' left of centerline, up to 38' AGL/2739' MSL. Poles beginning 1569' from DER, 19' left of centerline, up to 36' AGL/2722' MSL. Poles beginning 1529' from DER, 178' right of centerline, up to 34' AGL/2628' MSL. Tank 1.2 NM from DER, 2179' left of centerline, 135' AGL/2859' MSL.

BONHAM, TX

JONES FIELD (F00)

AMDT 2 11237 (FAA)

DEPARTURE PROCEDURE: **Rwy 17**, climb heading 176° to 1100 before turning right.

NOTE: **Rwy 17**, trees 106' from DER, 293' right of centerline, 20' AGL/630' MSL. Trees 560' from DER, left and right of centerline, 30' AGL/630' MSL. T-L tower 868' from DER, 575' right of centerline, 38' AGL/655' MSL. Multiple power poles 1374' from DER, left and right of centerline, 45' AGL/655' MSL. **Rwy 35**, trees 1540' from DER, 858' left of centerline, 80' AGL/659' MSL. Trees 1660' from DER, 812' right of centerline, 80' AGL/699' MSL.

12096



TAKE-OFF MINIMUMS AND (OBSTACLE) DEPARTURE PROCEDURES





TAKE-OFF MINIMUMS AND (OBSTACLE) DEPARTURE PROCEDURES



12096

BORGER, TX

HUTCHINSON COUNTY (BGD)

AMDT 1 08157 (FAA)

TAKE-OFF MINIMUMS: **Rwy 17**, 200-1½ or std. w/min. climb of 421' per NM to 3400.NOTE: **Rwy 3**, tree 3200' from departure end of runway, 851' left of centerline, 100' AGL/3129' MSL. **Rwy 17**, pole 683' from departure end of runway, 396' right of centerline, 21' AGL/3090' MSL. Trees beginning 820' from departure end of runway, 279' right of centerline, up to 34' AGL/3093' MSL. Vehicle on road 219' from departure end of runway, 513' right to left of centerline, 15' AGL/3074' MSL. Vehicle on road 1141' from departure end of runway, 772' right to left of centerline, 17' AGL/3086' MSL. Trees beginning 1628' from departure end of runway, 207' left of centerline, up to 43' AGL/3112' MSL. Antenna 1427' from departure end of runway, 15' left of centerline, 46' AGL/3105' MSL. **Rwy 21**, bush 138' from departure end of runway, 109' right of centerline, 31' AGL/3040' MSL.**BOWIE, TX**

BOWIE MUNI (0F2)

ORIG 09071 (FAA)

NOTE: **Rwy 17**, tree 131' from DER, 311' right of centerline, 100' AGL/1169' MSL. Trees beginning 122' from DER, 313' left of centerline, up to 100' AGL/1199' MSL. **Rwy 35**, tree 418' from DER, 299' left of centerline, 100' AGL/1206' MSL. Vehicle on road 726' from DER, 471' left of centerline, 15' AGL/1131' MSL.**BRIDGEPORT, TX**

BRIDGEPORT MUNI (XBP)

AMDT 2 09351 (FAA)

TAKE-OFF MINIMUMS: **Rwy 18**, 400-2 or std. w/min. climb of 458' per NM to 1300. **Rwy 36**, 300-1¼ or std. w/min. climb of 427' per NM to 1200.NOTE: **Rwy 18**, trees beginning 2383' from DER, 504' right of centerline, up to 100' AGL/1169' MSL. Trees beginning 2438' from DER, 525' left of centerline, up to 100' AGL/1109' MSL. Tower 1.2 NM from DER, 664' left of centerline, 55' AGL/1046' MSL. Tower 1.2 NM from DER, 1121' left of centerline, 55' AGL/1042' MSL. **Rwy 36**, trees beginning 111' from DER, 21' right of centerline, up to 100' AGL/851' MSL. Trees beginning 607' from DER, 430' left of centerline, up to 100' AGL/1039' MSL. Hanger 12' from DER, 424' right of centerline, 17' AGL/827' MSL. Multiple poles and towers beginning 1064' from DER, 297' left of centerline, 43' AGL/969' MSL.**BROWNFIELD, TX**

TERRY COUNTY (BFE)

ORIG 09295 (FAA)

NOTE: **Rwy 2**, aircraft on taxiway beginning at DER, 188' left of centerline, up to 17' AGL/3281' MSL. Vehicle on roadway, 121' from DER, 519' right of centerline, 15' AGL/3269' MSL. Hangar 591' from DER, 333' left of centerline, 30' AGL/3289' MSL. Tree 950' from DER, 179' right of centerline, 34' AGL/3299' MSL. **Rwy 13**, vehicles on roadway beginning 71' from DER, 61' left of centerline, up to 15' AGL/3269' MSL. **Rwy 20**, tree 2937' from DER, 1108' right of centerline, 75' AGL/3329' MSL. **Rwy 31**, vehicles on roadway beginning at DER, 198' left of centerline, up to 15' AGL/3284' MSL. Aircraft on taxiway beginning at DER, 253' right of centerline, up to 17' AGL/3281' MSL. Vehicles on roadway beginning 299' from DER, 14' right of centerline up to 15' AGL/3284' MSL. Hangar 572' from DER, 597' right of centerline, 30' AGL/3299' MSL. Tree 1832' from DER, 233' right of centerline, 75' AGL/3344' MSL.**CADDO MILLS, TX**

CADDO MILLS MUNI

TAKE-OFF MINIMUMS: **Rwys 17L, 35R**, NA.**CANADIAN, TX**

HEMPHILL COUNTY

TAKE-OFF MINIMUMS: **Rwy 4**, 300-1¼ or std. with a min. climb of 282' per NM to 2700. **Rwy 18**, std. w/min. climb of 239' per NM to 3600, or 1400-3 for climb in visual conditions.DEPARTURE PROCEDURE: **Rwy 18**, for climb in visual conditions cross Hemphill County Airport at or above 3600 before proceeding on course. **Rwy 22**, climb heading 216° to 3000 before turning left.NOTE: **Rwy 4**, grain elevator 5728' from departure end of runway, 1384' left of centerline, 220' AGL/2580' MSL. Tower 1.1 NM from departure end of runway, 6' right of centerline, 123' AGL/2548' MSL. **Rwy 18**, terrain 361' from departure end of runway, 569' left of centerline, 0' AGL/2409' MSL.**CHILDRESS, TX**

CHILDRESS MUNI (CDS)

AMDT1 11069 (FAA)

NOTE: **Rwy 4**, trees beginning from 997' from DER, 4' right of centerline, up to 100' AGL/2049' MSL. Tree 1151' from DER, 93' left of centerline, 100' AGL/2049' MSL. **Rwy 18**, post 64' from DER, 49' right of centerline, 5' AGL/1958' MSL. Trees beginning from 1286' from DER, 630' right of centerline, up to 100' AGL/2008' MSL. **Rwy 22**, tree 4873' from DER, 231' left of centerline, 100' AGL/2069' MSL. Tree 5638' from DER, 1746' right of centerline, 100' AGL/2089' MSL. **Rwy 36**, tree 196' from DER, 442' right of centerline, 100' AGL/2049' MSL. Tree 578' from DER, 387' left of centerline, 100' AGL/2049' MSL.

31 MAY 2012 to 28 JUN 2012

31 MAY 2012 to 28 JUN 2012

12096



TAKE-OFF MINIMUMS AND (OBSTACLE) DEPARTURE PROCEDURES





TAKE-OFF MINIMUMS AND (OBSTACLE) DEPARTURE PROCEDURES



12096

CLEBURNE, TX

CLEBURNE RGNL (CPT)
ORIG 08045 (FAA)

NOTES: **Rwy 15**, Tree 484' from departure end of runway, 211' left of centerline, 100' AGL/959' MSL. Light pole 1329' from departure end of runway, 285' right of centerline, 30' AGL/889' MSL. **Rwy 33**, Trees and light pole beginning 355' from departure end of runway, 45' right of centerline, up to 100' AGL/979' MSL. Trees beginning 1631' from departure end of runway, 94' left of centerline, up to 100' AGL/979' MSL.

COMMERCE, TX

COMMERCE MUNI (2F7)
AMDT 2 10322 (FAA)

TAKE-OFF MINIMUMS: **Rwy 18**, 300-2 or std. w/min. climb of 213' per NM to 900.
DEPARTURE PROCEDURE: **Rwy 18**, climb heading 179° to 1100 before turning right.

NOTE: **Rwy 18**, vehicle on road 7' from DER, 345' left of centerline, 15' AGL/524' MSL. Trees 725' from DER, 481' right of centerline, up to 100' AGL/609' MSL. Power line beginning 1.4 NM from DER, 1425' left of centerline, up to 200' AGL/759' MSL. **Rwy 36**, vehicle on road 9' from DER, 307' right of centerline, 15' AGL/534' MSL. Terrain 15' from DER, 424' left of centerline, 519' MSL. Trees beginning 688' from DER, 127' right of centerline, up to 100' AGL/619' MSL. Vehicle on road 708' from DER, on centerline, 15' AGL/534' MSL. Trees beginning 4694' from DER, 107' right of centerline, up to 100' AGL/639' MSL.

CORSICANA, TX

C. DAVID CAMPBELL FLD-CORSICANA MUNI (CRS)
ORIG 11265 (FAA)

TAKE-OFF MINIMUMS: **Rwys 2,20**, NA - Turf.
NOTE: **Rwy 14**, trees beginning 188' from DER, 43' left and right of centerline, up to 48' AGL/480' MSL. Terrain beginning 64' from DER, 16' left and right of centerline, 440' MSL. Vehicle on road 201' from DER, 349' right of centerline, 15' AGL/446' MSL. Power lines beginning 1071' from DER, 749' left of centerline, 40' AGL/479' MSL. **Rwy 32**, trees beginning 208' from DER, 317' left and right of centerline, up to 51' AGL/500' MSL. Poles beginning 583' from DER, 384' right of centerline, up to 35' AGL/484' MSL. Bush, 70' from DER, 493' left of centerline, 11' AGL/460' MSL. Vehicle on road beginning 482' from DER, on runway centerline, 15' AGL/468' MSL.

CROSBYTON, TX

CROSBYTON MUNI (8F3)
ORIG 11237 (FAA)

NOTE: **Rwy 17**, trees beginning 421' from DER, 207' left of centerline, up to 55' AGL/3064' MSL. Tree 838' from DER, 704' right of centerline, 55' AGL/3069' MSL. **Rwy 35**, tree 2044' from DER, 1004' right of centerline, 55' AGL/3074' MSL.

DALHART, TX

DALHART MUNI

TAKE-OFF MINIMUMS: **Rwy 3**, 600-2 or std. with a min. climb of 250' per NM to 4400.

DALLAS, TX

ADDISON (ADS)
AMDT 5A 10182 (FAA)

TAKE-OFF MINIMUMS: **Rwy 15**, 400-2¼ or std. with a min. climb of 324' per NM to 1100.

NOTE: **Rwy 15**, multiple buildings beginning 1085' from DER, 21' left of centerline, up to 321' AGL/956' MSL. Building with antenna 1.9 NM from DER, 968' right of centerline, 345' AGL/975' MSL. Pole 666' from DER, 640' left of centerline, 60' AGL/681' MSL. Multiple trees beginning 721' from DER, 115' left of centerline, up to 40' AGL/675' MSL. Road, railroad beginning 268' from DER, 5' right of centerline, up to 23' AGL/655' MSL. Streetlights beginning 873' from DER, 488' left of centerline, up to 39' AGL/699' MSL. **Rwy 33**, multiple poles and trees beginning 640' from DER, 21' left of centerline, up to 60' AGL/709' MSL. Multiple buildings beginning 1225' from DER, 147' left of centerline, up to 37' AGL/697' MSL. Multiple buildings beginning 45' from DER, 458' right of centerline, up to 57' AGL/696' MSL. Multiple poles beginning 922' from DER, 186' right of centerline, up to 60' AGL/720' MSL.

COLLIN COUNTY RGNL AT MC KINNEY (TKI)
AMDT 1 09351 (FAA)

NOTE: **Rwy 17**, bush 29' from DER, 499' right of centerline, 5' AGL/591' MSL. Obstruction light on DME 400' from DER, 266' right of centerline, 16' AGL/602' MSL. Trees 784' from DER, 574' right of centerline, 39' AGL/625' MSL. **Rwy 35**, trees 1060' from DER, 634' right of centerline, 65' AGL/605' MSL. Trees beginning 1532' from DER, 632' left of centerline, up to 79' AGL/626' MSL.

DALLAS EXECUTIVE

TAKE-OFF MINIMUMS: **Rwy 17**, 400-2¼ or std. w/min. climb of 275' per NM to 1200.

DEPARTURE PROCEDURE: **Rwy 13**, climb via heading 129° to 2600 before turning westbound. **Rwy 17**, climb via heading 174° to 2600 before turning westbound. **Rwy 31**, climb via heading 309° to 1600 before turning southbound. **Rwy 35**, climb via heading 354° to 1600 before turning southbound.

NOTE: **Rwy 17**, tree 468' from departure end of runway, 454' left of centerline, 35' AGL/699' MSL. Tree 113' from departure end of runway, 516' right of centerline, 30' AGL/679' MSL. Tree 871' from departure end of runway, 405' left of centerline, 35' AGL/685' MSL. Tree 651' from departure end of runway, 303' right of centerline, 35' AGL/699' MSL. **Rwy 31**, tree 481' from departure end of runway, 552' right of centerline, 30' AGL/677' MSL. Tree 2978' from departure end of runway, 802' left of centerline, 46' AGL/732' MSL. **Rwy 35**, tree 534' from departure end of runway, 302' left of centerline, 34' AGL/671' MSL. Tree 745' from departure end of runway, 371' left of centerline, 35' AGL/672' MSL. Tree 972' from departure end of runway, 405' right of centerline, 35' AGL/675' MSL. **Rwy 13**, obstruction light on blast fence 109' from departure end of runway, 347' left of centerline, 6' AGL/658' MSL.

31 MAY 2012 to 28 JUN 2012

31 MAY 2012 to 28 JUN 2012

12096



TAKE-OFF MINIMUMS AND (OBSTACLE) DEPARTURE PROCEDURES





TAKE-OFF MINIMUMS AND (OBSTACLE) DEPARTURE PROCEDURES



12096

DALLAS, TX (CON'T)

DALLAS-LOVE FIELD (DAL)

AMDT 16 11293 (FAA)

TAKE-OFF MINIMUMS: **Rwy 13L**, std. with a min. climb of 290' per NM to 1700. **Rwy 13R**, std. w/min. climb of 315' per NM to 1700.

DEPARTURE PROCEDURE: **Rwy 18**, climb heading 180° to 1300 before turning left. **Rwy 31L**, climb heading 310° to 1200 before turning left. **Rwy 31R**, climb heading 310° to 1200 before turning left.

NOTE: **Rwy 18**, building 303' from DER, 354' right of centerline, 47' AGL/507' MSL. Trees beginning 775' from DER, 138' right of centerline, up to 50' AGL/536' MSL. Tree 1254' from DER, 399' left of centerline, 50' AGL/531' MSL. **Rwy 36**, tree 52' from DER, 390' left of centerline, 50' AGL/523' MSL. Building 898' from DER, 233' left of centerline 45' AGL/505' MSL. Trees beginning 433' from DER, 240' right of centerline up to 75' AGL/559' MSL. Trees 661' from DER, 95' left of centerline, up to 50' AGL/505' MSL. Transmission towers beginning 1025' from DER, left and right of centerline, up to 68' AGL/572' MSL. **Rwy 31L**, trees beginning 327' from DER, 374' right of centerline, up to 60' AGL/501' MSL. **Rwy 31R**, pole 38' from DER, 501' left of centerline, 27' AGL/487' MSL. Trees beginning 366' from DER, 552' right of centerline, up to 65' AGL/530' MSL. Pole 1531' from DER, 719' right of centerline, up to 61' AGL/521' MSL. **Rwy 13L**, trees, poles and electrical systems beginning 844' from DER, 515' left of centerline, up to 45' AGL/541' MSL. Crane 5270' from DER, 568' left of centerline, 130' AGL/630' MSL. **Rwy 13R**, poles and fences beginning 693' from DER, 601' right of centerline, up to 29' AGL/501' MSL. Sign 779' from DER, 669' left of centerline, 30' AGL/503' MSL. Trees beginning 1122' from DER, 670' left and right of centerline, up to 40' AGL/514' MSL. Sign 1424' from DER, 763' left of centerline, 45' AGL/516' MSL. Rod on stake 2234' from DER, 979' left of centerline, 65' AGL/537' MSL.

DALLAS-FORT WORTH, TX

DALLAS-FORT WORTH INTL (DFW)

AMDT 5 12096 (FAA)

TAKE-OFF MINIMUMS: **Rwy 35R**, 200 - 1 ½ or std. w/min. climb of 221' per NM to 800, or alternatively, with standard takeoff minimums and a normal 200' per NM climb gradient, takeoff must occur no later than 1700' prior to DER.

DEPARTURE PROCEDURE: **Rwy 35R**, climb heading 354° to 1200 before turning right.

NOTE: **Rwy 31L**, trees beginning 928' from DER, 724' left of centerline, up to 55' AGL/654' MSL. Tree 1229' from DER, 729' right of centerline, 28' AGL/637' MSL. Transmission pole 3402' from DER, 1398' right of centerline, 89' AGL/708' MSL. **Rwy 31R**, building 733' from DER, 632' left of centerline, 34' AGL/604' MSL. **Rwy 35R**, multiple buildings beginning 5466' from DER, 240' right of centerline, up to 173' AGL/714' MSL.

DECATUR, TX

DECATUR MUNI (LUD)

AMDT 2 08157 (FAA)

TAKE-OFF MINIMUMS: **Rwy 17**, std. with a min. climb of 290' per NM to 3500, or 1400-2½ for climb in visual conditions.

Rwy 35, std. with a min. climb of 315' per NM to 3500, or 1400-2½ for climb in visual conditions.

DEPARTURE PROCEDURE: **Rwys 17, 35**, For climb in visual conditions, cross Decatur Muni Airport at or above 2400, before proceeding on course.

12096

NOTE: **Rwy 17**, tower 5150' from departure end of runway, 896' right of centerline, 117' AGL/1173' MSL.



TAKE-OFF MINIMUMS AND (OBSTACLE) DEPARTURE PROCEDURES



DENTON, TX

DENTON MUNI (DTO)

AMDT 2 11069 (FAA)

NOTE: **Rwy 18**, antenna on building and trees beginning 8' from DER, 178' left and right of centerline, up to 74' AGL/665' MSL. **Rwy 36**, road, pole and trees beginning 10' from DER, 38' left and right of centerline, up to 61' AGL/684' MSL.

DUMAS, TX

MOORE COUNTY (DUX)

ORIG 10042 (FAA)

NOTE: **Rwy 1**, multiple poles beginning 766' from DER, 455' right of centerline, up to 31' AGL/3724' MSL. Multiple poles and buildings beginning 55' from DER, 438' left of centerline, up to 30' AGL/3723' MSL. Vehicle on road 47' from DER, on centerline, 15' AGL/3712' MSL. Trees 1240' from DER, 764' left of centerline, up to 100' AGL/3789' MSL. Trees 2049' from DER, 933' right of centerline, up to 100' AGL/3790' MSL. **Rwy 19**, trees 226' from DER, 538' right of centerline, up to 100' AGL/3809' MSL. Trees 228' from DER, 533' left of centerline, up to 100' AGL/3804' MSL. **Rwy 14**, tree 879' from DER, on centerline, 100' AGL/3788' MSL. **Rwy 32**, tree 1480' from DER, 15' left of centerline, 100' AGL/3794' MSL.

EASTLAND, TX

EASTLAND MUNI (ETN)

AMDT 1 11013 (FAA)

TAKE-OFF MINIMUMS: **Rwy 35**, std. w/min. climb of 215' per NM to 2300 or alternatively, with standard takeoff minimums and normal 200' per NM climb gradient, takeoff must occur no later than 1100' prior to DER, or 1000-3 for climb in visual conditions.

DEPARTURE PROCEDURE: **Rwy 17**, climb heading 175° to 2000' before turning East. **Rwy 35**, for climb in visual conditions: cross Eastland Muni at or above 2300 MSL before proceeding on course.

NOTE: **Rwy 17**, tree 48' from DER, 317' left of centerline, 27' AGL/1466' MSL, tree 521' from DER, 541' left of centerline, 34' AGL/1465' MSL. Tree 896' from DER, 408' left of centerline, 55' AGL/1482' MSL, pole 460' from DER, 439' left of centerline, 21' AGL/1457' MSL. Pole 640' from DER, 466' left of centerline, 31' AGL/1463' MSL. Pole 650' from DER, 277' left of centerline, 28' AGL/1465' MSL. Numerous trees and bushes beginning 15' from DER, 248' right of center line, up to 100' AGL/1488' MSL. Fence 81' from DER, 250' right of centerline, 4' AGL/1449' MSL. Train on rail 497' from DER left and right of centerline, 23' AGL/1463' MSL. **Rwy 35**, numerous trees beginning 38' from DER, right and left of center line, up to 100' AGL/1580' MSL. Numerous poles starting 1188' from DER, 64' right of centerline, up to 40' AGL/1588' MSL. Pole 1683' from DER, 51' left of centerline, 21' AGL/1568' MSL, pole 2610' from DER, 166' left of centerline, 20' AGL/1561' MSL. Catenary 1068' from DER, left to right of centerline, 52' AGL/1581' MSL, ground 76' from DER, left and right of centerline, 1565' MSL. Vehicle on road 1291' from DER, left and right of centerline, 15' AGL/1572 MSL, oil well 1287' from DER, 293' left of centerline, 16' AGL/1519' MSL, oil well 2033' from DER, 499' right of centerline, 14' AGL/1531' MSL.

31 MAY 2012 to 28 JUN 2012

31 MAY 2012 to 28 JUN 2012



TAKE-OFF MINIMUMS AND (OBSTACLE) DEPARTURE PROCEDURES



12096

ENNIS, TX

ENNIS MUNI (F41)

ORIG 11125 (FAA)

NOTE: **Rwy 15**, vehicle on road 362' from DER, 561' right of centerline, 15' AGL/494' MSL. Trees beginning 870' from DER, left and right of centerline, up to 100' AGL/579' MSL. **Rwy 33**, vehicles on road beginning 423' from DER, left and right of centerline, up to 15' AGL/534' MSL. Trees beginning 40' from DER, left and right of centerline, up to 100' AGL/609' MSL.

FLOYDADA, TX

FLOYDADA MUNI (41F)

ORIG 09295 (FAA)

NOTE: **Rwy 17**, silo 3320' from DER, 355' right of centerline, 149' AGL/3329' MSL. Building 3648' from DER, 248' right of centerline, 108' AGL/3289' MSL. **Rwy 35**, road and vehicle beginning 525' from DER, 19' left and right of centerline, up to 15' AGL/3202' MSL.

FOLLETT, TX

FOLLETT-LIPSCOMB COUNTY (T93)

ORIG 10154 (FAA)

NOTE: **Rwy 17**, tree 3005' from DER, 346' right of centerline, 50' AGL/2689' MSL. Tree 444' from DER, 595' left of centerline, 50' AGL/2639' MSL. Vehicle 546' from DER, 350' left of centerline, 15' AGL/2624' MSL. **Rwy 35**, tree 643' from DER, 624' right of centerline, 50' AGL/2579' MSL.

FORT WORTH, TX

BOURLAND FIELD (50F)

ORIG 08269 (FAA)

TAKE-OFF MINIMUMS: **Rwy 17**, std. w/ min. climb of 453' per NM to 1500 or 300-1 and min. climb of 211' per NM to 1500 or 900-2½ for climb in visual conditions.

DEPARTURE PROCEDURE: **Rwy 17**, for climb in visual conditions: cross Bourland Field at or above 1600 before proceeding on course.

NOTE: **Rwy 17**, trees beginning 65' from departure end of runway, 8' left of centerline, up to 30' AGL/969' MSL. **Rwy 35**, terrain beginning 15' from departure end of runway, 9' right of centerline, up to 981' MSL. Terrain beginning 91' from departure end of runway, 36' left of centerline, up to 959' MSL. Vehicle on road 276' from departure end of runway, 346' right of centerline, 17' AGL/869' MSL.

FORT WORTH, TX (CON'T)

FORT WORTH ALLIANCE

TAKE-OFF MINIMUMS: **Rwy 16L**, 300-2¼ or std. w/ min. climb of 208' per NM to 1100, or alternatively, w/ standard takeoff minimums and a normal 200'/NM climb gradient. Takeoff must occur no later than 1400' prior to departure end of runway. **Rwy 16R**, 300-2¼ or std. w/ min. climb of 210' per NM to 1100, or alternatively, w/ standard takeoff minimums and a normal 200'/NM climb gradient, takeoff must occur no later than 1500' prior to departure end of runway.

DEPARTURE PROCEDURE: **Rwy 16R**, climb heading 163° to 1200 before turning right.

NOTE: **Rwy 16L**, light pole 1285' from departure end of runway, 689' left of centerline, 48' AGL/697' MSL. Water tower 1.8 NM from departure end of runway, 3122' right of centerline, 148' AGL/954' MSL. **Rwy 16R**, fence 4' from departure end of runway, 250' right of centerline, 12' AGL/669' MSL. Water tower 1.8 NM from departure end of runway, 2521' right of centerline, 148' AGL/954' MSL. Tower 1.5 NM south of departure end of runway, 4138' right of centerline, 203' AGL/1002' MSL. **Rwy 34L**, fence 8' from departure end of runway, 250' left of centerline, 6' AGL/719' MSL. Railroad 421' from departure end of runway, 409' left of centerline, 23' AGL/738' MSL. **Rwy 34R**, antenna 218' from departure end of runway, 146' left of centerline, 28' AGL/728' MSL.

FORT WORTH MEACHAM INTL

TAKE-OFF MINIMUMS: **Rwy 9**, 300-1½ or std. w/ min. climb of 216' per NM to 1000, or alternatively, w/ standard takeoff minimums and a normal 200'/NM climb gradient, takeoff must occur no later than 1500' prior to departure end of runway. **Rwy 34**, 300-2 or std. w/ min. climb of 222' per NM to 1100, or alternatively, w/ standard takeoff minimums and a normal 200'/NM climb gradient, takeoff must occur no later than 1900' prior to departure end of runway.

DEPARTURE PROCEDURE: **Rwy 9**, climb heading 092° to 2000 before proceeding on course. **Rwys 16, 17**, climb heading 164° to 2000 before proceeding on course.

NOTE: **Rwy 9**, windsock 293' from departure end of runway, 354' left of centerline, 51' AGL/721' MSL. Sign on building 481' from departure end of runway, 407' right of centerline, 39' AGL/702' MSL. Sign 2448' from departure end of runway, 540' left of centerline, 75' AGL/742' MSL. Grain elevators beginning 7085' from departure end of runway, 2191' left of centerline, 229' AGL/877' MSL. **Rwy 17**, bush 13' from departure end of runway, 160' right of centerline, 21' AGL/674' MSL. Antenna 953' from departure end of runway, 394' left of centerline, 72' AGL/722' MSL. Hangar 1380' from departure end of runway, 744' left of centerline, 43' AGL/703' MSL. **Rwy 27**, tree 239' from departure end of runway, 492' left of centerline, 35' AGL/685' MSL. **Rwy 34**, multiple trees 974' from departure end of runway, 62' right of centerline, up to 47' AGL/746' MSL. Grain elevator 1.52 NM from departure end of runway, 2775' right of centerline, 254' AGL/969' MSL. **Rwy 35**, tree 1' from departure end of runway, 248' left of centerline, 40' AGL/690' MSL. Tree 567' from departure end of runway, 225' right of centerline, 45' AGL/699' MSL. Bush 55' from departure end of runway, 143' left of centerline, 21' AGL/681' MSL. Obstruction light on dam 1359' from departure end of runway, 1' right of centerline, 46' AGL/706' MSL.

31 MAY 2012 to 28 JUN 2012

31 MAY 2012 to 28 JUN 2012

12096



TAKE-OFF MINIMUMS AND (OBSTACLE) DEPARTURE PROCEDURES





TAKE-OFF MINIMUMS AND (OBSTACLE) DEPARTURE PROCEDURES



12096

FORT WORTH, TX (CON'T)

FORT WORTH SPINKS

TAKE-OFF MINIMUMS: **Rwys 17L, 35R**, NA.
(Environmental)

DEPARTURE PROCEDURE: **Rwy 17R** climb heading 173° to 1200 before turning right.

NOTE: **Rwy 17R**, tree 4909' from departure end of runway, 1556' left of centerline, 60' AGL/830' MSL.

FORT WORTH NAS JRB (CARSWELL
FLD)(KNFW)

FORT WORTH, TX 10014

Rwy 17, Cross DER at or above 6' AGL/656' MSL.

TAKE-OFF OBSTACLES: **Rwy 17**, rising terrain up to 670' MSL, 200'-600' from DER, 500'-560' right of centerline.

GAINESVILLE, TX

GAINESVILLE MUNI (GLE)

ORIG 09127 (FAA)

NOTE: **Rwy 17**, trees and poles beginning 1' from DER, 472' right and left of centerline, up to 25' AGL/819' MSL.

Rwy 30, taxiways beginning 651' from DER, crossing centerline left to right 859' MSL. Trees and terrain beginning 2' from DER, 14' left and right of centerline, up to 64' AGL/890' MSL. **Rwy 35**, terrain, trees, poles, road, and vehicle beginning 149' from DER, 51' left of centerline, up to 95' AGL/940' MSL. Terrain and poles beginning 13' from DER, 85' right of centerline, up to 37' AGL/882' MSL.

GILMER, TX

FOX STEPHENS FIELD-GILMER MUNI (JXI)

ORIG 11293 (FAA)

DEPARTURE PROCEDURE: **Rwy 18**, climb heading 177° to 1000 before turning left.

NOTE: **Rwy 18**, trees beginning abeam the DER left and right of centerline, up to 100' AGL/500' MSL. **Rwy 36**, trees beginning abeam the DER left and right of centerline, up to 50' AGL/505' MSL.

GLADEWATER, TX

GLADEWATER MUNI (07F)

AMDT 1 11153 (FAA)

TAKE-OFF MINIMUMS: **Rwy 17**, 300-1½ or std. w/min. climb of 285' per NM to 600. **Rwy 32**, 300-1. **Rwy 35**, Std. w/min. climb of 280' per NM to 1300 or 1100-2½ for climb in visual conditions.

DEPARTURE PROCEDURE: **Rwy 32**, climb heading 320° to 1100 before turning right. **Rwy 35**, for climb in visual conditions cross Gladewater Municipal Airport at or above 1200 before proceeding on course.

NOTE: **Rwy 14**, vehicles on roadway beginning 450' from DER, left and right of centerline, up to 17' AGL/311' MSL. Trees beginning 770' from DER, left and right of centerline, up to 100' AGL/394' MSL. Power lines 3524' from DER, left to right of centerline, 150' AGL/420' MSL. **Rwy 17**, vehicles on roadway beginning 212' from DER, left and right of centerline, up to 17' AGL/311' MSL. Trees beginning 624' from DER, left and right of centerline, up to 100' AGL/509' MSL. Power lines 1807' from DER, left to right of centerline, 150' AGL/439' MSL. **Rwy 32**, trees beginning 12' from DER, left and right of centerline, up to 100' AGL/429' MSL. **Rwy 35**, trees beginning 47' from DER, left and right of centerline, up to 100' AGL/429' MSL. Power lines 1.4 NM from DER, 844' right of centerline, 75' AGL/520' MSL.

12096



TAKE-OFF MINIMUMS AND (OBSTACLE) DEPARTURE PROCEDURES



GRAFORD, TX

POSSUM KINGDOM (F35)

ORIG-A 10154 (FAA)

TAKE-OFF MINIMUMS: **Rwy 20**, 400-2½ or std. w/a min. climb of 212' per NM to 1500 or alternatively, with standard takeoff minimums and a normal 200' per NM climb gradient, takeoff must occur no later than 1600' prior to DER.

DEPARTURE PROCEDURE: **Rwy 20**, climb heading 204° to 1500 before turning left.

NOTE: **Rwy 2**, trees beginning 31' from DER, 22' left of centerline, up to 100' AGL/1099' MSL. Trees beginning 1023' from DER, 114' right of centerline, up to 100' AGL/1129' MSL. **Rwy 20**, vehicle on roadway 116' from DER, 498' right of centerline, 15' AGL/1024' MSL. Trees beginning 494' from DER, 126' right of centerline, up to 100' AGL/1109' MSL. Trees beginning 977' from DER, 115' left of centerline, up to 100' AGL/1109' MSL. Trees beginning 2.29 miles from DER, 1679' left of centerline, up to 100' AGL/1329' MSL.

GRAHAM, TX

GRAHAM MUNI

DEPARTURE PROCEDURE: **Rwys 17, 21**, climb runway heading to 2000 before proceeding on course.

NOTE: **Rwy 17**, light pole 21' from departure end of runway, 195' left of centerline, 30' AGL/1141' MSL. Light pole 86' from departure end of runway, 381' left of centerline, 50' AGL/1168' MSL.

GRANBURY, TX

GRANBURY RGNL (GDJ)

AMDT 2 11125 (FAA)

TAKE-OFF MINIMUMS: **Rwy 14**, 300-1.

DEPARTURE PROCEDURE: **Rwy 14**, climb heading 144° to 1700 before turning right.

NOTE: **Rwy 14**, vehicles on road beginning 1020' from DER, on centerline, 15' AGL/814' MSL. Trees and power poles beginning at DER, 75' right of centerline, up to 100' AGL/879' MSL. Trees, power poles, light poles and vehicles on road beginning at DER, 251' left of centerline, up to 100' AGL/899' MSL. **Rwy 32**, train on railroad tracks, transmission poles and tree beginning 339' from DER, 107' right of centerline, 76' AGL/845' MSL. Trees, vehicles on road and bush beginning 14' from DER, 198' left of centerline, up to 46' AGL/815' MSL.

GRAND PRAIRIE, TX

GRAND PRAIRIE MUNI (GPM)

AMDT 4 09295 (FAA)

DEPARTURE PROCEDURE: **Rwy 17**, climbing right turn to 2000 via heading 200° and TTT R-180 to NINAE/ TTT 24 DME before proceeding on course. DME Required. **Rwy 35**, climb heading 356° to 1400 before turning south.

NOTE: **Rwy 17**, antenna 190' from DER, 456' right of centerline, 26' AGL/615' MSL. Road, multiple poles and signs beginning 570' from DER, 410' right of centerline, up to 31' AGL/620' MSL. Tree 1506' from DER, 517' right of centerline, 37' AGL/617' MSL.

Rwy 35, tree 837' from DER, 204' left of centerline, up to 100' AGL/665' MSL. Pole 2687' from DER, 122' left of centerline, up to 75' AGL/653' MSL.



TAKE-OFF MINIMUMS AND (OBSTACLE) DEPARTURE PROCEDURES



12096

GREENVILLE, TX

MAJORS (GVT)
AMDT 1 08269 (FAA)

NOTE: **Rwy 17**, trees beginning 1832' from departure end of runway, 397' right of centerline, up to 49' AGL/578' MSL.

GRUVER, TX

GRUVER MUNI (E19)
ORIG 11293 (FAA)

NOTE: **Rwy 2**, fence beginning 10' from DER, 284' right of centerline, 4' AGL/3191' MSL. **Rwy 20**, vehicle on road 87' from DER, 467' left of centerline, 15' AGL/3219' MSL. Fence beginning 22' from DER, 204' right of centerline, 4' AGL/3209' MSL.

HASKELL, TX

HASKELL MUNI

TAKE-OFF MINIMUMS: **Rwy 18**, 600-2 or std. with a min. climb of 340' per NM to 2300.

DEPARTURE PROCEDURE: **Rwy 18**, climb runway heading to 2300 before proceeding on course.

HENDERSON, TX

RUSK COUNTY (RFI)

AMDT 2 10098 (FAA)

TAKE-OFF MINIMUMS: **Rwy 12**, 300-1. **Rwy 30**, 300-1½ or std. w/ min. climb of 282' per NM to 700.

DEPARTURE PROCEDURE: **Rwy 12**, climb heading 123° to 1100 before turning northbound. **Rwy 30**, climb heading 303° to 2100 before turning northbound.

Rwy 35, climb heading 347° to 1900 before turning westbound.

NOTE: **Rwy 12**, multiple trees beginning 143' from DER, 440' right of centerline, up to 100' AGL/549' MSL.

Multiple trees beginning 237' from DER, 59' left of centerline, up to 100' AGL/609' MSL. Vehicle on road beginning 652' from DER, 401' left of centerline, up to 15' AGL/464' MSL. Terrain beginning 82' from DER, 18' right of centerline 447' MSL. terrain beginning 291' from DER, 132' left of centerline, 506' MSL. **Rwy 17**, multiple trees beginning 399' from DER, 86' right of centerline, up to 100' AGL/539' MSL. Multiple trees beginning 163' from DER, 103' left of centerline, up to 100' AGL/549' MSL. **Rwy 30**, multiple trees beginning 640' from DER, 116' right of centerline, up to 100' AGL/539' MSL.

Multiple trees beginning 478' from DER, 141' left of centerline, up to 100' AGL/539' MSL. Terrain beginning 41' from DER, 334' right of centerline, 0' AGL/437' MSL. Terrain beginning 102' from DER, 459' left of centerline, 0' AGL/437' MSL. **Rwy 35**, vehicle on road beginning 145' from DER, 333' right of centerline, up to 15' AGL/454' MSL. Trees beginning 1155' from DER, 353' right of centerline, up to 100' AGL/549' MSL. Trees beginning 158' from DER, 269' left of centerline, up to 100' AGL/539' MSL.

HEREFORD, TX

HEREFORD MUNI (HRX)
ORIG 10042 (FAA)

TAKE-OFF MINIMUMS: **Rwys 14, 32**, NA-Environmental.

NOTE: **Rwy 2**, tree 68' from DER, 495' left of centerline, 50' AGL/3834' MSL. Trees beginning 280' from DER, 535' right of centerline, up to 50' AGL/3834' MSL. Trees beginning 984' from DER, 504' left of centerline, up to 50' AGL/3834' MSL. **Rwy 20**, trees beginning 61' from DER, 461' right of centerline, up to 50' AGL/3839' MSL. Trees beginning 497' from DER, 606' left of centerline, up to 50' AGL/3839' MSL. Tree 1603' from DER, 760' right of centerline, 50' AGL/3829' MSL.

HIGGINS, TX

HIGGINS-LIPSCOMB COUNTY (1X1)
ORIG 10154 (FAA)

NOTE: **Rwy 36**, vehicles on road beginning at DER, 225' left of centerline and 317' right of centerline, up to 15' AGL/2594' MSL. Trees beginning 427' from DER, on centerline, up to 60' AGL/2639' MSL.

HILLSBORO, TX

HILLSBORO MUNI

TAKE-OFF MINIMUMS: **Rwy 16**, 600-3 or std. w/ min. climb of 250' per NM to 1500, or 1100-2½ for climb in visual conditions.

DEPARTURE PROCEDURE: **Rwy 16**, for climb in visual conditions: Cross Hillsboro Muni Airport at or above 1600 before proceeding on course.

LANCASTER, TX

LANCASTER RGNL (LNC)
AMDT 2 10322 (FAA)

TAKE-OFF MINIMUMS: **Rwy 31**, 200-1½ or std. w/ min. climb of 221' per NM to 800, or alternatively, with standard takeoff minimums and a normal 200' per NM climb gradient, takeoff must occur no later than 1600' prior to DER.

DEPARTURE PROCEDURE: **Rwy 31**, climb heading 314° to 1800 before turning left.

NOTE: **Rwy 13**, tree 1460' from DER, 120' left of centerline, 58' AGL/521' MSL. **Rwy 31**, tree 886' from DER, 637' right of centerline, 35' AGL/536' MSL. Trees beginning 1133' from DER, 552' left of centerline, up to 45' AGL/541' MSL. Vehicle on roadway, 806' from DER, 694' left of centerline, up to 17' AGL/526' MSL. Vehicle on roadway, 895' from DER, 699' right of centerline, up to 17' AGL/526' MSL. Poles beginning 5613' from DER, 1171' right of centerline, up to 135' AGL/661' MSL.

31 MAY 2012 to 28 JUN 2012

31 MAY 2012 to 28 JUN 2012

12096



TAKE-OFF MINIMUMS AND (OBSTACLE) DEPARTURE PROCEDURES





TAKE-OFF MINIMUMS AND (OBSTACLE) DEPARTURE PROCEDURES



12096

LEVELLAND, TX

LEVELLAND MUNI (LLN)

AMDT 4 11013 (FAA)

TAKE-OFF MINIMUMS: **Rwy 26**, std. w/ min. climb of 255' per NM to 4300 or 900-3 for climb in visual conditions. **Rwy 35**, 400-2 or std. w/ min. climb of 250' per NM to 4000.

DEPARTURE PROCEDURE: **Rwy 26**, for climb in visual conditions cross Levelland Muni airport at or above 4400 before proceeding on course.

NOTE: **Rwy 8**, tree 61' from DER, 451' left of centerline, 55' AGL/3564' MSL. **Rwy 26**, pole 53' from DER, 308' right of centerline, 24' AGL/3543' MSL. Tree 265' from DER, 414' right of centerline, 31' AGL/3550' MSL. **Rwy 17**, vehicle on road 4' from DER, 387' left of centerline, 15' AGL/3522' MSL. Vehicle on road 205' from DER, 388' left of centerline, 15' AGL/3521' MSL. Tree 1291' from DER, 188' right of centerline, 55' AGL/3564' MSL. **Rwy 26**, building 1271' from DER, 811' left of centerline, 80' AGL/3593' MSL. **Rwy 35**, building 124' from DER, 492' left of centerline, 29' AGL/3518' MSL. Poles beginning 1186' from DER, 235' left of centerline, up to 54' AGL/3543' MSL. Trees beginning 1250' from DER, left and right of centerline, up to 55' AGL/3561' MSL.

LONGVIEW, TX

EAST TEXAS RGNL (GGG)

AMDT 1 08325 (FAA)

NOTE: **Rwy 13**, multiple trees 720' from departure end of runway, 547' left of centerline, up to 50' AGL/404' MSL. Multiple trees 1381' from departure end of runway, 600' right of centerline, up to 55' AGL/409' MSL. **Rwy 18**, multiple trees beginning 790' from departure end of runway, left and right of centerline, up to 94' AGL/459' MSL. **Rwy 31**, tree 1489' from departure end of runway, 842' left of centerline, 49' AGL/406' MSL. Tree 1737' from departure end of runway, 755' right of centerline, 63' AGL/420' MSL. **Rwy 36**, multiple trees beginning 1590' from departure end of runway, 520' left of centerline, up to 84' AGL/438' MSL. Tree 2384' from departure end of runway, 18' right of centerline, 65' AGL/419' MSL.

LUBBOCK, TX

LUBBOCK PRESTON SMITH INTL (LBB)

ORIG 10098 (FAA)

NOTE: **Rwy 8**, terrain 7' from DER, 353' left of centerline, 3256' MSL. **Rwy 17L**, Vehicle on road 556' from DER, 162' left of centerline, up to 15' AGL/3279' MSL. **Rwy 26**, aircraft on taxiway 568' from DER, 318' left and right of centerline, up to 42' AGL/3296' MSL. **Rwy 35R**, rod on ATCT 2330' from DER, 877' left of centerline, 136' AGL/3379' MSL. Aircraft on taxiway 219' from DER, 423' left and right of centerline, up to 42' AGL/3291' MSL.

MARSHALL, TX

HARRISON COUNTY (ASL)

ORIG 12040 (FAA)

TAKE-OFF MINIMUMS: **Rwy 2**, 300-1 or std w/ min. climb of 440' per NM to 600. **Rwy 33**, 300-1¼.

NOTE: **Rwy 2**, trees beginning 207' from DER, left and right of centerline, up to 100' AGL/439' MSL. Trees beginning 1281' from DER, 371' right of centerline, up to 100' AGL/489' MSL. Trees beginning 3102' from DER, 163' left of centerline, up to 100' AGL/509' MSL. Power lines beginning 3119' from DER, left and right of centerline, up to 120' AGL/509' MSL. **Rwy 15**, trees beginning 81' from DER, 472' right of centerline, up to 94' AGL/394' MSL. Trees beginning 180' from DER. 212' left of centerline, up to 90' AGL/410' MSL. Trees beginning 1872' from DER, left and right of centerline, up to 121' AGL/401' MSL. **Rwy 20**, numerous trees, buildings, and poles beginning 31' from DER, left and right of centerline, up to 100' AGL/469' MSL. **Rwy 33**, trees beginning 264' from DER, left and right of centerline, up to 100' AGL/459' MSL. Light poles beginning 573' from DER, 365' left of centerline, up to 120' AGL/509' MSL. Power lines beginning 1649' from DER, left and right of centerline, up to 120' AGL/509' MSL. Trees beginning 1953' from DER, left and right of centerline, up to 100' AGL/529' MSL.

MESQUITE, TX

MESQUITE METRO

DEPARTURE PROCEDURE: **Rwy 17**, climb heading 175° to 900 before turning left.

NOTE: **Rwy 17**, multiple trees, sign and fences beginning 10' from departure end of runway, 362' left of centerline, up to 35' AGL/478' MSL. **Rwy 35**, hangar 53' from departure end of runway, 497' left of centerline, 23' AGL/470' MSL. Multiple trees and poles beginning 999' from departure end of runway, 708' left of centerline, up to 44' AGL/483' MSL. Bush 45' from departure end of runway, 466' right of centerline, 10' AGL/457' MSL. Pole 814' from departure end of runway, 288' right of centerline, 27' AGL/467' MSL. Construction equipment 892' from departure end of runway, 628' right of centerline, 59' AGL/489' MSL.

MIDLOTHIAN WAXAHACHIE, TX

MID-WAY RGNL (JWY)

AMDT 1 11069 (FAA)

DEPARTURE PROCEDURE: **Rwy 18**, climb runway heading to 2000 before turning North. **Rwy 36**, climb runway heading 3600 before turning West.

NOTE: **Rwy 18**, multiple poles, trees, and towers beginning 159' from DER, 465' right of centerline, up to 39' AGL/708' MSL. Tree 956' from DER, 736' left of centerline, 69' AGL/722' MSL. Trees 971' from DER, 594' left of centerline, 71' AGL/714' MSL. **Rwy 36**, trees 1325' from DER, 643' left of centerline, 37' AGL/765' MSL.

MINEOLA, TX

MINEOLA WISENER FIELD (3F9)

ORIG 11069 (FAA)

TAKE-OFF MINIMUMS: **Rwys 17, 35**, NA-Obstacles.

31 MAY 2012 to 28 JUN 2012

31 MAY 2012 to 28 JUN 2012

12096



TAKE-OFF MINIMUMS AND (OBSTACLE) DEPARTURE PROCEDURES





TAKE-OFF MINIMUMS AND (OBSTACLE) DEPARTURE PROCEDURES



12096

MINEOLA-QUITMAN, TX

WOOD COUNTY

NOTE: **Rwy 18**, trees 336' from departure end of runway, 484' right of centerline, 100' AGL/549' MSL. Trees 775' from departure end of runway 339' right of centerline, 100' AGL/559' MSL. Trees 942' from departure end of runway, 460' right of centerline, 100' AGL/559' MSL. Trees 23' from departure end of runway, 239' right of centerline, 100' AGL/534' MSL. Trees 33' from departure end of runway, 495' right of centerline, 100' AGL/534' MSL. Trees 239' from departure end of runway, 453' left of centerline, 100' AGL/539' MSL. Trees 11' from departure end of runway, 474' left of centerline, 100' AGL/529' MSL. Trees 16' from departure end of runway, 253' left of centerline, 100' AGL/529' MSL. Terrain 932' from departure end of runway, 204' right of centerline, 0' AGL/460' MSL. Terrain 326' from departure end of runway, 228' right of centerline, 0' AGL/443' MSL. Terrain 912' from departure end of runway, 308' left of centerline, 0' AGL/457' MSL. Terrain 629' from departure end of runway, 216' right of centerline, 0' AGL/450' MSL. Terrain 639' from departure end of runway, 472' right of centerline, 0' AGL/450' MSL. Terrain 922' from departure end of runway, 52' left of centerline, 0' AGL/457' MSL. Terrain 14' from departure end of runway, 17' left of centerline, 0' AGL/434' MSL. **Rwy 36**, trees 1 foot from departure end of runway, 240' right of centerline, 100' AGL/509' MSL. Trees 780' from departure end of runway, on centerline, 100' AGL/509' MSL. Trees 450' from departure end of runway, 270' left of centerline, 100' AGL/499' MSL. Trees 450' from departure end of runway, 350' right of centerline, 100' AGL/479' MSL.

MINERAL WELLS, TX

MINERAL WELLS

TAKE-OFF MINIMUMS: **Rwy 31**, 500-3 or std. with a min. climb of 220' per NM to 1600.
NOTE: **Rwy 31**, cross departure end of runway at or above 35' AGL/948' MSL.

MOUNT PLEASANT, TX

MOUNT PLEASANT RGNL (OSA)

ORIG 09015 (FAA)

TAKE-OFF MINIMUMS: **Rwy 35**, 300-1½ or std. w/ min. climb of 309' per NM to 700, or alternatively, with standard take-off minimums and a normal 200' per NM climb gradient, take-off must occur no later than 1,600' prior to departure end of runway.
NOTE: **Rwy 17**, trees 1231' from departure end of runway, 679' right of centerline, 100' AGL/399' MSL. **Rwy 35**, tower 1.04 NM from departure end of runway, 1261' right of centerline, 180' AGL/539' MSL. Trees 695' from departure end of runway, 614' left of centerline, 100' AGL/469' MSL.

MOUNT VERNON, TX

FRANKLIN COUNTY (F53)

AMDT 1 11013 (FAA)

TAKE-OFF MINIMUMS: **Rwy 13**, 400-2½ or std. w/ min. climb of 238' per NM to 900.

NOTE: **Rwy 13**, trees beginning 1598' from DER, 84' left of centerline, up to 100' AGL/529' MSL. Tower and trees beginning 2889' from DER, 1022' right of centerline, up to 280' AGL/780' MSL. **Rwy 31**, trees beginning 446' from DER, 175' left of centerline, up to 100' AGL/479' MSL. Tower and trees beginning 3439' from DER, 452' right of centerline, up to 113' AGL/500' MSL.

PADUCAH, TX

DAN E. RICHARDS MUNI (3F6)

ORIG 11349 (FAA)

TAKE-OFF MINIMUMS: **Rwy 35**, 300-2 or std. w/ min. climb of 238' per NM to 2400.

DEPARTURE PROCEDURE: **Rwy 35**, climb heading 350° to 2400 before turning left.

NOTE: **Rwy 17**, fence line beginning abeam DER, 100' right of centerline, 4' AGL/1853' MSL. Vehicles on road beginning 90' from DER, 379' left of centerline. up to 15' AGL/1864' MSL. Power poles beginning 184' from DER, 295' left of centerline, up to 50' AGL/1899' MSL. Tree 717' from DER, 46' right of centerline, 21' AGL/1870' MSL. Trees beginning 1072' from DER, 779' left of centerline, up to 100' AGL/1949' MSL.

Rwy 35, berm abeam DER, 90' left of centerline, 1864' MSL. Fence line beginning abeam DER, 105' left of centerline, 5' AGL/1864' MSL. Power poles beginning 114' from DER, left and right of centerline, up to 50' AGL/1909' MSL. Vehicles on road beginning 773' from DER, 690' left of centerline, up to 17' AGL/1886' MSL. Trees beginning 4572' from DER, 346' left of centerline, up to 100' AGL/1989' MSL.

PANHANDLE, TX

PANHANDLE-CARSON COUNTY (T45)

ORIG 11181 (FAA)

NOTE: **Rwy 35**, vehicle on road 95' from DER, 270' right of centerline, up to 15' AGL/3464' MSL. Vehicle on road 218' from DER, up to 10' AGL/3466' MSL. **Rwy 17**, vehicle on road 77' from DER, 228' right of centerline, up to 15' AGL/3469' MSL. Vehicle on road 279' from DER, 277' left of centerline, up to 15' AGL/3464' MSL. Electric pole 512' from DER 253' left of centerline, up to 55' AGL/3509' MSL. House 650' from DER, 133' left of centerline, up to 20' AGL/3469' MSL.

PARIS, TX

COX FIELD

NOTE: **Rwy 17**, multiple trees beginning 88' from departure end of runway, 299' right of centerline, up to 50' AGL/558' MSL. **Rwy 35**, bushes and pole beginning 406' from departure end of runway, 402' left of centerline up to 35' AGL/573' MSL. Multiple trees beginning 161' from departure end of runway, 81' right of centerline, up to 50' AGL/578' MSL. **Rwy 32**, multiple trees beginning 716' from departure end of runway, 488' right of centerline, up to 50' AGL/568' MSL.

31 MAY 2012 to 28 JUN 2012

31 MAY 2012 to 28 JUN 2012

12096



TAKE-OFF MINIMUMS AND (OBSTACLE) DEPARTURE PROCEDURES





TAKE-OFF MINIMUMS AND (OBSTACLE) DEPARTURE PROCEDURES



12096

PERRYTON, TX

PERRYTON OCHILTREE COUNTY (PYX)
ORIG 10154 (FAA)

TAKE-OFF MINIMUMS: **Rwys 4, 22**, NA-
Environmental.

DEPARTURE PROCEDURE: **Rwy 17**, climb
heading 173° to 3400 before turning right.

NOTE: **Rwy 17**, vehicles on road and poles, 500'
from DER, crossing left to right, up to 50'
AGL/2964' MSL. **Rwy 35**, train and poles,
beginning 720' from DER, crossing left to right,
up to 50' AGL/2964' MSL.

PLAINIS, TX

YOAKUM COUNTY (F98)
ORIG 08269 (FAA)

NOTE: **Rwy 3**, tree 948' from departure end of
runway, 725' left of centerline, 50' AGL/3769' MSL.
Rwy 17, vehicle on road 99' from departure end of
runway, 476' right of centerline, 15' AGL/3699'
MSL. **Rwy 35**, vehicle on road 546' from departure
end of runway, 527' left of centerline, 15' AGL/3714'
MSL.

PLAINVIEW, TX

HALE COUNTY (PVVV)
ORIG 12096 (FAA)

TAKE-OFF MINIMUMS: **Rwy 4**, 300-1½ or std. w/
min. climb of 420' per NM to 3700.

NOTE: **Rwy 4**, fuel pump 137' from DER, 368' right
of centerline, 5' AGL/3371' MSL. Building 261'
from DER, 444' right of centerline, 33' AGL/3394'
MSL. Pole 264' from DER, 394' right of centerline,
27' AGL/3388' MSL. Trees beginning 2817' from
DER, 1064' right of centerline, up to 100' AGL/
3454' MSL. Tower 4696' from DER, 1750' left of
centerline, 209' AGL/3558' MSL. Multiple elevators
beginning 6190' from DER, 339' left of centerline,
up to 200' AGL/3555' MSL. **Rwy 13**, trees
beginning 1218' from DER, 530' right of
centerline, up to 100' AGL/3469' MSL. Trees
beginning 2137' from DER, 479' left of centerline,
up to 100' AGL/3469' MSL. **Rwy 22**, multiple trees,
poles and antennas beginning 1121' from DER,
311' left of centerline, up to 100' AGL/3474' MSL.
Rwy 31, pole 1186' from DER, 204' right of
centerline, 35' AGL/3405' MSL. Trees beginning
4035' from DER, 841' left of centerline, up to 100'
AGL/3479' MSL. Trees beginning 4144' from
DER, 1318' right of centerline, up to 100' AGL/
3479' MSL.

ROCKWALL, TX

ROCKWALL MUNI

NOTE: **Rwy 17**, cross departure end of runway at or
above 598' MSL/35' AGL. East-west road at
departure end of runway, 10' AGL/574' MSL. East-
west railroad track 860' from departure end of
runway, 23' AGL/612' MSL. **Rwy 35**, cross
departure end of runway at or above 594' MSL/35'
AGL. Multiple transmission towers from 318' to
467' from departure end of runway, left and right of
centerline, from 60' AGL/590' MSL to 75' AGL/
614' MSL.

SEMINOLE, TX

GAINES COUNTY (GNC)
ORIG 10210 (FAA)

TAKE-OFF MINIMUMS: **Rwy 35**, std. w/min. climb of 612'
per NM to 3600 or 300-1 w/min. climb of 235' per NM to
3900, or 900-3 for climb in visual conditions.

DEPARTURE PROCEDURE: **Rwy 35**, climb heading
350° to 4000 before turning right. For climb in visual
conditions cross Gaines County airport at or above 4100
before proceeding on course.

NOTE: **Rwy 17**, brush beginning 147' from DER 388' right
of centerline, 30' AGL/3280' MSL. Tree 231' from DER,
356' right of centerline, 60' AGL/3293' MSL. House 865'
from DER, 531' left of centerline, 25' AGL/3289' MSL. Pole
1238' from DER, 650' right of centerline, 30' AGL/3297'
MSL. **Rwy 35**, tower 2898' from DER, 1016' left of
centerline, 169' AGL/3440' MSL.

SEYMOUR, TX

SEYMOUR MUNI (60F)
ORIG 12040 (FAA)

NOTE: **Rwy 17**, vehicles on roadway beginning 27' from
DER, left and right of centerline, up to 17' AGL/1356' MSL.
Aircraft on taxiway 36' from DER, 175' left of centerline, up
to 25' AGL/1364' MSL. Buildings beginning 73' from DER,
251' left of centerline, up to 40' AGL/1379' MSL. Trees
beginning 710' from DER, 225' left of centerline, up to 100'
AGL/1459' MSL. **Rwy 35**, vehicles on roadway beginning
35' from DER, 202' left of centerline, up to 17' AGL/1356'
MSL. Trees beginning 421' from DER, 7' right of
centerline, up to 100' AGL/1439' MSL.

**SHEPPARD AFB/WICHITA FALLS MUNI
(KSPS),**

WICHITA FALLS, TX AMDT 1, 11293

DEPARTURE PROCEDURE: **Rwy 15R/15C/15L**,

Climb on track 153° to 2500' before turning
Westbound. **Rwy 17**, Climb heading 160° to 2500',
intercept SPS VORTAC R-120 outbound. Cross SPS
R-120/8 DME (HUNEP) at or below 2500', then climb
and maintain 5000' or higher as assigned. Turn on
course after reaching 3100'. **Rwy 35**, Climb heading
355° to 1500' then proceed on course.

TAKE-OFF OBSTACLES: **Rwy 17**, Light pole
31' AGL/1040' MSL, 837' from DER, 726' left of
centerline. **Rwy 35**, Large frame aircraft parking,
56' AGL/1053' MSL, 337' from DER, 542' left of
centerline. Large frame aircraft parking,
56' AGL/1053' MSL, 451' from DER, 573' left of
centerline.

SHERMAN, TX

SHERMAN MUNI (SWI)
ORIG 11265 (FAA)

TAKE-OFF MINIMUMS: **Rwy 34**, 300-1½ or std. w/min.
climb of 267' per NM to 1100.

DEPARTURE PROCEDURE: climb heading 339° to 1500'
before turning right.

NOTE: **Rwy 16**, trees beginning 20' from DER, 240' right
of centerline, up to 30' AGL/739' MSL. Power lines
beginning 1057' from DER, left to right of centerline, up
to 150' AGL/825' MSL. **Rwy 34**, tower 1.2 NM from
DER, 1026' left of centerline, 164' AGL/938' MSL.

31 MAY 2012 to 28 JUN 2012

31 MAY 2012 to 28 JUN 2012

12096



TAKE-OFF MINIMUMS AND (OBSTACLE) DEPARTURE PROCEDURES





TAKE-OFF MINIMUMS AND (OBSTACLE) DEPARTURE PROCEDURES



12096

SHERMAN/DENISON, TX

NORTH TEXAS RGNL/PERRIN FIELD (GYI)
ORIG 11125 (FAA)

DEPARTURE PROCEDURE: **Rwy 17L**, Climb heading 176° to 1800 before turning right.

NOTE: **Rwy 13**, rising terrain beginning 48' from DER. 202' left of centerline, 745' MSL. Plane on taxiway 521' from DER, 48' left of centerline, up to 55' AGL/804' MSL. Trees beginning 3299' from DER, 519' right of centerline, up to 100' AGL/859' MSL.

Rwy 17L, vehicle on road 123' from DER 446' right of centerline, up to 15' AGL/784' MSL. Pole 1088' from DER, 740' left of centerline, 10' AGL/779' MSL. Rig 3711' from DER, 821' left of centerline, 96' AGL/861' MSL. **Rwy 31**, plane on taxiway 605' from DER, 620' right of centerline, up to 25' AGL/854' MSL. Trees beginning 1791' from DER, 445' left of centerline, up to 100' AGL/819' MSL. **Rwy 35R**, plane on taxiway 242' from DER, 440' right of centerline, up to 25' AGL/764' MSL.

SNYDER, TX

WINSTON FIELD

DEPARTURE PROCEDURE: **Rwy 26**, climb via heading 263° to 3000 prior to turning northbound.

SPEARMAN, TX

MAJOR SAMUEL B CORNELIUS FIELD (E42)
ORIG 09015 (FAA)

TAKE-OFF MINIMUMS: **Rwy 20**, 300-1¼ or std. w/ min. climb of 286' per NM to 3500.

NOTE: **Rwy 20**, vehicle on road 174' from departure end of runway, 496' right of centerline, 15' AGL/3094' MSL. Tower 4330' from departure end of runway, 575' left of centerline, 100' AGL/3228' MSL. Tower 1.26 NM from departure end of runway, 2533' left of centerline, 250' AGL/3355' MSL.

STAMFORD, TX

ARLEDGE FIELD (F56)

ORIG 10042 (FAA)

TAKE-OFF MINIMUMS: **Rwys 8, 13, 26, 31**, NA-Environmental.

NOTE: **Rwy 17**, trees beginning 772' from DER, 532' left of centerline, up to 100' AGL/1659' MSL. Tree 2215' from DER, 966' right of centerline, up to 100' AGL/1659' MSL. **Rwy 35**, tree 3284' from DER, 901' left of centerline, up to 100' AGL/1669' MSL. Trees beginning 1267' from DER, 712' right of centerline, up to 100' AGL/1664' MSL.

STEPHENVILLE, TX

CLARK FIELD MUNI

NOTE: **Rwy 32**, trees beginning 1687' from departure end of runway, 124' right of centerline, 80' AGL/1389' MSL.

STRATFORD, TX

STRATFORD FIELD

TAKE-OFF MINIMUMS: **Rwy 22**, 400-2 or std. with a min. climb of 290' per NM to 4100.

SULPHUR SPRINGS, TX

SULPHUR SPRINGS MUNI (SLR)

AMDT 1 11237 (FAA)

NOTE: **Rwy 1**, tree 1' from DER, 140' left of centerline, 27' AGL/484' MSL. Tree 108' from DER, 265' right of centerline, 13' AGL/470' MSL. **Rwy 19**, trees beginning 82' from DER, 265' right of centerline, up to 100' AGL/609' MSL. Trees beginning 119' from DER, 454' left of centerline, up to 53' AGL/552' MSL. Vehicle on road 492' from DER, 2' left of centerline, 17' AGL/518' MSL. Poles beginning 1155' from DER, 143' left of centerline, up to 40' AGL/536' MSL. Poles beginning 1521' from DER, 158' right of centerline, up to 53' AGL/552' MSL. Tank 1835' from DER, 14' right of centerline, 55' AGL/553' MSL. Chimney 1862' from DER, 172' right of centerline, 48' AGL/544' MSL. Chimneys beginning 1887' from DER, 106' left of centerline, up to 44' AGL/543' MSL.

SWEETWATER, TX

AVENGER FIELD (SWWW)

ORIG 11293 (FAA)

NOTE: **Rwy 4**, multiple trees, poles and vehicles on road beginning 19' from DER, 7' left of centerline, up to 79' AGL/2370' MSL. Multiple trees, poles and vehicles on road beginning 39' from DER, 5' right of centerline, up to 60' AGL/2353' MSL. **Rwy 17**, sign 12' from DER, 250' right of centerline, 2' AGL/2375' MSL. Light 49' from DER, 90' right of centerline, 3' AGL/2372' MSL. Multiple vehicles on road beginning 750' from DER, 8' right of centerline, up to 15' AGL/2390' MSL. Multiple poles and vehicles on road beginning 755' from DER, 1' left of centerline, up to 54' AGL/2407' MSL. Telephone line 943' from DER, 278' left of centerline, 48' AGL/2401' MSL. **Rwy 22**, terrain 49' from DER, 219' right of centerline, 2383' MSL. Multiple trees, poles, and buildings beginning 298' from DER, 261' right of centerline, up to 61' AGL/2420' MSL. **Rwy 35**, multiple trees beginning 14' from DER, 361' left of centerline, up to 27' AGL/2367' MSL. Light 49' from DER, 90' left of centerline, 2' AGL/2342' MSL. Light 50' from DER, 90' right of centerline, 2' AGL/2342' MSL. Multiple trees beginning 70' from DER, 187' right of centerline, up to 60' AGL/2355' MSL.

TERRELL, TX

TERRELL MUNI

TAKE-OFF MINIMUMS: **Rwy 32**, std. with a min. climb of 430' per NM to 800.

NOTE: **Rwy 32**, cross departure end of runway at or above 35' AGL/508' MSL. **Rwy 32**, tower, 3364' from departure end of runway, 1069' left of centerline, 125' AGL/624' MSL.

31 MAY 2012 to 28 JUN 2012

31 MAY 2012 to 28 JUN 2012

12096



TAKE-OFF MINIMUMS AND (OBSTACLE) DEPARTURE PROCEDURES





TAKE-OFF MINIMUMS AND (OBSTACLE) DEPARTURE PROCEDURES



12096

TYLER, TX

TYLER POUNDS RGNL

NOTE: **Rwy 4**, road and vehicle 605' from departure end of runway, 643' left of centerline, 15' AGL/544' MSL. Multiple trees beginning 648' from departure end of runway, 301' right of centerline, up to 74' AGL/576' MSL. **Rwy 13**, road, antenna and multiple trees beginning 607' from departure end of runway, 272' left of centerline, up to 73' AGL/614' MSL. Multiple trees beginning 12' from departure end of runway, 290' right of centerline, up to 73' AGL/581' MSL. **Rwy 17**, tree 970' from departure end of runway, 362' left of centerline, 57' AGL/586' MSL. Tree 1339' from departure end of runway, 207' right of centerline, 69' AGL/578' MSL. **Rwy 22**, multiple trees beginning 166' from departure end of runway, 92' left of centerline, up to 86' AGL/605' MSL. Terrain and multiple trees beginning 28' from departure end of runway, 323' right of centerline, up to 46' AGL/626' MSL. **Rwy 31**, road and multiple trees beginning 326' from departure end of runway, 533' right of centerline, up to 78' AGL/564' MSL. Multiple trees beginning 907' from departure end of runway, 666' left of centerline, up to 67' AGL/556' MSL. **Rwy 35**, road 901' from departure end of runway, on centerline, 15' AGL/544' MSL. Multiple trees and tower beginning 1068' from departure end of runway, 303' right of centerline, up to 73' AGL/574' MSL.

VERNON, TX

WILBARGER COUNTY (F05)

ORIG 10210 (FAA)

NOTE: **Rwy 2**, vehicle on road 401' from DER, 587' right of centerline, up to 15' AGL/1269' MSL. Pole 329' from DER, 525' right of centerline, up to 30' AGL/1284' MSL. Ground 56' from DER, 399' left of centerline, 1258' MSL. **Rwy 20**, vehicle on road 451' from DER, 604' right of centerline, up to 15' AGL/1279' MSL. **Rwy 34**, trees beginning 1178' from DER, 530' right of centerline, up to 60' AGL/1309' MSL. Vehicle on road 472' from DER, 445' left of centerline, up to 15' AGL/1274' MSL.

WEATHERFORD, TX

PARKER COUNTY (WEA)

ORIG 11321 (FAA)

DEPARTURE PROCEDURE: **Rwy 35**, climb heading 355° to 1600 before turning left.

NOTE: **Rwy 17**, trees beginning 430' from DER, left and right of centerline, up to 35' AGL/1016' MSL. Houses beginning 952' from DER, 76' left of centerline, up to 30' AGL/1012' MSL. Utility poles beginning 1958' from DER, 185' right of centerline, up to 55' AGL/1037' MSL. **Rwy 35**, trees beginning 25' from DER, 176' left of centerline, up to 35' AGL/1014' MSL. Vehicle on road 105' from DER, across centerline, 17' AGL/1007' MSL. Sign and pole 193' from DER, 295' right of centerline, 30' AGL/1008' MSL.

WHEELER, TX

WHEELER MUNI (T59)

ORIG 10210 (FAA)

NOTE: **Rwy 17**, hanger 360' from DER, 399' left of centerline, 15' AGL/2504' MSL. Utility pole 593' from DER, 513' right of centerline, 30' AGL/2509' MSL. Utility pole 623' from DER, 507' left of centerline, 30' AGL/2499' MSL. Tree 2656' from DER, 887' right of centerline, 50' AGL/2569' MSL. **Rwy 35**, tree 2267' from DER, 776' right of centerline, 50' AGL/2497' MSL.

WICHITA FALLS, TX

KICKAPOO DOWNTOWN (CWC)

AMDT 2 10294 (FAA)

DEPARTURE PROCEDURE: **Rwy 17**, climb heading 172° to 1700 before proceeding on course. **Rwy 35**, climb heading 352° to 2100 before proceeding on course.

NOTE: **Rwy 17**, numerous light poles, signs, and trees beginning 309' from DER, 473' right of centerline, up to 60' AGL/1056' MSL. Pole 2290' from DER, 397' left of centerline, 58' AGL/1062' MSL. Numerous vehicles on roads beginning 334' from DER, on centerline, up to 17' AGL/1019' MSL. **Rwy 35**, building 123' from DER, 495' right of centerline, 80' AGL/1060' MSL. Vehicles on road, 354' from DER, on centerline, up to 15' AGL/994' MSL. Pole 177' from DER, 313' left of centerline, 33' AGL/1008' MSL.

WICHITA VALLEY (F14)

AMDT 1 10266 (FAA)

TAKE-OFF MINIMUMS: **Rwys 4, 16, 22, 34**, NA-Environmental. **Rwy 13**, Std. w/min. climb of 334' per NM to 2400.

NOTE: **Rwy 13**, vehicle on road 269' from DER, 516' right of centerline, 17' AGL/996' MSL. Trees beginning 385' from DER, 104' right of centerline, up to 100' AGL/1079' MSL. Railroad 445' from DER, 546' right of centerline, 23' AGL/1002' MSL. **Rwy 31**, building 43' from DER, 242' right of centerline, 15' AGL/1019' MSL. Building 165' from DER, 511' left of centerline, 15' AGL/1019' MSL. Vehicle on road 273' from DER, 14' left of centerline, 15' AGL/1015' MSL. Tree 5553' from DER, 651' right of centerline, up to 100' AGL/1149' MSL.

WINNSBORO, TX

WINNSBORO MUNI

DEPARTURE PROCEDURE: **Rwys 1, 19**, climb runway heading to 1000 prior to turn.

31 MAY 2012 to 28 JUN 2012

31 MAY 2012 to 28 JUN 2012

12096



TAKE-OFF MINIMUMS AND (OBSTACLE) DEPARTURE PROCEDURES

