

KEY WEST, FLORIDA

AL-606 (FAA)

# RNAV (GPS) RWY 27

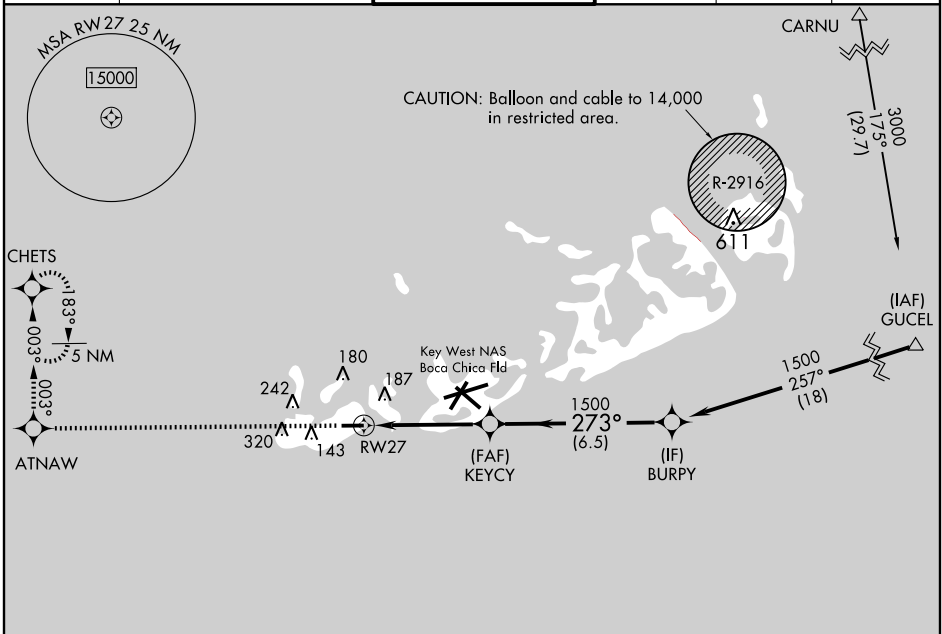
KEY WEST INTL (EYW)

WAAS CH <b>82100</b> <b>W27A</b>	APP CRS <b>273°</b>	Rwy Idg <b>4801</b> TDZE <b>3</b> Apt Elev <b>3</b>
--	------------------------	---

**W** DME/DME RNP-0.3 NA. If local altimeter setting not received, use Key West NAS/Boca Chica Fld altimeter setting.  
**Δ** ASR

MISSED APPROACH: Climb to 2400 direct ATNAW and via 003° track to CHETS and hold.

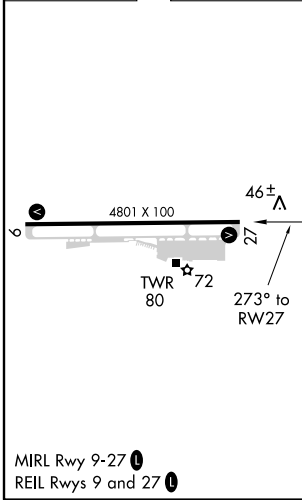
ATIS <b>119.675</b>	NAVY KEY WEST APP CON * <b>124.025 313.7</b>	KEY WEST TOWER * <b>118.2 (CTAF) 257.8</b>	GND CON <b>121.9</b>	CLNC DEL <b>121.9</b>	UNICOM <b>122.95</b>
------------------------	---	---	-------------------------	--------------------------	-------------------------



SE-3, 31 MAY 2012 to 28 JUN 2012

SE-3, 31 MAY 2012 to 28 JUN 2012

ELEV 3	TDZE 3
--------	--------



2400	ATNAW	CHETS	VGSI and RNAV glidepath not coincident (VGSI Angle 3.00/TCH 34).	
↑	☼	003° tr	KEYCY	BURPY Procedure Turn NA
RWY 27		273°	1500	GS 3.00° TCH 45
4.5 NM		6.5 NM		
CATEGORY	A	B	C	D
LPV DA	253-1 250 (300-1)			
LNAV MDA	420-1	417 (500-1)	420-1¼	417 (500-1¼)
CIRCLING	500-1	497 (500-1)	500-1½	620-2
			497 (500-1½)	617 (700-2)

KEY WEST, FLORIDA  
Orig 12096

24°33'N-81°46'W

# KEY WEST INTL (EYW)

## RNAV (GPS) RWY 27