

# RNAV (GPS) RWY 9

KEY WEST INTL (EYW)

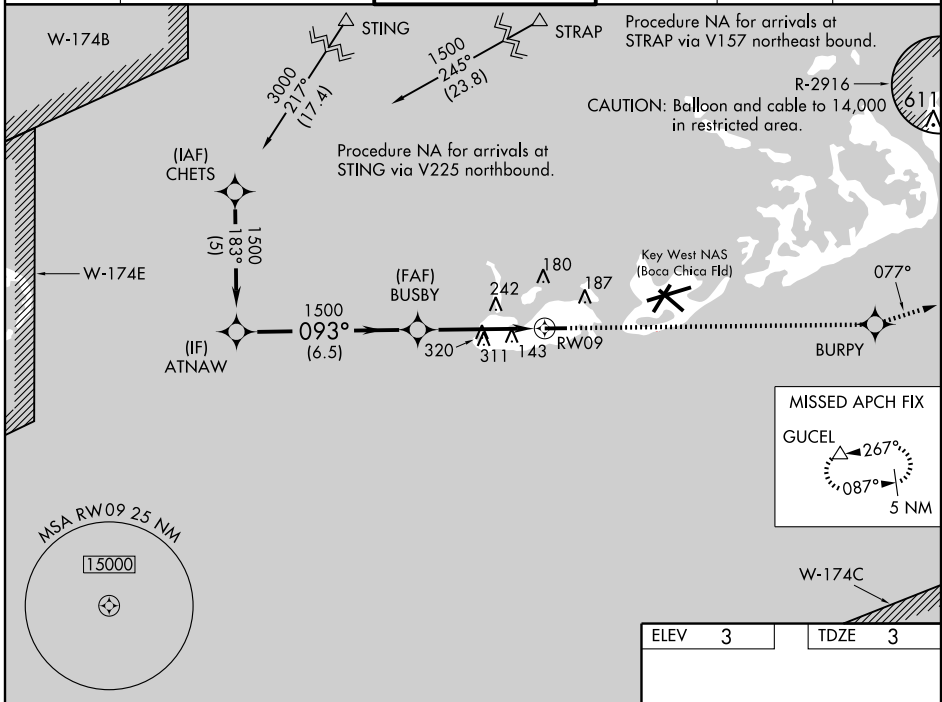
WAAS CH <b>40405</b> <b>W09A</b>	APP CRS <b>093°</b>	Rwy Idg TDZE Apt Elev	<b>4801</b> <b>3</b> <b>3</b>
--	------------------------	-----------------------------	-------------------------------------

**⚠** For uncompensated Baro-VNAV systems, LNAV/VNAV NA below -15°C (5°F) or above 48°C (118°F). DME/DME RNP-0.3 NA. Visibility reduction by helicopters NA. If local altimeter setting not received, use Key West NAS/ Boca Chica Fld altimeter setting.

**W** MISSED APPROACH: Climb to 3000 direct BURPY and via 077° track to GUCEL and hold.

ASR

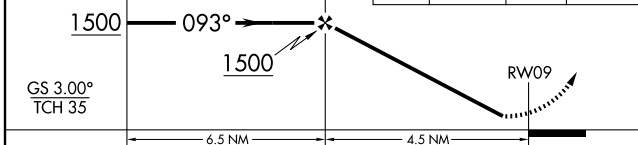
ATIS <b>119.675</b>	NAVY KEY WEST APP CON * <b>124.025 313.7</b>	KEY WEST TOWER * <b>118.2 (CTAF) 0 257.8</b>	GND CON <b>121.9</b>	CLNC DEL <b>121.9</b>	UNICOM <b>122.95</b>
------------------------	---	---	-------------------------	--------------------------	-------------------------



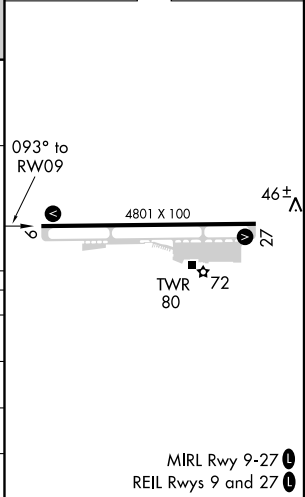
SE-3, 31 MAY 2012 to 28 JUN 2012

SE-3, 31 MAY 2012 to 28 JUN 2012

Procedure Turn NA	ATNAW	BUSBY	3000	BURPY	077° tr	GUCEL
-------------------	-------	-------	------	-------	---------	-------



ELEV 3	TDZE 3
--------	--------



CATEGORY	A	B	C	D
LPV DA	253-1		250 (300-1)	
LNAV/VNAV DA	425-1½		422 (500-1½)	
LNAV MDA	580-1	577 (600-1)	580-1½ 577 (600-1½)	580-1¾ 577 (600-1¾)
CIRCLING	580-1	577 (600-1)	580-1½ 577 (600-1½)	620-2 617 (700-2)