

APP CRS	Rwy Idg	<b>6502</b>
<b>288°</b>	TDZE	<b>10</b>
	Apt Elev	<b>18</b>

# RNAV (RNP) Y RWY 29

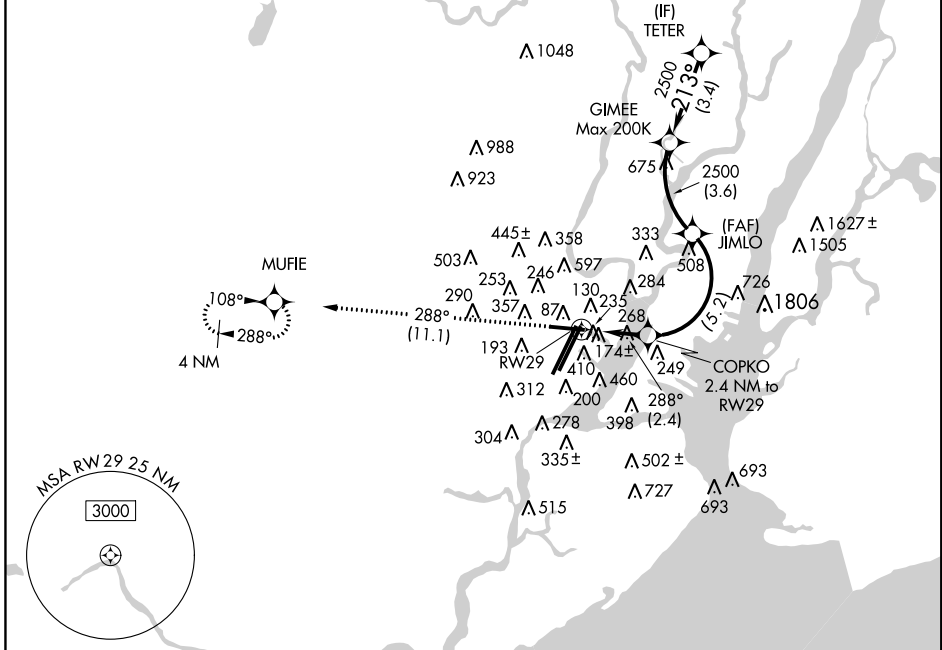
NEWARK LIBERTY INTL (EWR)

**▼** For uncompensated Baro-VNAV systems, procedure NA below -12°C (11°F) or above 54°C (130°F). When VGSI inop, procedure NA at night.  
**▲NA** RF required. GPS required.  
 \*\*Missed approach requires a minimum climb of 417 feet per NM to 800.

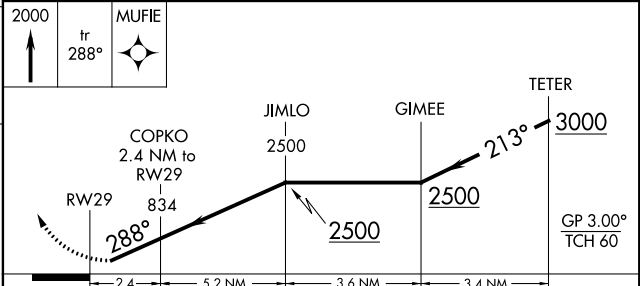
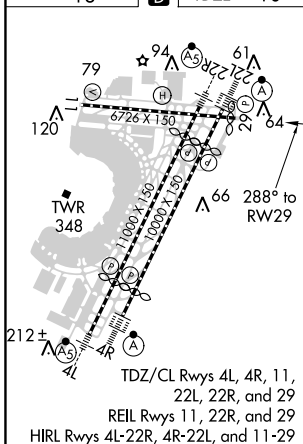
MISSED APPROACH: Climb to 2000 on track 288° to MUFIE and hold.

NEWARK D-ATIS <b>115.7 134.825</b>	NEW YORK APP CON <b>128.55 379.9</b>	NEWARK TOWER <b>118.3 257.6</b>	GND CON <b>121.8</b>	CLNC DEL <b>118.85</b>	CPDLC
---------------------------------------	---	------------------------------------	-------------------------	---------------------------	-------

## RADAR REQUIRED



ELEV 18	<b>D</b>	TDZE 10
---------	----------	---------



CATEGORY	A	B	C	D
RNP 0.16 DA		461-1½	451 (500-1½)	
RNP 0.30 DA		** 530-1¼	520 (600-1¼)	
RNP 0.30 DA		573-1⅞	563 (600-1⅞)	

## AUTHORIZATION REQUIRED

NE-2, 14 SEP 2017 to 12 OCT 2017

NE-2, 14 SEP 2017 to 12 OCT 2017