

NEOSHO, MISSOURI

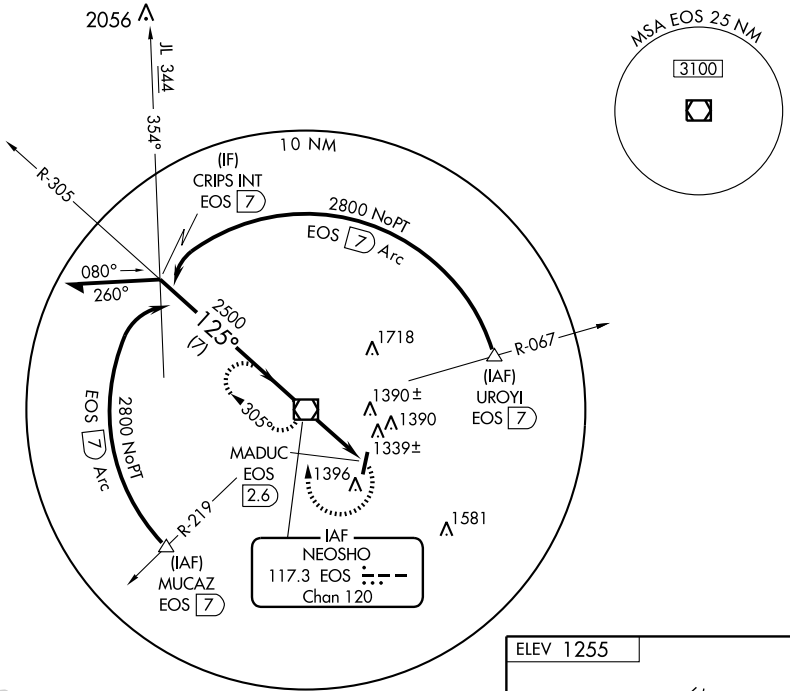
AL-5610 (FAA)

VOR/DME EOS 117.3 Chan 120	APP CRS 125°	Rwy Idg TDZE Apt Elev 1255	N/A N/A 1255
--	------------------------	--	---

VOR-A
NEOSHO HUGH ROBINSON (EOS)

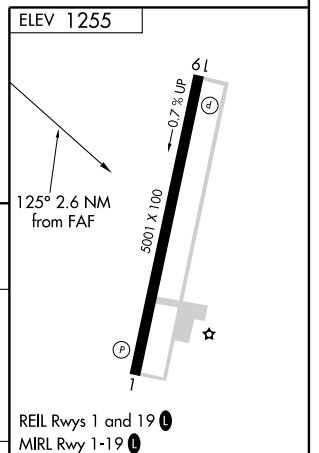
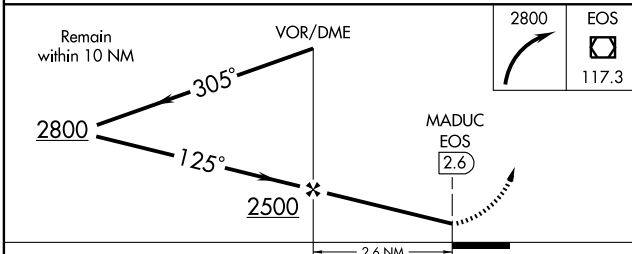
NA When local altimeter setting not received, use Joplin altimeter setting and increase all MDA 20 feet. MISSED APPROACH: Climbing right turn to 2800 direct EOS VOR/DME and hold.

KANSAS CITY CENTER **128.6 282.325** UNICOM **122.8 (CTAF)**



NC-3, 31 MAY 2012 to 28 JUN 2012

NC-3, 31 MAY 2012 to 28 JUN 2012



CATEGORY	A	B	C	D	FAF to MAP 2.6 NM					
CIRCLING	1780-1	525 (600-1)	1820-1½ 565 (600-1½)	NA	Knots	60	90	120	150	180
					Min:Sec	2:36	1:44	1:18	1:02	0:52

NEOSHO, MISSOURI
Amdt 7A 10154

36°49'N-94°24'W

NEOSHO HUGH ROBINSON (EOS)
VOR-A