

WAAS CH 57927 W12A	APP CRS 118°	Rwy Idg THRE Apt Elev 4268 2606 2615
----------------------------------------	------------------------	--------------------------------------------------------------------------

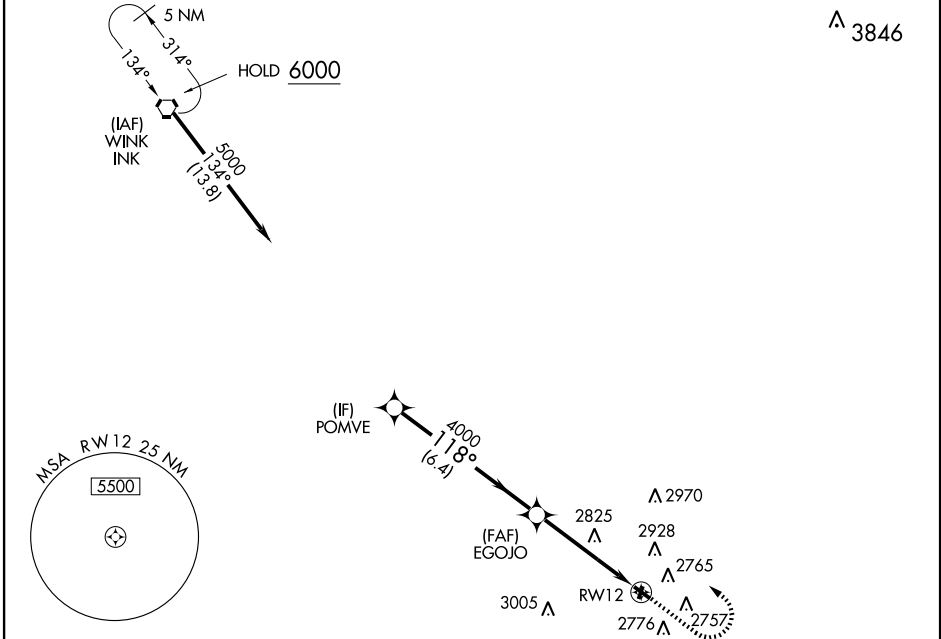
RNAV (GPS) RWY 12

MONAHANS/ROY HURD MEMORIAL (E01)

When VGSI inop, Straight-in/Circling RWY 12 procedure NA at night. DME/DME RNP-0.3. Visibility reduction by helicopters NA. Obtain local altimeter setting on CTAF; when not received, use Wink altimeter setting.

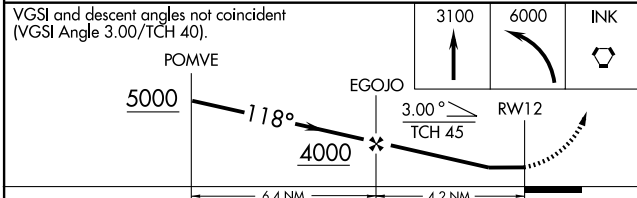
MISSED APPROACH: Climb to 3200 then climbing left turn to 6000 direct INK VORTAC and hold.

FORT WORTH CENTER 133.1 298.95	UNICOM 122.8 (CTAF)
------------------------------------------	-------------------------------



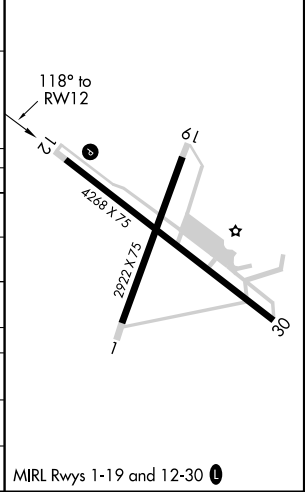
SC-3, 31 MAY 2012 to 28 JUN 2012

SC-3, 31 MAY 2012 to 28 JUN 2012



ELEV 2615	THRE 2606
-----------	-----------

CATEGORY	A	B	C	D
LP MDA	3100-1	494 (500-1)	3100-1 ³ / ₈ 494 (500-1 ³ / ₈)	NA
LNAV MDA	3120-1	514 (600-1)	3120-1 ³ / ₈ 514 (600-1 ³ / ₈)	NA
CIRCLING	3280-1	665 (700-1)	3280-1 ³ / ₄ 665 (700-1 ³ / ₄)	NA
WINK ALTIMETER SETTING MINIMUMS				
LP MDA	3180-1	574 (600-1)	3180-1 ⁵ / ₈ 574 (600-1 ⁵ / ₈)	NA
LNAV MDA	3200-1	594 (600-1)	3200-1 ³ / ₄ 594 (600-1 ³ / ₄)	NA
CIRCLING	3360-1	745 (800-1)	3360-2 ¹ / ₄ 745 (800-2 ¹ / ₄)	NA



MIRL Rwy's 1-19 and 12-30

WAAS CH 78027 W30A	APP CRS 298°	Rwy Idg THRE Apt Elev 4268 2610 2615
----------------------------------------	------------------------	--------------------------------------------------------------------------

RNAV (GPS) RWY 30

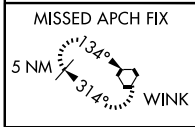
MONAHANS/ROY HURD MEMORIAL (E01)

⚠ When VGSI inop, Circling Rwy 12 NA at night.
⚠ DME/DME RNP-0.3 NA. Visibility reduction by helicopters NA. VDP NA with WINK altimeter setting. Obtain local altimeter setting on CTAF, when not received, use WINK altimeter setting.

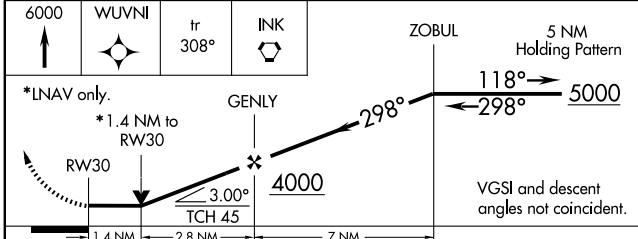
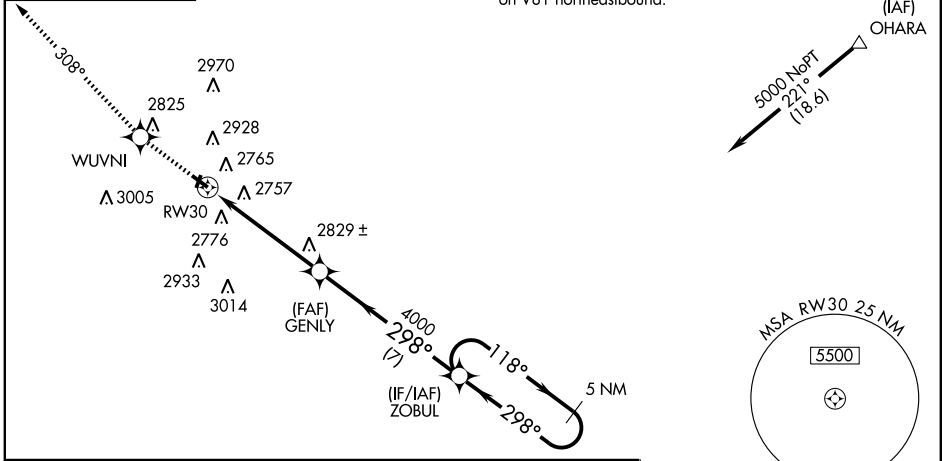
MISSED APPROACH: Climb to 6000 direct WUVNI and on track 308 to INK VORTAC and hold.

FORT WORTH CENTER
133.1 298.95

UNICOM
122.8 (CTAF)

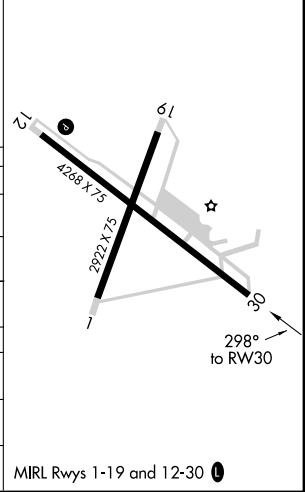


Procedure NA for arrivals at OHARA on V81 northeastbound.



ELEV 2615	THRE 2610
-----------	-----------

CATEGORY	A	B	C	D
LP MDA	3080-1	470 (500-1)	3080-1 ³ / ₈ 470 (500-1 ³ / ₈)	NA
LNAV MDA	3100-1	490 (500-1)	3100-1 ³ / ₈ 490 (500-1 ³ / ₈)	NA
CIRCLING	3280-1	665 (700-1)	3280-1 ³ / ₄ 665 (700-1 ³ / ₄)	NA
WINK ALTIMETER SETTING MINIMUMS				
LP MDA	3160-1	550 (600-1)	3160-1 ⁵ / ₈ 550 (600-1 ⁵ / ₈)	NA
LNAV MDA	3180-1	570 (600-1)	3180-1 ⁵ / ₈ 570 (600-1 ⁵ / ₈)	NA
CIRCLING	3360-1	745 (800-1)	3360-2 ¹ / ₄ 745 (800-2 ¹ / ₄)	NA



SC-3, 31 MAY 2012 to 28 JUN 2012

SC-3, 31 MAY 2012 to 28 JUN 2012

VORTAC INK 112.1 Chan 58	APP CRS 125°	Rwy Idg THRE 4268 2606 Apt Elev 2615
----------------------------------------------	------------------------	-------------------------------------------------------------

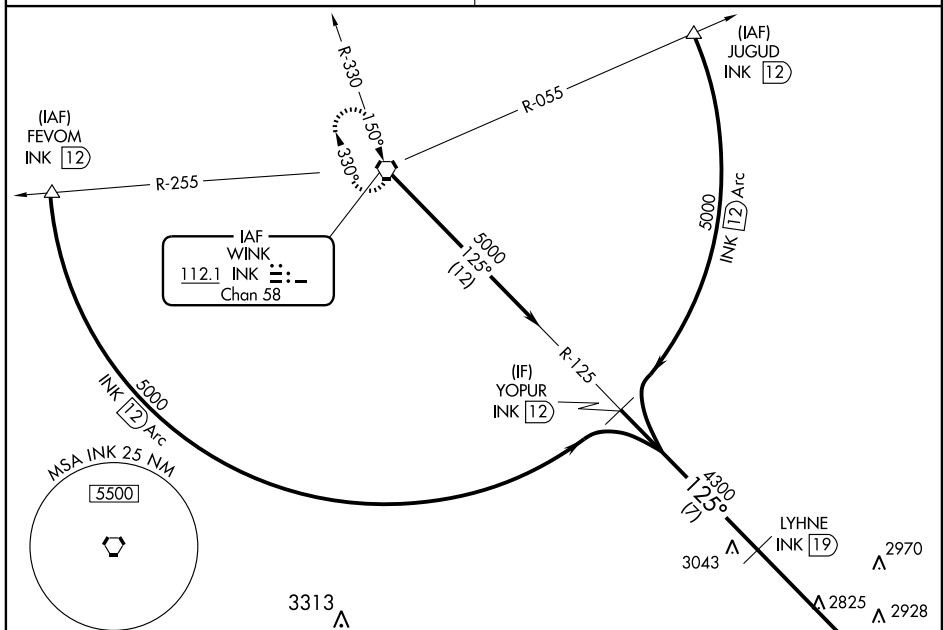
VOR/DME RWY 12
MONAHANS/ROY HURD MEMORIAL (E01)

Obtain local altimeter setting on CTAF; when not received, use Wink altimeter setting. When VGSI inop, Straight-in/Circling Rwy 12 procedure NA at night. Visibility reduction by helicopters NA.

MISSED APPROACH: Climbing right turn to 5000 direct INK VORTAC and hold.

FORT WORTH CENTER
133.1 298.95

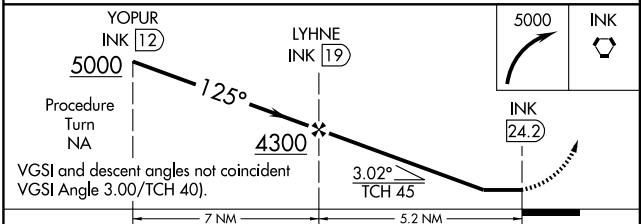
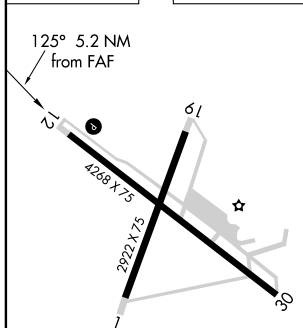
UNICOM
122.8 (CTAF)



SC-3, 31 MAY 2012 to 28 JUN 2012

SC-3, 31 MAY 2012 to 28 JUN 2012

ELEV 2615	THRE 2606
-----------	-----------



CATEGORY	A	B	C	D
S-12	3340-1 734 (800-1)	3340-1¼ 734 (800-1¼)	3340-2 734 (800-2)	NA
CIRCLING	3340-1 725 (800-1)	3340-1¼ 725 (800-1¼)	3340-2 725 (800-2)	NA
WINK ALTIMETER SETTING MINIMUMS				
S-12	3420-1 814 (900-1)	3420-1¼ 814 (900-1¼)	3420-2 ½ 814 (900-2 ½)	NA
CIRCLING	3420-1 805 (900-1)	3420-1¼ 805 (900-1¼)	3420-2 ½ 805 (900-2 ½)	NA