

DEL RIO, TEXAS

AL-5268 (FAA)

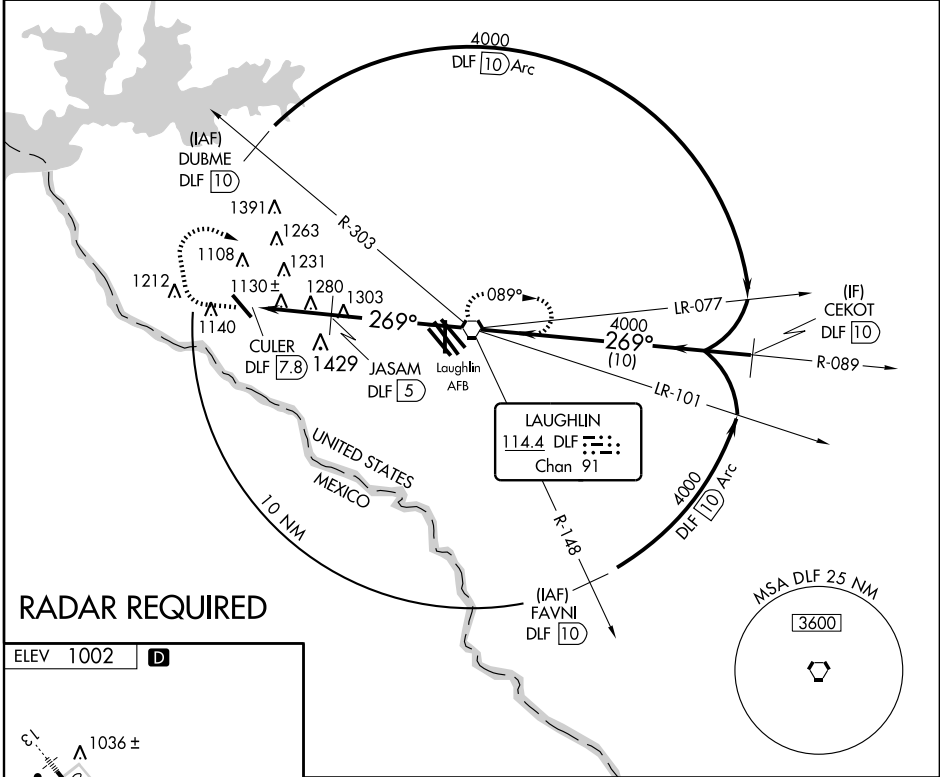
VORTAC DLF 114.4 Chan 91	APP CRS 269°	Rwy Idg TDZE Apt Elev	N/A N/A 1002
----------------------------------------------	------------------------	-----------------------------	---------------------------

VOR/DME-B
DEL RIO INTL (DRT)

▼ Circling NA for Cat D SW of Rwy 13-31. If local altimeter setting not received, use Laughlin AFB altimeter setting and increase all MDAs 40 feet.

▲ MISSED APPROACH: Climbing right turn to 4000 via heading 340° then right turn direct DLF VORTAC and hold.

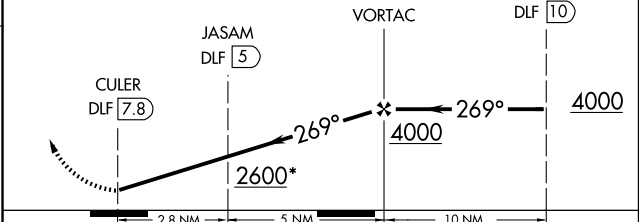
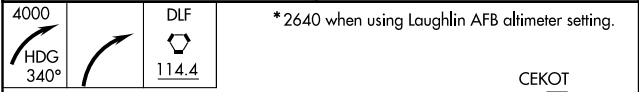
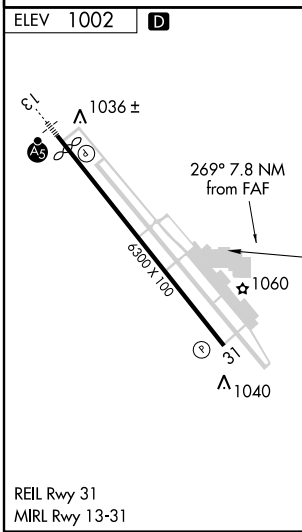
ASOS 118.525	DEL RIO APP CON* 119.6 259.1	CLNC DEL 120.5	UNICOM 122.8 (CTAF) 0
------------------------	----------------------------------------	--------------------------	----------------------------------------



SC-3, 31 MAY 2012 to 28 JUN 2012

SC-3, 31 MAY 2012 to 28 JUN 2012

RADAR REQUIRED



CATEGORY	A	B	C	D
CIRCLING	1580-1	578 (600-1)	1580-1½ 578 (600-1½)	1640-2 638 (700-2)

DEL RIO, TEXAS
Amdt 1 10210

29°22' N- 100°56' W

DEL RIO INTL (DRT)
VOR/DME-B